

**COUNTY OF LOS ANGELES**  
**ROAD DEPARTMENT**

**PRECISE**  
**BENCH MARK LIST**



**LANCASTER QUAD**

**1975 ADJUSTMENT**

**+ PARTIAL 1977 ADJUSTMENT**

## NOTE !

In lieu of a complete readjustment of this Quad in 1977, alterations were applied to 1975 elevations in high subsidence pockets. These changes are reflected by the "As and Ds" following the bench numbers i.e. CL 2240 A and CL 2241 D. The "A" benches are compatible with the 1975 adjustment of the unlettered benches and the "D" benches. The "D" benches are compatible with the closest "A" bench and other "D" benches but not the unlettered benches.

## P R E F A C E

The Road Department level net is composed of more than 2,000 miles of levels supporting in excess of 12,000 bench marks. In 1975, a major readjustment of the net was undertaken. To emphasize the complete break with previous elevations, the BY, BG & BL series bench marks have been relabeled CY, CG & CL, respectively.

To facilitate the adjustment, indexing, and distribution of adjusted values of the net, the County territory is divided into 34 quads or areas. For identification purposes each quad is given a name, viz., "Rosemead," "La Mirada," "Santa Fe," etc. When bench marks and elevations in the Road Department net are used, the name of the quad in which the bench mark is located and the date of the adjustment of the elevation must be included in the bench mark description, e.g.,

CG 6234 --L&BN IN CONC HDWL OF DRAIN PIPE UNDER DR 218 FT  
NE&18 FT SE C/L INT GRAND AVE & CAMERON AVE MKD (BM)  
(COVINA -1975) ELEV. 696.238

Experience indicates that this general adjustment will, for the most part, remain sound for the next 10 years. Updating constrained adjustments will be made in 5 years. It is expected that these updating adjustments will be in the nature of a few hundredths of a foot. When a quad is readjusted, new elevation lists will be published and the date of the readjustment will replace the "1975" at the end of the bench mark description. Two bench marks with different adjustment dates will not normally agree with each other.

The basic accuracy of the net is reflected by an indicated field probable error of plus or minus 0.012 foot per mile of leveling as determined from over 600 conditions of closure. However, many years experience in vertical control in the greater Los Angeles basin and Antelope Valley indicate that because of varying degrees of subsidence and heaving, the true datum is recovered only by obtaining substantial agreement of a number of bench marks.

The users of this net are invited to assist in its maintenance by notifying this Department of cases of obliteration, apparent mistakes in descriptions or elevations, and proven disturbance of bench marks.

---

DATUM: U. S. Coast and Geodetic Survey Sea Level Datum  
of 1929, through the medium of the Los Angeles  
County Engineer Precise Level Net.

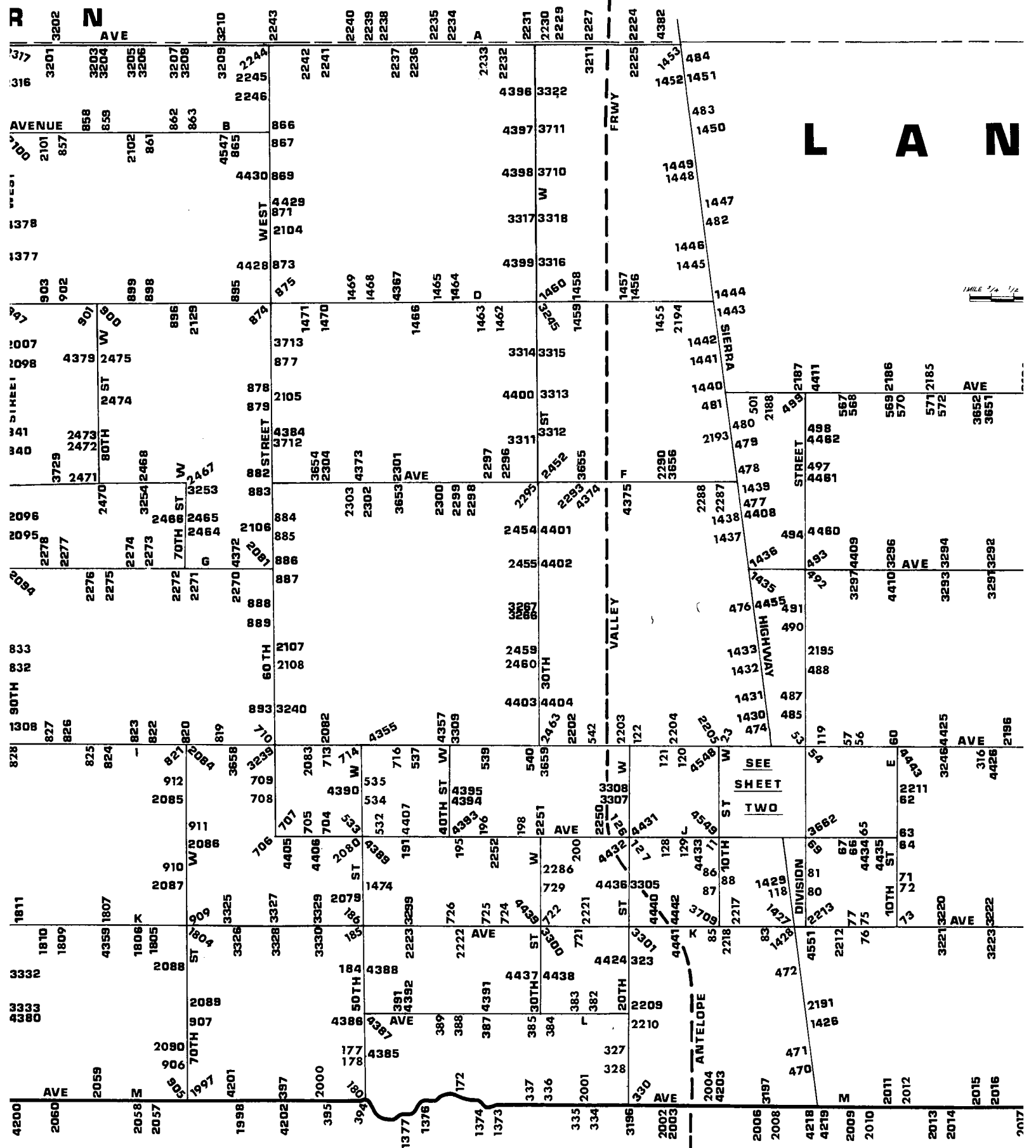
ABBREVIATIONS USED IN BENCH MARK LISTINGS

ABUT - - - - -	Abutment	EC - - - - -	End of Curve
ALG - - - - -	Along	ENT - - - - -	Entrance
ANG PT - - - - -	Angle Point	FL - - - - -	Floor
B/W - - - - -	Back of Walk	FTG - - - - -	Footing
BCR - - - - -	Beginning of Curb Return	FRWY - - - - -	Freeway
BC - - - - -	Beginning of Curve	F/W - - - - -	Front of Walk
BLDG - - - - -	Building	GAR - - - - -	Garage
EM - - - - -	Bench Mark	HDWL - - - - -	Headwall
BT SPK - - - - -	Boat or Bolt Spike	HSE - - - - -	House
BR CAP - - - - -	Brass or Bronze Cap	HWY - - - - -	Highway
C B - - - - -	Catch Basin	INT - - - - -	Intersection
CTR - - - - -	Center	IP - - - - -	Iron Pipe
C/L - - - - -	Center Line	LT - - - - -	Left
C/L INT - - - - -	Center Line Intersection	LACE - - - - -	L. A. City Engineer
C/L PROD - - - - -	Center Line Produced	LACS - - - - -	L. A. Co. Engineer
CONC - - - - -	Concrete	LAFC - - - - -	L. A. Co. Flood Control
COR - - - - -	Corner	L&BN - - - - -	Lead and Bench Nail
COE - - - - -	Corps of Engineers	L&BR - - - - -	Lead and Brad
CULV - - - - -	Culvert	L&N - - - - -	Lead and Nail
CYN - - - - -	Canyon	L&SPK - - - - -	Lead and Spike
CB - - - - -	Curb	L&T - - - - -	Lead and Tack
CS MON - - - - -	Co. Engineer Monument	MCR - - - - -	Middle of Curb Return
CT SPK - - - - -	Cut Spike	MKD - - - - -	Marked
DR - - - - -	Drive or Driveway	MC - - - - -	Middle of Curve
E/O - - - - -	East of	MON - - - - -	Monument
ECR - - - - -	End of Curb Return	N/O - - - - -	North of

ABBREVIATIONS USED IN BENCH MARK LISTINGS . . . CONTINUED

NR - - - - - Near  
OPP - - - - - Opposite  
PI - - - - - Point of Intersection  
PK&W - - - - - PK Nail and Washer  
P/L - - - - - Property Line  
POST - - - - - Point on Semi-Tangent  
PP - - - - - Power Pole  
PVMT - - - - - Pavement  
PROD - - - - - Produced  
RD - - - - - Road  
RDEM - - - - - Road Dept. Bench Mark  
RDEM TAG - - - - - Road Dept. Bench Mark Tag  
RR - - - - - Railroad  
RT - - - - - Right  
R/W - - - - - Right of Way  
SDMH - - - - - Storm Drain Manhole  
SMH - - - - - Sewer Manhole  
SPK - - - - - Spike  
ST&W - - - - - Spike Tin and Washer  
S/O - - - - - South of  
TP - - - - - Telephone Pole  
USC&GS - - - - - U. S. Coast and Geodetic Survey  
USGS - - - - - U. S. Geological Survey  
WK - - - - - Walk  
W/O - - - - - West of





L M D A L E

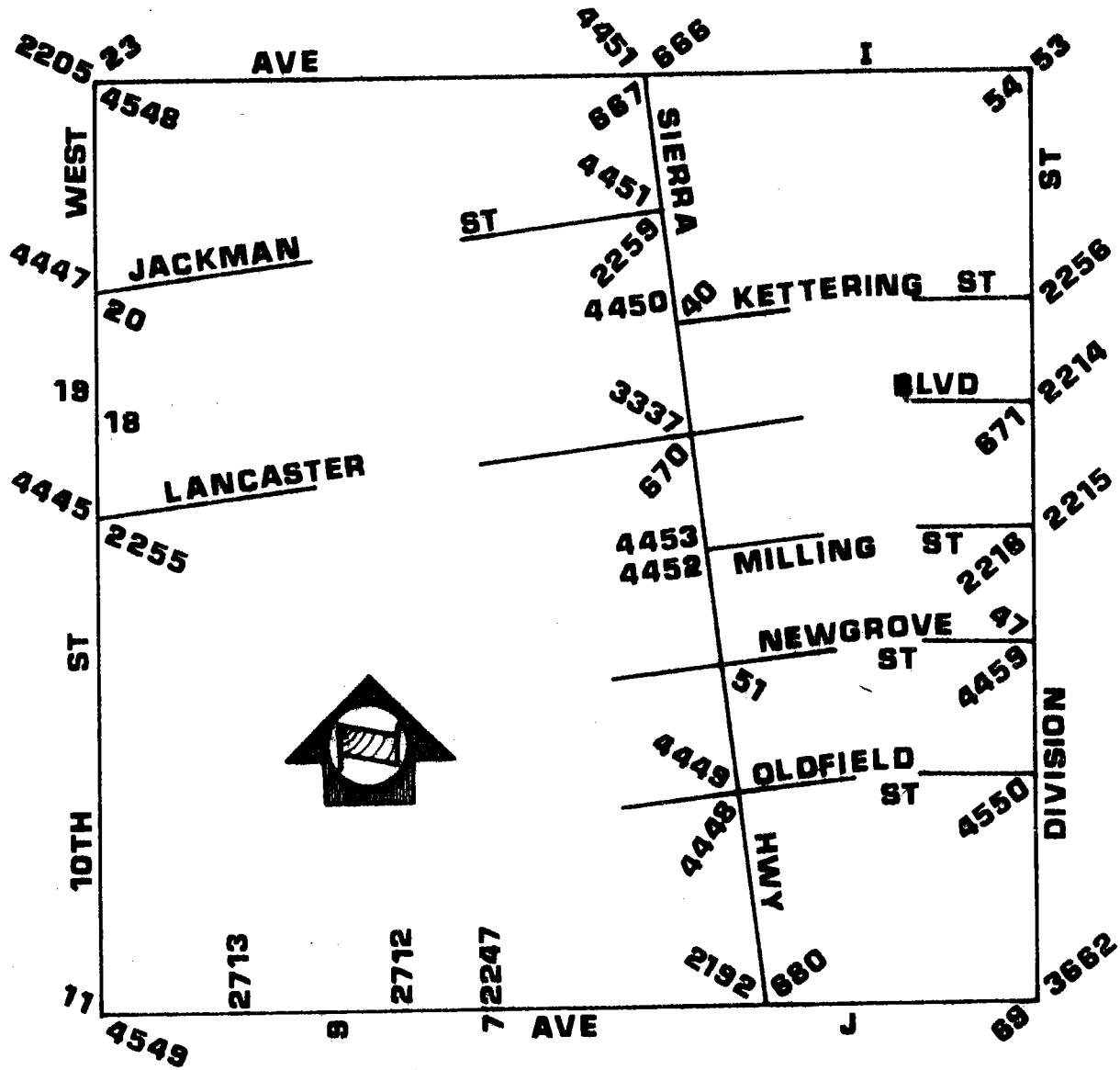






# LANCASTER (SHEET 2)

QUAD  
1-20-78



QUAD-YEAR	ELEV	DESCRIPTION (INCLUDE QUAD AND YEAR IN DESCRIPTION)	BM NUMBER
LANCASTR (1975)	2368.179	L&BN W CB 1FT N BCR @ NW COR ELM AVE & AVE J 18FT W & 66FT N C/L INT	CL 70
LANCASTR (1975)	2366.509	WLY L&T S CB AVE J 60FT S C/L ON C/L PROD FERN AVE IN FRONT OF PARK VIEW SCHOOL	CL 90
LANCASTR (1975)	2359.807	L&BN MCR SW COR AVE J & TENTH ST W 57FT S & 50FT W C/L INT	CL 110
LANCASTR (1975)	2337.052	L&BN W CB 10TH ST W 28FT W C/L 3FT N OF S P/L BLDG 44913 & 570FT S JACKMAN ST 3FT N PP 271449E	CL 180
LANCASTR (1975)	2336.330	L&BN E CB 10TH ST W 28FT E C/L & 86FT N OF N EDGE DRWY BLDG 44902 480FT S JACKMAN ST	CL 190
LANCASTR (1975)	2334.590	L&T IN CB RET 10FT N BCR @ SW COR 10TH ST W & JACKMAN ST 33FT S & 30FT W C/L INT	CL 200
LANCASTR (1975)	2329.113	L&T MCR @ NW COR AVE I & 10TH ST W 50FT N & 39FT W C/L INT	CL 23
LANCASTR (1975)	2345.363	L&BRAD E CB SIERRA HWY 30FT E C/L & 25FT N C/L KETTERING ST	CL 400
LANCASTR (1975)	2363.349	CS MON IN WELL 21IN DN @ C/L INT DIVISION ST & NEWGROVE ST MKD (CO SUR RE 2177) W EDGE	CL 470
LANCASTR (1975)	2361.363	L&BN E CB SIERRA HWY 25FT E C/L & 115FT S C/L PROD NEWGROVE ST 16FT S OF END CB	CL 510
LANCASTR (1975)	2343.406	L&T NR MCR NW COR AVE I & DIVISION ST 42FT N & 43FT W/O C/L INT	CL 530
LANCASTR (1975)	2343.465	L&T NR MCR SW COR AVE I & DIVISION ST 42FT S & 44FT W/O C/L INT	CL 540
LANCASTR (1975)	2352.944	CSBM MON IN CONC FLUSH 1FT N OF N CB & 19FT W BCR @ NW COR 5TH ST E & AVE I 41FT N & 82FT W C/L INT MKD (BM 105-20 1958)	CL 560
LANCASTR (1975)	2352.790	L&T N CB 3FT W/O BCR 40FT N & 66FT W/O C/L INT AVE I & 5TH ST E	CL 570
LANCASTR (1975)	2359.950	USC&GS BR CAP 78FT W & 40FT S C/L INT AVE I & 10TH ST E MKD (Y 488 RESET 1961)	CL 600
LANCASTR (1975)	2380.492	L&T W EDGE OF CONC GARAGE APRON TO HSE NO 1016 LANCASTER BLVD 49FT S C/L & 145 FT E C/L 10TH ST E	CL 620
LANCASTR (1975)	2397.226	L&T NR MCR @ SW COR 10TH ST E & AVE J 48FT W & 45FT S C/L INT	CL 630

QUAD-YEAR	ELEV	DESCRIPTION (INCLUDE QUAD AND YEAR IN DESCRIPTION)	BM	NUMBER
LANCASTR (1975)	2396.157	CS MON IN WELL 18IN DN @ C/L INT AVE J & 10TH ST E MKD (CO SUR 14 13 23 24 T7N R12W RE 5869) USE E EDGE	CL	64C
LANCASTR (1975)	2390.898	CS MON IN WELL 10IN DN @ C/L INT AVE J & 5TH ST E MKD (1/4 COR 14 23 T7N R12W RE 5869) USE E EDGE	CL	65C
LANCASTR (1975)	2384.174	L&BN @ MCR SE COR 4TH ST E & AVE J 80FT S & 24FT E C/L INT	CL	66D
LANCASTR (1975)	2383.263	L&BN @ MCR SE COR KIRKLAND AVE & AVE J 75FT S & 27FT E C/L INT	CL	67D
LANCASTR (1975)	2379.652	CS MON IN WELL 14IN DN @ C/L INT AVE J & DIVISION ST MKD (CO SUR 15 14 22 23 T7N R12W 1927) USE N EDGE	CL	69D
LANCASTR (1975)	2413.174	L&T E SIDE 36IN STANDPIPE 215FT W C/L 10TH ST E & 5FT N C/L AVE J-8 263FT NW PP 917614E	CL	71D
LANCASTR (1975)	2413.813	CS MON IN WELL 8IN DN @ C/L INT 10TH ST E & AVE J-8 0.5 MI S AVE J MKD (T7N, R12W 1/4 COR, 23-24) (W EDGE)	CL	72D
LANCASTR (1975)	2434.427	CS MON IN WELL 15IN DN @ C/L INT 10TH ST E & AVE K MKD (CO SUR 23 24 25 26 T7N R12W) N EDGE	CL	73
LANCASTR (1975)	2425.754	CS MON IN WELL 9IN DN @ C/L INT AVE K & 6TH ST E MKD (RE 5869) W EDGE	CL	75
LANCASTR (1975)	2426.371	CS MON IN CONC POST 3IN UP 40FT S & 55FT W C/L INT AVE K & 6TH ST E MKD (BM 105-9 1958)	CL	76
LANCASTR (1975)	2425.307	CHIS X IN TOP OF BOLT ON W SIDE OF FIRE HYDRANT BASE 24FT S & 40FT W C/L INT AVE K & 5TH ST E 135FT W DRWY TO HSE 504	CL	77
LANCASTR (1975)	2400.281	L&BN @ MCR @ NE COR DIVISION ST & AVE J-8 28FT N & 41FT E C/L INT	CL	80D
LANCASTR (1975)	2399.047	L&BN @ MCR SE COR DIVISION ST & AVE J-7 36FT S & 35FT E C/L INT	CL	81D
LANCASTR (1975)	2413.834	CS MON IN WELL 18IN DN @ C/L INT AVE K & 5TH ST W MKD (CO SUR 1/4 SEC COR 22 27 T7N R12W) N SIDE	CL	83
LANCASTR (1975)	2405.153	L&BN @ NE COR OF SO CAL GAS CO VALVE BOX 44FT N C/L AVE K & 115FT W C/L 10TH ST W	CL	85

QUAD-YEAR	ELEV	DESCRIPTION (INCLUDE QUAD AND YEAR IN DESCRIPTION)	BM NUMBER
LANCASTR (1975)	2380.407	CS MON IN WELL 14IN DN @ C/L INT 10TH ST W & AVE J-8 MKD (CO SUR 1/4 SEC COR 21 22 T7N R12W) W EDGE	CL 86
LANCASTR (1975)	2380.657	L&T 1FT N BCR @ NE COR 10TH ST W & AVE J-8 51FT N & 30FT E C/L INT	CL 87A
LANCASTR (1975)	2376.887	L&T S CB AVE J-6 1FT E BCR @ SE COR 10TH ST W & AVE J-6 18FT S & 65FT E C/L INT	CL 88D
LANCASTR (1975)	2397.101	USC&GS DISK IN CONC 6IN DN 60FT E & 125FT S C/L INT SIERRA HWY & AVE J-8 MKD (S 811 1947 RESET 1955)	CL 118D
LANCASTR (1975)	2345.488	USC &GS BRASS DISC FLUSH 16FT W & 41FT N/O C/L INT AVE I & 2ND ST E MKD ( X-488 1955)	CL 119D
LANCASTR (1975)	2323.798	L&T IN N SERVICE ROAD CB @ NE COR AVE I & 15TH ST W 51FT E & 80FT N C/L INT	CL 120D
LANCASTR (1975)	2324.033	RDBM TAG IN S SERVICE ROAD CB @ SW COR AVE I & 15TH ST W 51FT W & 80FT S C/L INT	CL 121D
LANCASTR (1975)	2321.613	CS MON 5IN UP @ NE COR AVE I & 20TH ST W 40FT N & 66FT E C/L INT MKD (BM 102-3 1957)	CL 122D
LANCASTR (1975)	2349.332	RDBM TAG 6FT W BCR @ SW COR AVE J & 15TH ST W 66FT W & 30FT S C/L INT	CL 128D
LANCASTR (1975)	2350.082	RDBM TAG 40FT S BCR @ SE COR AVE J & 15TH ST W 100FT S & 30FT E C/L INT	CL 129D
BASELINE (1973)	2494.020	USC&GS DISK IN CONC POST 92FT N & 65FT W C/L INT AVE M & 40TH ST W MKD (F 489 1955)	CL 172
LANCASTR (1975)	2461.796	L&T NE COR CONC SLAB 100FT W & 66FT S C/L INT 50TH ST W & AVE L-8	CL 177
LANCASTR (1975)	2477.842	L&T CONC WLK IN FR OF CHURCH 45FT N & 65FT W C/L INT 50TH ST W & AVE L-12	CL 178
BASELINE (1973)	2495.190	L&T IN CONC SLAB 1.5FT S/O SW COR PORCH HSE NO. 42002, 50TH ST W 48FT N & 66FT E/O C/L INT 50TH ST W & AVE M	CL 180
LANCASTR (1975)	2410.012	CS MON (E EDGE) IN WELL 18IN DN @ C/L INT 50TH ST W & AVE K-8 MKD (CO SUR 1/4 COR 25, 26, T7N R13W, 1928)	CL 184
LANCASTR (1975)	2379.924	CS MON (W EDGE) IN WELL 16 IN DN @ C/L INT 50 TH ST W & AVE K MKD (CO SUR 23, 24, 25, 26, T7N, R13W, 1927)	CL 185

QUAD-YEAR	ELEV	DESCRIPTION (INCLUDE QUAD AND YEAR IN DESCRIPTION)	BM NUMBER
LANCASTR (1975)	2382.150	L&T NW COR CONC PORCH HSE NO 4849 AVE K 115FT E & 120FT N C/L INT AVE K & 50TH ST W	CL 186
LANCASTR (1975)	2350.167	RDBM TAG S SIDE WIER BOX 97FT E & 85FT N C/L INT AVE J & 45TH ST W (TO THE N)	CL 191
LANCASTR (1975)	2343.517	CS MON IN WELL 13IN DN @ C/L INT AVE J & 40TH ST W MKD (T7N R12 W R13W 13 18 24 19 RE 5869) USE N EDGE	CL 195
LANCASTR (1975)	2340.999	L&T CONC WALK IN FRONT OF CHURCH @ NE COR AVE J & 35TH ST W 130FT N & 170FT E C/L INT MKD (BM)	CL 196
LANCASTR (1975)	2341.550	L&T IN SE COR CONC PORCH TO HSE NO 3129 W AVE J 75FT N & 895FT W/O C/L INT 30TH ST W	CL 198
LANCASTR (1975)	2338.217	CS MON IN WELL 21IN DN @ C/L INT AVE J & 25TH ST W MKD (CO SUR 1/4 SEC COR 17 20 T7N R12W) N EDGE	CL 200
LANCASTR (1975)	2441.061	CS MON IN WELL 15IN DN @ C/L INT 90TH ST E & AVE J MKD (CO SURV 18 17 19 20 T7N R10W 1926) USE S EDGE	CL 271D
LANCASTR (1975)	2423.929	CS MON IN WELL 20IN DN @ C/L INT 90TH ST E & AVE I-8 MKD (CO SURV 1/4 SEC COR 17 18 T7N R10W) USE S EDGE	CL 274D
LANCASTR (1975)	2411.406	CSMON IN WELL 12IN DN @ C/L INT 90TH ST E & AVE I MKD (CO SURV 7 8 17 18 T7N R10W) USE N EDGE	CL 278D
LANCASTR (1975)	2399.233	CS BM MON 2IN UP 39FT S & 70FT W C/L INT AVE I & 70ST E MKD ( BM 107-30 1961)	CL 283D
LANCASTR (1975)	2409.743	CS MON IN CONC SQ 2IN UP 1FT N TP NO K3143Y 30FT N C/L AVE I & 27FT W C/L PROP 85TH ST E MKD (BM 107-27 1961)	CL 284D
LANCASTR (1975)	2412.208	CS MON 2FT S PP NO 991781E 30FT S C/L AVE I & 47FT W C/L 80TH ST E MKD (BM 107-28 1961)	CL 285D
LANCASTR (1975)	2392.965	RDBM TAG @ CTR OF OLD CONC BASE OF MTR MOUNT 40FT W C/L 90TH ST E & 100FT N C/L AVE H	CL 287D
LANCASTR (1975)	2409.501	RDBM TAG @ SE COR CONC SLAB (OLD WATER TOWER) @ NW COR AVE I & PROP 85TH ST E 60FT N & 20FT W/O C/L INT	CL 289D
LANCASTR (1975)	2415.581	RDBM TAG TOP OF CONC SUPPORT OF LGE WATER TANK 90FT N C/L AVE I & 45FT W C/L 80TH ST E	CL 290D

QUAD-YEAR	ELEV	DESCRIPTION (INCLUDE QUAD AND YEAR IN DESCRIPTION)	BM NUMBER
LANCASTR (1975)	2402.240	CSBM MON FLUSH 25FT S C/L AVE I & 25FT W C/L 75TH ST E 15FT W PP 482159E MKD (BM 107-29 1961)	CL 294D
LANCASTR (1975)	2396.935	CS MON IN CONC 2IN UP 33FT S C/L AVE I & 142FT W C/L 65TH ST E 3FT S PP NO 1121124 MKD (BM 107- 31 1961)	CL 297D
LANCASTR (1975)	2399.979	RDBM TAG TOP OF CONC WEIR BOX 35FT N C/L AVE I 400FT E/O 65TH ST E	CL 298D
LANCASTR (1975)	2398.820	L&T E CB DRWY HSE NO 6007 AVE I 40FT N & 100FT E C/L INT E AVE I & 60TH ST E	CL 299D
LANCASTR (1975)	2384.581	2IN IP 1FT ABOVE GROUND 40FT S OF C/L INT AVE I & 45TH ST E (USE E EDGE)	CL 305D
LANCASTR (1975)	2382.961	L&T NE COR CONC WLK HSE NO 4010 AVE I 90FT S & 140FT E C/L INT AVE I & 40TH ST E	CL 307D
LANCASTR (1975)	2381.248	L&T SE COR CONC SLAB @ NE COR BLDG NO 3606 AVE I 82FT S C/L & 150FT E C/L 36TH ST E	CL 309D
LANCASTR (1975)	2375.562	CS MON IN WELL @ C/L INT AVE I & 25TH ST E MKD (T7N, R11W, 1/4 COR 7-18)(E EDGE)	CL 313
LANCASTR (1975)	2372.378	L&T SE COR OF CONC APRON OF GAS STA 55FT N C/L AVE I & 65FT W C/L 20TH ST E	CL 316
LANCASTR (1975)	2413.879	CS MON IN WELL 20IN DN @ C/L INT 20TH ST W & AVE K-8 MKD (SUR 1/4 SEC COR 29 28 T7N R12W) N EDGE	CL 323
LANCASTR (1975)	2480.485	L&T IN CONC SLAB IN FRONT OF DOOR TO HSE 42423 20TH ST W 100FT W C/L & 250FT N C/L AVE L-8	CL 327
LANCASTR (1975)	2481.968	CS MON IN WELL 22IN DN @ C/L INT 20TH ST W & AVE L-8 MKD (CO SUR 1/4 SEC COR 32 33 T7N R12W)	CL 328
BASELINE (1973)	2523.094	USC&GS BRASS DISK IN TOP OF CONC POST 4IN UP 208FT E OF C/L 20TH ST W & 33FT N C/L AVE M MKD (D 489 1955)	CL 330
BASELINE (1973)	2518.075	CS MON IN WELL 18IN DN @ C/L INT AVE M & 25TH ST W MKD (1/4 COR 32 5 T6N R12W)	CL 334
BASELINE (1973)	2523.214	L&T IN SE COR OF CONC DR TO HSE NO 2524 AVE M 140FT S C/L & 215FT W C/L 25TH ST W	CL 335
BASELINE (1973)	2520.107	USC&GS MON TOP OF CONC POST 4IN UP 300FT E C/L 30TH ST W & 34FT N C/L AVE M 6FT W PP NO 1054594E MKD (E 489 1955)	CL 336

QUAD-YEAR	ELEV	DESCRIPTION (INCLUDE QUAD AND YEAR IN DESCRIPTION)	BM NUMBER
BASELINE (1973)	2514.806	CS MON IN WELL @ C/L INT AVE M & 30TH ST W MKD (SEC COR 31 32 5 6 T7N T6N R12W)	CL 337
LANCASTR (1975)	2448.604	CS MON IN WELL 21IN DN @ C/L INT AVE L & 25TH ST W MKD (CO SUR 1/4 SEC COR 29, 32, T7N, R12W)	CL 382
LANCASTR (1975)	2448.798	L&T IN BOTTOM STEP @ W EDGE OF CONC STEPS TO HSE NO 2507 AVE L 73FT N C/L & 78FT W C/L 25TH ST W	CL 383
LANCASTR (1975)	2441.097	CS MON IN WELL 13IN DN @ C/L INT AVE L & 30TH ST W MKD (CO SUR 29, 30, 31, 32, T7N, R12W)	CL 384
LANCASTR (1975)	2441.135	L&T E EDGE CONC DR 75FT S & 195FT W C/L INT AVE L & 30TH ST W	CL 385
LANCASTR (1975)	2433.248	CS MON IN WELL 10 IN DN @ C/L INT AVE L & 35TH ST W MKD (1/4 COR 30, 31, T7N, R12W, RE5869) ( E EDGE)	CL 387
LANCASTR (1975)	2428.278	CS MON IN WELL 10IN DN @ C/L INT AVE L & 40TH ST W MKD (T7N, R12W, R13W, 25, 30, 36, 31, RE 5869) ( SE EDGE)	CL 388
LANCASTR (1975)	2431.834	L&T IN W EDGE 2FT CONC WALK 50FT S & 110FT W/O C/L INT AVE L & 40TH ST W	CL 389
LANCASTR (1975)	2428.327	USGS MON @ NW COR AVE L & 45TH ST W 38FT N & 37FT W C/L INT MKD (R 49 1929 RESET 1942)	CL 391
BASELINE (1973)	2491.198	CS MON IN WELL 14IN DN @ C/L INT AVE M & 50TH ST W MKD ( CO SUR 35 36 2 1 T7N T6N R13W 1927) (W EDGE)	CL 394
BASELINE (1973)	2496.524	CS MON IN WELL 18IN DN @ C/L INT OF AVE M & 55TH ST W MKD (CO SUR 1/4 COR SEC 35, 2 R-13W T-7N T-6N USE S EDGE)	CL 395
BASELINE (1973)	2513.813	CS MON IN WELL 22IN DN @ C/L INT OF AVE M & 60TH ST W MKD (SEC COR 34 35 3 2 T7N T6N R13W)	CL 397
LANCASTR (1975)	2381.930	CS MON IN WELL 18IN DN @ C/L INT 60TH ST E & AVE H-8 PROP MKD (CO SUR 1/4 SEC COR 10 11 T7N R11W) S EDGE	CL 411D
LANCASTR (1975)	2384.906	RDBM TAG IN SE COR CONC WEIR BOX @ HSE NO 45609 60TH ST E 110FT W C/L & 55FT N C/L AVE H-8 PROP	CL 412D
LANCASTR (1975)	2369.410	CS MON IN WELL 18IN DN @ C/L INT 60TH ST E & AVE H MKD (CO SUR 2 3 10 11 T7N R11W) S EDGE	CL 413D

QUAD-YEAR	ELEV	DESCRIPTION (INCLUDE QUAD AND YEAR IN DESCRIPTION)	BM NUMBER
LANCASTR (1975)	2359.670	CS MON IN WELL 23IN DN @ C/L INT 60TH E & AVE G-8 MKD (CO SUR 1/4 SEC COR 2 3 T7N R11W) N EDGE	CL 415D
LANCASTR (1975)	2360.925	L&T NR S EDGE OF CONC WK 145FT N & 130FT W C/L INT 60TH ST E & AVE G-8	CL 416D
LANCASTR (1975)	2351.605	CS MON IN WELL 20IN DN @ C/L INT AVE G & 60TH ST E MKD (CO SUR 2 3 34 35 T7N T8N R11W) USE N EDGE	CL 417D
LANCASTR (1975)	2343.550	CS MON IN WELL 24IN DN @ C/L INT 60TH ST E & AVE F-8 MKD (CO SUR 1/4 COR 34 35 T8N R11W)	CL 420D
LANCASTR (1975)	2336.360	RD MON IN WELL 8IN DN @ SW COR AVE F & 60TH ST E 47FT W & 25FT S C/L INT MKD (1958)	CL 422D
LANCASTR (1975)	2338.493	RD MON IN WELL @ NE COR AVE F & 65TH ST E 24FT N & 42 FT E C/L INT MKD (1958)	CL 424D
LANCASTR (1975)	2342.690	RD MON IN WELL @ NW COR AVE F & 70TH ST E 34FT N & 25FT W C/L INT MKD (1958)	CL 425D
LANCASTR (1975)	2343.133	CS MON IN WELL 8IN DN @ C/L INT AVE F & 70TH ST ST E MKD (26 25 35 36 R11W T8N RE 5869) N EDGE	CL 426D
LANCASTR (1975)	2346.856	L&BN ON E EDGE CONC FTG OF 36IN STANDPIPE 40FT N/O C/L AVE F & 31FT W/O C/L 75TH ST E PROP	CL 427D
LANCASTR (1975)	2345.419	CS MON IN WELL 12IN DN @ C/L INT AVE F & 75TH ST E MKD (CO SUR 1/4 COR 25 36 R11W T8N RE 2177) N EDGE	CL 428D
LANCASTR (1975)	2347.918	CS MON IN WELL 9IN DN @ C/L INT AVE F & 80TH ST E MKD (25 30 36 31 T8N R10W R11W RE 5869) W EDGE	CL 430D
LANCASTR (1975)	2353.572	CS MON 16IN DN @ C/L INT 90TH ST E & AVE F MKD (CO SURV 30 29 31 32 R10W T8N RE 2177) E EDGE	CL 434D
LANCASTR (1975)	2364.074	2IN IP CONC PLUG & BT SPK IN WELL 15IN DN @ C/L INT 90TH ST E & AVE F-8 (USE SPK)	CL 436D
LANCASTR (1975)	2373.241	RD MON IN WELL WITH CONC COLLAR @ SE COR 90TH ST E & AVE G 30FT E & 40FT S C/L INT MKD (1958)	CL 438D
LANCASTR (1975)	2497.672	USC&GS MON 3IN UP 60FT E C/L SIERRA HWY OPP BLDG NO 42445 2200FT S AVE L MKD (U 811 1947)	CL 470
LANCASTR (1975)	2486.467	USC&GS MON 12IN DN 60FT E C/L SIERRA HWY OPP BLDG NO 42607 1250FT S AVE L MKD (B 57 1926 RESET 1955)	CL 471



QUAD-YEAR	ELEV	DESCRIPTION (INCLUDE QUAD AND YEAR IN DESCRIPTION)	BM NUMBER
LANCASTR (1975)	2447.343	USC & GS MON 12IN DN 59FT E C/L SIERRA HWY & 75FT N C/L PROP AVE K-8 MKD (T811 1947)	CL 472
LANCASTR (1975)	2332.052	USGS MON DN 3IN IP FLUSH 49FT W/O SLY RAIL MAIN LINE SPRR 1199FT N/O C/L AVE I MKD (USGS 2335 1902) IN BACK OF 45354 SIERRA HWY	CL 474
LANCASTR (1975)	2317.009	USC&GS MON S EDGE HDWL CULV G 90&50 26FT W/O C/L SIERRA HWY & 0.3MI S AVE G MKD (Z 811 1947)	CL 476
LANCASTR (1975)	2304.913	USC&GS MON 10IN UP 34FT E C/L SIERRA HWY & 1450FT S AVE F MKD (Y 56 1926)	CL 477
LANCASTR (1975)	2301.771	USGS MON DN 3IN IP 8IN UP 85FT E C/L SIERRA HWY & 800FT N/O AVE F MKD ( BM 33 2302B 1902)	CL 478
LANCASTR (1975)	2303.926	USGS TRI STA MON 15IN UP 227FT W C/L SIERRA HWY & 2200FT N AVE F MKD (OBAN 1929 LINT)	CL 479
LANCASTR (1975)	2301.128	USC&GS REF MON 8IN UP 227FT W C/L SIERRA HWY & 2280FT N AVE F MKD (OBAN NO 2 1941)	CL 480
LANCASTR (1975)	2300.473	USC&GS MON FLUSH W END S CONC ABUT OF RR BRIDGE 73FT N C/L AVE E & 121FT E C/L SIERRA HWY MKD (H 487 1955)	CL 481
LANCASTR (1975)	2303.630	USC&GS MON FLUSH TOP OF E END OF S CONC ABUT OF SPRR BRIDGE 88FT N C/L AVE C & 141FT E C/L SIERRA HWY MKD (J 487 1955)	CL 482
LANCASTR (1975)	2305.536	USC&GS MON FLUSH S END W HDWL CULV UNDER SPRR 35FT N C/L AVE B & 122FT E C/L SIERRA HWY MKD (N 487 1955)	CL 483
LANCASTR (1975)	2307.793	USC&GS MON FLUSH N END HDWL OF SPRR CULV 123FT E C/L SIERRA HWY & 213FT S/O C/L AVE A (KERN CO LINE) MKD (M 487-1955)	CL 484
LANCASTR (1975)	2333.720	RDBM TAG E CB 60FT S BCR @ SE COR DIVISION ST & AVE H-8 20FT E & 135FT S C/L INT	CL 485D
LANCASTR (1975)	2331.853	CS MON (N EDGE) IN WELL 18IN DN @ C/L INT AVE H-8 & DIVILION ST MKD (CO SUR 1/4 SEC COR 10 11 T7N R12W 1927)	CL 487D
LANCASTR (1975)	2332.951	CS MON 10IN DN @ C/L INT DIVISION ST & AVE H MKD (CO SUR 3 2 10 11 T7N R12W 1927) W EDGE	CL 488D
LANCASTR (1975)	2327.388	L&T NW COR CONC WK BLDG NO 46350 205FT S & 45FT E C/L INT DIVISION ST & AVE G-8	CL 490A

QUAD-YEAR	ELEV	DESCRIPTION (INCLUDE QUAD AND YEAR IN DESCRIPTION)	BM NUMBER
LANCASTR (1975)	2325.382	CS MON IN WELL 8IN DN @ C/L INT DIVISION ST & AVE G-8 MKD (1/4 COR 2 3 T7N R12W RE 5869) USE SE EDGE	CL 491
LANCASTR (1975)	2322.475	2IN IP CONC PLUG & NAIL 12IN UP @ SE COR AVE G & DIVISION ST 35FT S & 35FT E/O C/L INT USE E EDGE	CL 492
LANCASTR (1975)	2320.357	CS BR CAP MON IN WELL 18IN DN @ C/L INT DIVISION ST & AVE G MKD (CO SUR 34 35 3 2 T8N T7N R12W 1927)	CL 493
LANCASTR (1975)	2314.862	L&T @ NE COR CONC SLAB @ SIDE ENT N SIDE OF HSE NO 47159 DIVISION ST 100FT W C/L & 80FT S C/L AVE F-8	CL 494
LANCASTR (1975)	2306.126	CS MON IN WELL 17IN DN @ C/L INT AVE F & DIVISION ST MKD (CO SUR 26 27 34 35 T8N R12W RE 329)	CL 497
LANCASTR (1975)	2300.715	CS MON IN WELL 17IN DN @ C/L INT DIVISION ST & AVE E-8 MKD (CO SUR 1/4 COR 26 27 T8N R12W RE329)	CL 498
LANCASTR (1975)	2295.274	RD BM MON IN WELL 6IN DN @ SW COR DIVISION ST & AVE E 27FT W & 51FT S/O C/L INT 4FT WLY PP NO 1404026E MKD (1957)	CL 499
LANCASTR (1975)	2295.579	CS MON IN WELL 18IN DN @ C/L INT AVE E & 5TH ST W MKD (CO SUR 1/4 COR 22 27 T8N R12W RE 329) ( N EDGE)	CL 501
LANCASTR (1975)	2348.676	RDBM TAG CONC SLAB NR 36IN STANDPIPE 40FT N C/L AVE J & 640FT E 50TH ST W	CL 532
LANCASTR (1975)	2348.013	CS MON IN WELL 24IN DN @ C/L INT AVE J & 50TH ST W MKD (CO SUR 14, 13, 23, 24, T7N, R13W)	CL 533
LANCASTR (1975)	2337.748	2IN IP 6IN DN 50FT S & 50FT E C/L INT 50TH ST W & AVE I-8	CL 534
LANCASTR (1975)	2337.665	2IN IP 6IN DN 50FT N & 50FT E C/L INT 50TH ST W & AVE I-8	CL 535
LANCASTR (1975)	2329.636	CSBM MON IN TOP 12IN CONC POST, 5IN UP, 89FT N C/L AVE I & 30FT E C/L 45TH ST W MKD (BM 102-9 1957)	CL 537
LANCASTR (1975)	2317.654	CSBM MON TOP 12IN POST 6IN UP 42FT N C/L AVE I & 63FT E C/L 35TH ST W, 39FT E OF DRVWY HSE 3355 & 25FT W PP NO. 865024E MKD ( BM 102-7 1957)	CL 539

QUAD-YEAR	ELEV	DESCRIPTION (INCLUDE QUAD AND YEAR IN DESCRIPTION)	BM NUMBER
LANCASTR (1975)	2317.410	L&PK TOP NW COR N HDWL OF BRIDGE NO 53-406 22FT N C/L AVE I & 100FT E C/L 30TH ST W	CL 540
LANCASTR (1975)	2316.761	CS MON TOP CONC POST 4IN UP 86FT N C/L AVE I & 2FT W C/L 25TH ST W 4FT S PP 1162700E MKD (BM 102-5 1957)	CL 542
LANCASTR (1975)	2368.232	CS MON 12IN DN 40FT S/O C/L INT 30TH ST E & AVE H-8 MKD (1/4 COR 7 8 T7N R11W ) USE E EDGE	CL 5540
LANCASTR (1975)	2358.851	CS MON 15IN DN @ C/L INT 30TH ST E & AVE H MKD (SEC COR 5 6 7 8 T7N R11W CO SUR RE 2177) USE S EDGE	CL 5560
LANCASTR (1975)	2352.791	2IN IP CONC PL & NAIL (PT UP) FL 50FT E/O C/L 30TH ST E & 50FT S/O C/L AVE G-8 USE SE RIM	CL 5570
LANCASTR (1975)	2349.832	CS MON 18IN DN @ C/L INT 30TH ST E & AVE G-8 MKD (1/4 SEC COR 6 7 T7N R11W ) USE S EDGE	CL 5580
LANCASTR (1975)	2343.178	CS MON IN WELL 9IN DN @ C/L INT 30TH ST E & AVE G MKD (CO SUR 31 32 5 6 T7N T8N R11W) USE SW EDGE	CL 560A
LANCASTR (1975)	2334.955	CS MON 14IN DN @ C/L INT 30TH ST E & AVE F-8 MKD (1/4 SEC COR 31 32 CO SUR T8N R11W) S EDGE	CL 561
LANCASTR (1975)	2336.290	1 1/2 IN IP 50FT E/O C/L 30TH ST E & 50FT N/O C/L AVE F-8 (USE NE RIM)	CL 562
LANCASTR (1975)	2328.565	1 1/2 IN IP CONC PL & NAIL (PT UP) 47FT E/O C/L 30TH ST E & 47FT S/O C/L AVE F	CL 563
LANCASTR (1975)	2327.227	CS MON 20IN DN @ C/L INT 30TH ST E & AVE F MKD (CO SUR 29 30 31 32 T8N R11W RE329) USE E EDGE	CL 564
LANCASTR (1975)	2318.844	CS MON (E EDGE) IN WELL 15IN DN @ C/L INT 30TH ST E & AVE E-8 MKD (CO SUR 1/4 COR 29 30 T8N R11W 1925)	CL 566
LANCASTR (1975)	2296.422	RD BM MON IN WELL 8IN DN 5FT S/O PP NO 1270585E 36FT S C/L AVE E & 240 FT W C/L 5TH ST E PROP MKD (1959)	CL 567
LANCASTR (1975)	2296.552	CS MON (E EDGE) IN WELL 9IN DN @ C/L INT AVE E & PROP 5TH ST E MKD (CO SUR 1/4 COR 23 26 T8N R12W 1928)	CL 568
LANCASTR (1975)	2300.276	CS MON (N EDGE) IN WELL 16IN DN @ C/L INT AVE E & 10TH ST E PROP MKD (CO SUR 23 24 25 26 T8N R12W 1928)	CL 569

QUAD-YEAR	ELEV	DESCRIPTION (INCLUDE QUAD AND YEAR IN DESCRIPTION)	BM NUMBER
LANCASTR (1975)	2301.955	RD BM MON IN WELL 8IN DN 6FT S/O PP NO 1270596E 36FT S/O C/L AVE E & 70FT E/O C/L 10TH ST E PROP MKD (1959)	CL 570
LANCASTR (1975)	2302.960	RD BM MON IN WELL 8IN DN 5FT S/O PP NO 1270605E 36FT S/O C/L AVE E & 240FT W/O C/L 15TH ST E PROP MKD (1959)	CL 571
LANCASTR (1975)	2302.583	CS MON IN WELL 24IN DN @ C/L INT AVE E & 15TH ST E MKD (CO SUR 1/4 COR 24 25 T8N R12W 1928) ( W EDGE)	CL 572
LANCASTR (1975)	2310.402	RD BM MON IN WELL 8IN DN 6FT S/O PP NO 1270627E 39FT S/O C/L AVE E & 225FT E/O C/L 25TH ST E PROP MKD (1959)	CL 576
LANCASTR (1975)	2311.829	1 1/2IN IP CONC PLUG & NAIL FL 50FT S & 50FT E/O C/L INT AVE E & 30TH ST E (N EDGE)	CL 577
LANCASTR (1975)	2313.345	RD BM MON IN WELL 8IN DN 5FT S/O PP NO 1270648E 28FT S/O C/L AVE E & 260FT W/O C/L 35TH ST E PROP MKD (1959)	CL 579
LANCASTR (1975)	2312.582	CS MON (N EDGE) IN WELL 22IN DN @ C/L INT AVE E & 35TH ST E MKD (CO SUR 1/4 SEC COR 20 29 T8N R11W )	CL 580
LANCASTR (1975)	2315.782	RD BM MON IN WELL 8IN DN 5FT S/O PP NO 1273708E 30FT S/O C/L AVE E & 250FT W/O C/L 40TH ST E PROP MKD (1959)	CL 581
LANCASTR (1975)	2314.412	CS MON IN WELL 22IN DN @ C/L INT AVE E & 45TH ST E PROP MKD (CO SUR 1/4 SEC COR 21 28 T8N R11W) USE N EDGE	CL 583
LANCASTR (1975)	2316.932	CS MON IN WELL 16IN DN @ C/L INT AVE E & 50TH ST E MKD (CO SUR 21 22 27 28 T8N R11W) USE N EDGE	CL 585A
LANCASTR (1975)	2321.176	CS MON IN WELL 10IN DN @ C/L INT AVE E & 55TH ST E MKD (CO SUR 1/4 COR 22 27 R11W T8N RE 329) N EDGE	CL 587D
LANCASTR (1975)	2321.874	CS MON IN WELL 14IN DN @ C/L INT AVE E & 60TH ST ST E MKD (CO SUR 22 23 26 27 T8N R11W) USE N EDGE	CL 589D
LANCASTR (1975)	2328.633	CS MON (E EDGE) IN WELL 18IN DN @ C/L INT 60TH ST E & PROP AVE E-8 MKD (CO SUR 1/4 COR 26 27 T8N R11W)	CL 591D
LANCASTR (1975)	2329.618	L&T SW COR CONC PUMP BASE 35FT N/O C/L AVE E-8 PROP & 170FT E/O C/L 60TH ST E MKD (BM)	CL 592D

QUAD-YEAR	ELEV	DESCRIPTION (INCLUDE QUAD AND YEAR IN DESCRIPTION)	BM NUMBER
LANCASTR (1975)	2337.821	L&T 4FT E BCR 38FT N C/L AVE I 50FT E C/L SIERRA HWY	CL 666D
LANCASTR (1975)	2336.946	CSBM MON 64FT N C/L AVE I & 168FT E C/L SIERRA HWY MKD (BM 101-132 1957)	CL 667D
LANCASTR (1975)	2350.784	RDBM TAG E CB 49FT N BCR @ NE COR SIERRA HWY & LANCASTER BLVD 116FT N & 30FT E C/L INT	CL 670D
LANCASTR (1975)	2355.441	L&T 10FT W BCR @ NW COR DIVISION ST & LANCASTER BLVD FROM W 30FT N & 44FT W C/L INT	CL 671
LANCASTR (1975)	2378.345	CSBM MON FLUSH 50FT S C/L AVE J & 174FT E C/L SIERRA HWY MKD (BM 101-128 1957)	CL 680D
LANCASTR (1975)	2350.252	CS MON IN WELL 30IN DN @ C/L INT AVE J & 55TH ST W PROP MKD (CO SUR 1/4 COR 14 23 R13W T7N RE 62)	CL 704
LANCASTR (1975)	2352.521	RD BM MON MKD (1960) IN WELL 8IN DN ON SW COR AVE J & 55TH ST W (PROP) 100FT W & 50FT S/O C/L INT 2IN I P MARKER 2FT S 3FT UP	CL 705
LANCASTR (1975)	2353.332	CS MON IN WELL 18IN DN @ C/L INT AVE J & 60TH ST W MKD ( 14, 15, 22, 23, T7N, R13W, CO SUR)	CL 706
LANCASTR (1975)	2354.917	RDBM TAG IN FTG OF FENCE COR ON NE COR AVE J & 60TH ST W, 33FT N & 43FT E/O C/L INT	CL 707
LANCASTR (1975)	2347.712	CS MON IN WELL 10IN DN @ C/L INT 60TH ST W & AVE I-8 (PROP) MKD (CO SUR 1/4 COR 14, 15, T7N R13W ) CO SURV	CL 708
LANCASTR (1975)	2346.268	RD MON IN WELL 8IN DN ON NW COR 60TH ST W & AVE I-8 (PROP) 1960, 95FT N & 50FT W C/L INT 2IN IP MARKER 2FT W 3FT UP	CL 709
LANCASTR (1975)	2348.748	USC&GS BR CAP IN CONC FLOOR OF GUARD HSE OF MIRA LOMA @ SE COR AVE I & 60TH ST W 125FT S & 100FT E C/L INT MKD (U 1153 1961)	CL 710
LANCASTR (1975)	2342.157	RDBM TAG ON CONC COLLAR OF SMH (S SIDE) 46FT N C/L AVE I & 8FT W C/L 55TH ST W PROP	CL 713
LANCASTR (1975)	2334.006	RDBM TAG IN CONC FTG OF COR FENCE POST ON SW COR 50TH ST W & AVE I 40FT S & 60FT W C/L INT	CL 714
LANCASTR (1975)	2329.642	RDBM TAG ON CONC COLLAR OF SMH (N SIDE) @ NE COR AVE I & 45TH ST W, 28FT N & 5FT E C/L INT	CL 716
LANCASTR (1975)	2388.044	L&T W EDGE CONC DR NR CONC BLK POST 42FT S C/L AVE K & 263FT W C/L 25TH ST W MKD (BM)	CL 721

QUAD-YEAR	ELEV	DESCRIPTION (INCLUDE QUAD AND YEAR IN DESCRIPTION)	BM NUMBER
LANCASTR (1975)	2386.127	CS MON IN WELL 20IN DN @ C/L INT AVE K & 30TH ST W MKD (CO SUR 19 20 29 30 R12W T7N) N EDGE	CL 722
LANCASTR (1975)	2385.463	RD MON IN WELL 8IN DN ON SE COR AVE K & 35TH ST W 100FT E & 50FT S C/L INT	CL 724
LANCASTR (1975)	2383.297	CS MON IN WELL 20IN DN @ C/L INT AVE K & 35TH ST W MKD (1/4 COR 19-30 R12W T7N) USE S EDGE	CL 725
LANCASTR (1975)	2382.440	CS MON IN WELL 6IN DN @ C/L INT AVE K & 40TH ST W MKD (SEC COR 19-24-25-30 R12W T7N)(W EDGE)	CL 726
LANCASTR (1975)	2359.987	RD MON IN WELL 8IN DN ON SE COR 30TH ST W & AVE J-8 100FT S & 50FT E C/L INT MKD(BM 196)	CL 729
LANCASTR (1975)	2360.128	USC & GS MON FL, 0.3MI E & 25FT N C/L INT AVE I & 70 TH ST W MKD (H747 1945)	CL 819
LANCASTR (1975)	2364.674	CSBM MON FLUSH ON NW COR AVE I & 70TH ST W 30FT N & 27FT W C/L INT MKD ( BM 102-15 1957)	CL 820
LANCASTR (1975)	2365.252	L&T CONC SLAB OF BLDG ON SW COR AVE I & 70TH ST W 114FT W & 70FT S C/L INT MKD (BM)	CL 821
LANCASTR (1975)	2374.185	L&T W END GAS ISL ON SE COR AVE I & 75TH ST W 115FT E & 90FT S C/L INT MKD (BM)	CL 822
LANCASTR (1975)	2376.072	USC&GS MON FLUSH NE COR AVE I & 75TH ST W 61FT N & 16FT E C/L INT MKD (B 306 1935)	CL 823
LANCASTR (1975)	2390.362	L&T CONC STANDPIPE SE COR AVE I & 80TH ST W 60FT S & 60FT E C/L INT MKD (BM)	CL 824
LANCASTR (1975)	2388.997	CS MON FLUSH NW COR AVE I & 80TH ST W 48FT N & 25FT W C/L INT MKD (BM 102-17 1957)	CL 825
LANCASTR (1975)	2403.550	RDBM TAG IN NE COR CONC WEIR BOX SE COR AVE I & PROP 85TH ST W 32FT S & 25FT E C/L INT	CL 826
LANCASTR (1975)	2399.657	CSBM MON FL, 28FT N C/L AVE I & 7FT E C/L PROP 85TH ST W MKD ( BM 102-18 1957)	CL 827
LANCASTR (1975)	2419.971	L&T CONC WK HSE SE COR AVE I & 90TH ST W 83FT S & 60FT E C/L INT MKD (BM)	CL 828
LANCASTR (1975)	2421.553	CSBM MON NW COR AVE I & 90TH ST W , 31FT N & 70FT W C/L INT MKD (BM 102-19 1957)	CL 829
LANCASTR (1975)	2417.508	RDBM MON IN WELL 8IN DN SE COR 90TH ST W & PROP AVE H-8 75FT S & 25FT E C/L INT 2IN IP MARKER 2FT E 3FT UP	CL 830

QUAD-YEAR	ELEV	DESCRIPTION (INCLUDE QUAD AND YEAR IN DESCRIPTION)	BM NUMBER
LANCASTR (1975)	2422.683	L&T IN 24IN CONC STANDPIPE @ SE COR 90TH ST W & PROP AVE H-8 180FT E & 30FT S C/L INT MKD (BM)	CL 831
LANCASTR (1975)	2430.030	RDBM TAG N CB PARKING AREA NW COR 90TH ST W & AVE H 155FT W & 44FT N C/L INT	CL 832
LANCASTR (1975)	2430.436	RDBM TAG W CB PARKING AREA NW COR 90TH ST W & AVE H 250FT N & 50FT W C/L INT	CL 833
LANCASTR (1975)	2428.555	RDBM TAG CONC BASE OF 3IN IP BREATHER SE COR 90TH ST W & PROP AVE G-8 50FT S & 40FT E C/L INT	CL 834
LANCASTR (1975)	2429.801	RDBM MON IN WELL 8IN DN ON NW COR 90TH ST W & PROP AVE G-8 210FT N & 23FT W C/L INT 6FT S PP K5409Y 2IN IP MKR 3FT UP 2FT W	CL 835
LANCASTR (1975)	2424.604	CS MON IN WELL 14IN DN @ C/L INT 90TH ST W & AVE G MKD (CO SUR 31, 32, 5, 6, T8N, T7N, R13W)	CL 836
LANCASTR (1975)	2416.502	L&T IN CONC WK OF HSE SW COR 90TH ST W & AVE F 380FT S & 85FT W C/L INT MKD (BM)	CL 838
LANCASTR (1975)	2416.594	CS MON 18IN DN @ C/L INT 90TH ST W & AVE F MKD (SEC COR 29 30 31 32 T8N R13W)	CL 839
LANCASTR (1975)	2422.565	CS MON 14IN DN @ C/L INT 90TH ST W & AVE E-8 MKD (T8N R13W 29-30)	CL 840
LANCASTR (1975)	2424.247	L&T IN CONC PORCH STORE BLDG NW COR 90TH ST W & AVE E-8 100FT N & 80FT W C/L INT MKD (BM)	CL 841
LANCASTR (1975)	2433.322	L&T CONC PORCH HSE SW COR 90TH ST W & AVE E 68FT S & 92FT W C/L INT MKD (BM)	CL 843
LANCASTR (1975)	2437.356	CS MON 18IN DN @ C/L INT 90TH ST W & AVE D MKD (SEC COR 17 18 19 20 T8N R13W)	CL 846
LANCASTR (1975)	2440.671	RDBM TAG IN CONC FTG OF 10IN BREATHER NE COR PUMP HSE SE COR 90TH ST W & AVE D 150FT E & 56FT S C/L INT	CL 847
LANCASTR (1975)	2440.280	CS MON IN WELL 12IN DN @ C/L INT 90TH ST W & PROP AVE B-8 MKD (7 8 T8N R13W) EDGE	CL 852A
LANCASTR (1975)	2445.129	RDBM TAG IN BASE CONC STAND PIPE ON NW COR 90TH ST W & PROP AVE B-8 30FT N & 55FT W/O C/L INT	CL 853
LANCASTR (1975)	2438.042	CS MON IN WELL 14IN DN @ C/L INT 90TH ST W & AVE B MKD (5 6 7 8 T8N R13W) N EDGE	CL 855D

QUAD-YEAR	ELEV	DESCRIPTION (INCLUDE QUAD AND YEAR IN DESCRIPTION)	BM NUMBER
LANCASTR (1975)	2427.885	RDBM MON IN WELL 8IN DN SE COR AVE B & 85TH ST W 167FT E & 35FT S C/L INT 2IN IP MARKER 2FT S 3FT UP	CL 8570
LANCASTR (1975)	2415.916	CS MON 10IN DN @ C/L INT AVE B & 80TH ST W MKD (SEC COR 4 5 8 9 T8N R13W)S EDGE	CL 8580
LANCASTR (1975)	2416.178	RDBM MON IN WELL 8IN DN @ NE COR AVE B & 80TH ST W 30FT N & 72FT E C/L INT 2IN IP MKR 3FT UP 2FT N	CL 8590
LANCASTR (1975)	2407.480	RD MON IN WELL 8IN DN NE COR AVE B & PROP 75TH ST W 28FT N & 42 E C/L INT 2IN IP MARKER 2FT N & 3FT UP MKD (1960)	CL 8610
LANCASTR (1975)	2395.215	CS MON 8IN DN @ C/L INT AVE B & 70TH ST W MKD (CO SUR T8N R13W 3 4 9 10)E EDGE	CL 8620
LANCASTR (1975)	2396.487	RDBM MON IN WELL 8IN DN NE COR AVE B & 70TH ST W 25FT N & 65FT E C/L INT 2IN IP MARKER 2FT N 3FT UP	CL 8630
LANCASTR (1975)	2388.050	RDBM MON IN WELL 8IN DN NE COR AVE B & 65TH ST W 33FT N & 96FT E C/L INT 2IN IP MARKER 2FT N 3FT UP	CL 8650
LANCASTR (1975)	2380.348	CS MON IN WELL 14IN DN @ C/L INT AVE B & 60TH ST W MKD (T8N R13W 2 3 10 11)USE E EDGE	CL 8660
LANCASTR (1975)	2380.919	USGS MON FLUSH @ SE COR AVE B & 60TH ST W 27TH S & 32FT E/O C/L INT MKD (R-27 1929) USE N EDGE	CL 8670
LANCASTR (1975)	2382.372	L&T IN CONC APRON GARAGE SE COR 60TH ST W & PROP AVE B-8 15FT S & 118FT E C/L INT MKD (BM)	CL 869
LANCASTR (1975)	2381.200	RDBM MON IN WELL 8IN DN SE COR 60TH ST W & PROP AVE C 160FT S & 22FT E C/L INT 2IN IP MARKER 2FT E 3FT UP	CL 871
LANCASTR (1975)	2382.464	RD MON IN WELL 8IN DN NE COR 60TH ST W & AVE C-8 5FT N & 90FT E C/L INT 2IN IP MARKER 2FT N 3FT UP	CL 873
LANCASTR (1975)	2384.557	US&GS BR CAP IN CONC HDWL @ NE COR AVE D & 60TH ST W 30FT N & 30FT E C/L INT MKD (B1154 1961)	CL 874
LANCASTR (1975)	2385.008	ST HWY BR CAP IN CONC IN HDWL NW COR 60TH ST W & AVE D 40FT N & 24FT W C/L INT	CL 875
LANCASTR (1975)	2375.291	L&T IN CONC SLAB OF HSE SE COR 60TH ST W & AVE D-8 120FT E & 70FT S C/L INT	CL 877



QUAD-YEAR	ELEV	DESCRIPTION (INCLUDE QUAD AND YEAR IN DESCRIPTION)	BM NUMBER
LANCASTR (1975)	2359.736	CS MON 6IN DN @ C/L INT 60TH ST W & PROP AVE E MKD (CO SUR 1927, 22, 23, 26, 27, T8N, R13W)	CL 878
LANCASTR (1975)	2358.172	RD MON IN WELL 8IN DN SW COR 60TH ST W & PROP AVE E 115FT S & 30FT W C/L INT MKD (1960) 2IN IP MARKER 2FT W 3FT UP	CL 879
LANCASTR (1975)	2352.120	L&T 2IN DN @ C/L INT 60TH ST W & AVE F	CL 882
LANCASTR (1975)	2352.693	CS MON 2IN UP SE COR 60TH ST W & AVE F 31FT S & 75FT E C/L INT MKD (BM 103-11 1957)	CL 883
LANCASTR (1975)	2351.741	L&T IN CONC CROSS GUTTER @ C/L INT 60TH ST W & PROP AVE F-8	CL 884
LANCASTR (1975)	2352.261	RDBM TAG IN CONC FTG 5FT CHAIN LINK FEN AROUND AIRPORT SE COR 60TH ST W & PROP AVE F-8 60FT S & 50FT E C/L INT	CL 885
LANCASTR (1975)	2351.863	RDBM TAG SE COR FTG OF AIRPORT FENCE @ NE COR 60TH ST W & AVE G 50FT N & 50FT E C/L INT	CL 886
LANCASTR (1975)	2353.215	CS MON IN WELL 12IN DN @ C/L INT 60TH ST W & AVE G MKD (CO SUR T7N, T8N, R13W, 2, 3, 34, 35)	CL 887
LANCASTR (1975)	2356.836	CS MON IN WELL 17IN DN @ C/L INT 60TH ST W & PROP AVE G-8 MKD (CO SUR 1/4 SEC COR 2, 3, T7N R13W)	CL 888
LANCASTR (1975)	2357.692	RD MON IN WELL 8IN DN SW COR 60TH ST W & PROP AVE G-8, 180 FT S & 31FT W C/L INT MKD (1960) 2IN IP MARKER 2FT & 3FT UP	CL 889
LANCASTR (1975)	2351.850	CS MON 3IN UP SE COR 60TH ST W & PROP AVE H-8 42FT S & 42FT E/O C/L INT MKD (BM 103-16 RE 5869 1957)	CL 893
LANCASTR (1975)	2390.171	RDBM MON IN WELL 8IN DN NW COR AVE D & PROP 65TH ST W 30FT N & 180FT W C/L INT 2IN IP MARKER 2FT N 3FT UP	CL 895
LANCASTR (1975)	2397.062	CS MON (N EDGE) IN WELL 18IN DN @ C/L INT AVE D & 70TH ST W MKD (15 16 21 22 T8N R13W)	CL 896
LANCASTR (1975)	2410.822	RDBM TAG IN 12IN CONC STANDPIPE NE COR AVE D & 75TH ST W 55FT N & 40FT E C/L INT	CL 898
LANCASTR (1975)	2407.390	CS MON (E EDGE) IN WELL 16IN DN @ C/L INT 75TH ST W & AVE D MKD (16 21 T8N R13W)	CL 899

QUAD-YEAR	ELEV	DESCRIPTION (INCLUDE QUAD AND YEAR IN DESCRIPTION)	BM NUMBER
LANCASTR (1975)	2415.886	CS MON IN WELL 24IN DN @ C/L INT 80TH ST W & AVE D MKD (16 17 20 21 T8N R13W)	CL 900
LANCASTR (1975)	2418.118	L&T IN NW CONC FTG OF HAY BARN ON SE COR AVE D & 80TH ST W 32FT S & 50FT E C/L INT MKD (BM)	CL 901
LANCASTR (1975)	2426.386	RDBM MON IN WELL 8IN DN NE COR AVE D & 85TH ST W 105FT E & 28FT N C/L INT 2IN IP MARKER 2FT N 3FT UP	CL 902
LANCASTR (1975)	2425.978	CS MON (E EDGE) IN WELL 14IN DN @ C/L INT AVE D & 85TH ST W MKD (17 20 T8N R13W)	CL 903
BASELINE (1973)	2610.028	CSBM MON 5IN UP 76FT N & 44FT W C/L INT AVE M & 70TH ST W MKD (BM 104-17 1958)	CL 905
LANCASTR (1975)	2515.511	CSBM MON 5IN UP ON SW COR 70TH ST W & AVE L-8 66FT S & 46FT W C/L INT MKD (BM 104-18 1958)	CL 906
LANCASTR (1975)	2444.937	CSBM MON 4IN UP ON SW COR 70TH ST W & AVE L 78FT S & 28FT W C/L INT MKD (BM 104-19 1958)	CL 907
LANCASTR (1975)	2378.386	CSBM MON 5IN UP ON NW COR 70TH ST W & AVE K 32FT N & 32FT W C/L INT MKD (BM 104-21 1958)	CL 909
LANCASTR (1975)	2362.386	CSBM MON 5IN UP ON NW COR 70TH ST W & AVE J-8 280FT N & 30FT W C/L INT MKD (BM 104-22 1958)	CL 910
LANCASTR (1975)	2357.688	CS BM MON FL ON SW COR AVE J & 70TH ST W 55FT S & 30FT W C/L INT MKD (BM 104-23 1958)	CL 911
LANCASTR (1975)	2359.391	CSBM MON 5IN UP ON NW COR 70TH ST W & AVE I-8 350FT N & 26FT W C/L INT MKD (BM 104-24 1958)	CL 912
LANCASTR (1975)	2441.937	CS BM MON 4IN UP 45FT N & 40FT E C/L INT 90TH ST E & AVE J MKD (BM 107-24 1961)	CL 10750
LANCASTR (1975)	2341.869	CS BM MON 6IN UP 46FT S & 32FT E C/L INT AVE E & 90TH ST E MKD (106 122 1959)	CL 11650
LANCASTR (1975)	2346.695	RDBM TAG IN CONC FTG FLUSH 50FT S & 53FT E/O C/L INT 90TH ST E & AVE E-8	CL 11670
LANCASTR (1975)	2355.365	CS BM MON 2IN UP 30FT N & 77FT E C/L INT AVE F & 90TH ST E MKD (BM 116-6 1961)	CL 11680
LANCASTR (1975)	2364.858	CSBM MON 3IN UP 80FT N & 30FT E C/L INT 90TH ST E & AVE F-8 MKD (BM 116-5 1961)	CL 11690
LANCASTR (1975)	2374.372	LACS BM MON 4IN UP 70FT S & 27FT W C/L INT 90TH ST E & AVE G MKD (BM 116-4 1961)	CL 11700

QUAD-YEAR	ELEV	DESCRIPTION (INCLUDE QUAD AND YEAR IN DESCRIPTION)	BM NUMBER
LANCASTR (1975)	2383.413	CSBM MON 4IN UP 20FT S & 80FT E C/L INT 90TH ST E & AVE G-8 MKD (BM 116-3 1961)	CL 11710
LANCASTR (1975)	2394.595	CSBM MON FL 35FT N & 115FT E C/L INT 90TH ST E & AVE H MKD (BM 116-2 1961)	CL 11720
LANCASTR (1975)	2402.147	CSBM MON FL 155FT N & 30FT E/D C/L INT 90TH ST E & FUT AVE H-8 MKD(116-1 1961)	CL 11730
LANCASTR (1975)	2412.927	CSBM MON FL 30FT S & 68FT W C/L INT 90TH ST E & AVE I MKD (BM 107-26 1961)	CL 11740
LANCASTR (1975)	2423.595	CSBM MON 2IN UP 550FT N & 35FT E C/L INT 90TH ST E & AVE I-8 MKD (BM 107-25 1961)	CL 11750
LANCASTR (1975)	2455.530	CSBM MON 4IN UP 29FT S & 90FT W C/L INT 90TH ST E & AVE J-8 MKD (BM 107-23 1961)	CL 11770
LANCASTR (1975)	2475.116	CSBM MON FL 60FT S & 27FT W C/L INT 90TH ST E & AVE K MKD (BM 107-22 1961)	CL 1178
LANCASTR (1975)	2490.246	CSBM MON 3IN UP 45FT S & 33FT E C/L INT 90TH ST E & AVE K-8 MKD (BM107-21 1961)	CL 1179
LANCASTR (1975)	2498.052	CSBM MON FL 30FT S & 60FT W C/L INT 90TH ST E & AVE L MKD (BM 107-20 1961) 1961)	CL 1180
LANCASTR (1975)	2513.247	CSBM MON FL 35FT N & 34FT E C/L INT 90TH ST E & AVE L-8 MKD (BM 107-19 1961)	CL 1181
BASELINE (1973)	2525.992	CSBM MON 4IN UP 36FT N C/L AVE M & 36FT E C/L 90TH ST E MKD (BM 107-18 1961)	CL 1182
LANCASTR (1975)	2448.737	CS MON 14IN DN @ C/L INT AVE D (PAVED) & 95TH ST W (DIRT RD) MKD (T8N R13W 1/4 SEC COR 18-19) (NW EDGE)	CL 1208
LANCASTR (1975)	2461.563	RDBM TAG 1FT N/O S EDGE CONC SLAB & 2FT E/O W EDGE 110 FT N C/L AVE D & 215 FT E C/L 100TH ST W	CL 1209
LANCASTR (1975)	2460.531	CS MON (S EDGE) IN WELL 20IN DN @ C/L INT AVE D & 100TH ST W MKD (SEC COR 13 18 19 24 T8N R13W R14W)	CL 1210
LANCASTR (1975)	2485.352	CS MON (SW EDGE) IN WELL 14IN DN @ C/L INT AVE D & 110TH ST W MKD (CO SUR 13 14 23 24 T8N R14W)	CL 1213
LANCASTR (1975)	2497.273	CS MON IN WELL 18IN DN 5FT N C/L INT 110TH ST W & AVE I MKD(CO SUR 11 12 13 14 T7N R14W RE 2177)	CL 1303

QUAD-YEAR	ELEV	DESCRIPTION (INCLUDE QUAD AND YEAR IN DESCRIPTION)	BM NUMBER
LANCASTR (1975)	2480.849	USC&GS MON FLUSH 33FT N C/L AVE I & 125FT W C/L 105TH ST W 14FT SE OF SW COR EDISON TOWER 57-4 MKD (A 306 1935)	CL 1304
LANCASTR (1975)	2477.160	CS MON IN WELL 14IN DN @ C/L INT AVE I & 105TH ST W MKD (CO SUR 1/4 COR 12,13, R14W, T7N RE 2177)	CL 1305
LANCASTR (1975)	2455.871	CS MON IN WELL 22IN DN, @C/L INT AVE I & 100TH ST W MKD (CO SUR 7, 12, 13, 18, T7N R14W,R13W)	CL 1306
LANCASTR (1975)	2436.506	CSBM MON FLUSH 56FT S C/L AVE I @ 95TH ST W CTR EDISON TOWER NO 26-4 MKD (BM 102-21 1957)	CL 1307
LANCASTR (1975)	2417.434	USGS MON 24IN UP 298FT E C/L 90TH ST W & 0.2MI N AVE I 89FT S FIELD RD TO HAYSHED 274FT NE OF NE COR METAL SHED OVER WELL MKD (LINT DEL SUR)	CL 1308
BASLINE (1973)	2525.355	CSBM MON 5IN UP 34FT N C/L AVE M & 175FT E C/L 35TH ST W 6FT E PP 1054605E MKD (BM 104-7 1958)	CL 1373
BASLINE (1973)	2516.717	CS MON IN WELL @ C/L INT AVE M & 35TH ST W MKD (1/4 COR 31 6 R12W T7N T6N)	CL 1374
BASLINE (1973)	2567.449	CS MON IN WELL 18IN DN @ C/L INT AVE M & 45TH ST W MKD (1/4 COR SEC 1 36 T6N T7N R13W)	CL 1376
BASLINE (1973)	2529.415	CSBM MON 4IN UP 28FT S & 41FT W C/L INT AVE M & 47TH ST W 4FT W PP 168073E MKD (BM 104-12 1958)	CL 1377
LANCASTR (1975)	2463.678	USGS MON 10IN UP (LEANING N) 0.25MI N AVE L & 150FT E C/L SIERRA HWY MKD (2462 B 36 1902) MARKER POST 1FT W	CL 1426
LANCASTR (1975)	2422.893	CS BM 6IN DN ON SE COR SIERRA HWY & AVE K 198FT S & 62FT E C/L INT MKD (BM 101-126 1957)	CL 1427A
LANCASTR (1975)	2421.907	L&BN SE COR CONC APRON ON SW COR SIERRA HWY & & AVE K 133FT S & 61FT W/O C/L INT MKD (BM)	CL 1428
LANCASTR (1975)	2396.435	RDBM TAG N CB 1FT W BCR @ NW COR SIERRA HWY & AVE J8 86FT W & 18FT N C/L INT	CL 1429C
LANCASTR (1975)	2325.614	L&BR W CB 1FT N BCR @ SW COR AVE H8 & BEECH AVE 49FT S & 20FT W C/L INT	CL 1430C
LANCASTR (1975)	2324.919	SQ HD SPK N CB 4FT W BCR @ NW COR AVE H8 & BEECH AVE 25FT N & 48FT W C/L INT	CL 1431C
LANCASTR (1975)	2325.219	RDBM TAB W END OF N HDWL ON NW COR SIERRA HWY & AVE H 30FT N & 49FT W C/L INT	CL 1432C

QUAD-YEAR	ELEV	DESCRIPTION (INCLUDE QUAD AND YEAR IN DESCRIPTION)	BM NUMBER
LANCASTR (1975)	2324.551	CSBM MON 3IN UP ON NE COR SIERRA HWY & AVE H 155FT N & 90FT E C/L INT MKD (BM 101-135 1957)	CL 1433D
LANCASTR (1975)	2313.831	CS MON ON NE COR SIERRA HWY & AVE G 112FT N & 89FT E C/L INT MKD (BM 101-137 1957) SURVEY MARKER SIGN 3FT UP 1FT W	CL 1435
LANCASTR (1975)	2313.800	RDBM TAG CTR OF S HDWL ON NW COR SIERRA HWY & AVE G 185FT N & 45FT W C/L INT	CL 1436
LANCASTR (1975)	2307.309	RDBM TAG CTR OF S HDWL ON NW COR SIERRA HWY & AVE F8 (PROP) 200FT N & 50FT W C/L INT	CL 1437
LANCASTR (1975)	2307.121	L&BN CTR OF N HDWL ON NW COR SIERRA HWY & AVE F8 (PROP) 225FT N & 50FT W C/L INT MKD (BM)	CL 1438
LANCASTR (1975)	2305.990	RDBM TAG CONC BASE OF SEMAPHORE NO 4022 123FT E C/L SIERRA HWY & 0.1MI S AVE F	CL 1439
LANCASTR (1975)	2301.654	RD HD SPK IN CHIS SQ N END E HD WALL BRIDGE NO 53-509 ON NE COR SIERRA HWY & AVE E 88FT N & 24 FT E C/L INT	CL 1440
LANCASTR (1975)	2301.559	L&PK NAIL N END OF E HDWL OF BRIDGE NO 53-510 0.15MI S AVE D8 (PROP) 25FT E C/L SIERRA HWY	CL 1441
LANCASTR (1975)	2298.598	CSBM MON 2IN UP ON SE COR SIERRA HWY & AVE D8 (PROP) 90FT E & 250FT S C/L INT MKD (BM 101-144 1957)	CL 1442
LANCASTR (1975)	2302.913	RDBM TAG W CB SIERRA HWY (E CB OF ISLAND) 31FT W C/L & 20FT S C/L AVE D (HWY 138)	CL 1443
LANCASTR (1975)	2301.168	L&PK NAIL CTR OF N HDWL ON NW COR SIERRA HWY & AVE D (HWY 138) 172FT W & 50FT N C/L INT	CL 1444
LANCASTR (1975)	2302.453	6X6 CONC POST W/NAIL 10IN UP ON SW COR SIERRA HWY & AVE C8 (PROP) NR NE COR CO SANITATION DIST YD NO 14 50FT S & 56FT W C/L INT POST MKD (C)	CL 1445
LANCASTR (1975)	2300.835	CSBM MON 2IN UP ON NE COR SIERRA HWY & PROPOSED AVE C-8 275FT N & 40FT E C/L INT MKD (BM 101-146 1957)	CL 1446
LANCASTR (1975)	2304.256	RDBM TAG N END BRIDGE 53-512 25FT W C/L SIERRA HWY & 90FT N C/L AVE C	CL 1447
LANCASTR (1975)	2303.869	RDBM TAG N END CONC HDWL 25FT W C/L SIERRA HWY & 0.6MI N AVE C	CL 1448

QUAD-YEAR	ELEV	DESCRIPTION (INCLUDE QUAD AND YEAR IN DESCRIPTION)	BM NUMBER
LANCASTR (1975)	2303.808	8IN DIA CONC POST W/IRON SPK 35FT E C/L SIERRA HWY 0.75MI N AVE C 2FT IP MARKER 1FT S MKD (W56)	CL 1449
LANCASTR (1975)	2303.278	WIRE SPK S END CONC HDWL OF CULV G383&10 25FT E C/L SIERRA HWY & 106FT S C/L AVE B	CL 1450
LANCASTR (1975)	2307.109	RD HD SPK S END E HDWL BRIDGE 53-514 25FT E C/L SIERRA HWY & 0.65MI N AVE B MKD (BM 101-150)	CL 1451
LANCASTR (1975)	2307.147	RDBM TAG N END W HDWL BRIDGE 53-514 25FT W C/L SIERRA HWY & 0.65MI N AVE B	CL 1452
LANCASTR (1975)	2307.056	WIRE SPK S END COND HDWL OF CULVERT G 426-19 ON SE COR SIERRA HWY & AVE A 25FT E & 213 FT S C/L INT	CL 1453
LANCASTR (1975)	2305.562	RDBM TAG CTR N HDWL OF CULV NO 1.38 23FT N C/L AVE D & 15FT W C/L 15TH ST W (PROP)	CL 1455
LANCASTR (1975)	2311.785	USC&GS BR DISK IN NW COR OF E CONC HDWL @ ENT TO SANITATION DIST NO 14 YD 39FT N C/L AVE D & 155FT E C/L PROP 20TH ST W MKD (D1154 1961)	CL 1456
LANCASTR (1975)	2310.750	L&PK IN W END CONC GATE PAD TO SANITATION DIST NO 14 YD 40FT N C/L AVE D & 125FT E C/L PROP 20TH ST W MKD (2314.170)	CL 1457
LANCASTR (1975)	2317.153	RDBM TAG CTR OF CONC HDWL L 1185&00 23FT N C/L AVE D & 75FT E C/L PROP 25TH ST W	CL 1458
LANCASTR (1975)	2318.731	RDBM TAG CTR OF CONC HDWL L 1176&00 21FT N C/L AVE D & 816FT W C/L PROP 25TH ST W	CL 1459
LANCASTR (1975)	2327.417	CHIS X ON ANCHOR BOLT IN WATER TANK FOOTING ON NE COR AVE D & 30TH ST W (PROP) 127FT N & 3FT E C/L INT	CL 1460
LANCASTR (1975)	2334.011	RDBM TAG CTR CONC HDWL L 1134&00 21FT N C/L AVE D & 330FT E C/L PROP 35TH ST W	CL 1462
LANCASTR (1975)	2337.231	RDBM TAG CTR CONC HDWL L 1125&00 21FT N C/L AVE D & 570FT W C/L PROP 35TH ST W	CL 1463
LANCASTR (1975)	2342.600	USGS MON 12IN UP ON SE COR AVE D & 40TH ST W 40FT S & 12FT E C/L INT MKD (R46 1929) (NW 1/4)	CL 1464
LANCASTR (1975)	2344.625	RDBM TAG CTR CONC HDWL L 1101&00 21FT N C/L AVE D & 356FT W C/L PROP 40TH ST W	CL 1465
LANCASTR (1975)	2350.755	STATE HWY BR CAP CTR CONC HDWL L 1085&00 21FT N C/L AVE D & 964FT E C/L PROP 45TH ST W	CL 1466

QUAD-YEAR	ELEV	DESCRIPTION (INCLUDE QUAD AND YEAR IN DESCRIPTION)	BM NUMBER
LANCASTR (1975)	2366.880	USC&GS REF MON 6IN UP ON NE COR AVE D & 50TH ST W 95FT N & 61FT E C/L INT MKD (AVENUE NO 1 1960)	CL 1468
LANCASTR (1975)	2367.625	USC&GS MON 4IN UP ON NW COR AVE D & 50TH ST W 102FT N & 92FT W C/L INT MKD (AVENUE 1960)	CL 1469
LANCASTR (1975)	2375.635	RDBM TAG CTR OF CONC HDWL L 1030&00 21FT N C/L AVE D & 490FT E C/L PROPOSED 55TH ST W (TAG MISSING RESET RDBM TAG)	CL 1470
LANCASTR (1975)	2377.536	2IN IP W/CUT SPK & CONC COLLAR ON C/L PROP 55TH ST W & 45FT S C/L AVE D	CL 1471
LANCASTR (1975)	2363.480	CS MON IN WELL 12IN DN @ C/L INT 50TH ST W & PROPOSED AVE J-8 MKD (1/4 SEC COR 23, 24, R13W, T7N) USE S EDGE	CL 1474
LANCASTR (1975)	2378.189	L&BN CONC FOOTING OF GATEPOST SW COR AVE K & 70TH ST W 40FT S & 103 FT W APPROX C/L INT MKD (BM)	CL 1804
LANCASTR (1975)	2381.876	2IN IP WITH CE TAG 6IN UP ON SE COR AVE K & 75TH ST W PROP 50FT S & 50FT E APPROX C/L INT	CL 1805
LANCASTR (1975)	2380.272	CS MON 12IN DN IN WELL @ C/L INT AVE K & 75TH ST W MKD (21 28 T7N R12W)	CL 1806
LANCASTR (1975)	2395.769	CS MON IN WELL 18IN DN @ C/L INT AVE K & 80TH ST W MKD (20 21 28 29 T7N R13W)	CL 1807
LANCASTR (1975)	2427.578	CS MON IN WELL 10IN DN @ C/L INT AVE K & 85TH ST W MKD (1/4 COR 20 29 T7N R13W)	CL 1809
LANCASTR (1975)	2430.057	2IN IP WITH CE TAG 8IN UP ON NW COR AVE K & 85TH ST W PROP 50FT N & 50FT W APPROX C/L INT (N EDGE)	CL 1810
LANCASTR (1975)	2469.980	1.5IN IP & BRAD FLUSH ON SE COR AVE K & 90TH ST W 50FT S & 50FT E APPROX C/L INT	CL 1811
LANCASTR (1975)	2491.409	1.5IN IP NR CTR TOWER NO 35-1 75FT S C/L AVE K & 600FT W C/L 90TH ST W (S EDGE)	CL 1812
LANCASTR (1975)	2523.756	2IN IP WITH CE TAG 2IN DN ON SE COR AVE K & 95TH ST W PROP 50FT S & 50FT E APPROX C/L INT	CL 1813
LANCASTR (1975)	2523.694	2IN IP WITH CE TAG 4IN DN ON NW COR AVE K & 95TH ST W PROP 50FT N & 50FT W APPROX C/L INT	CL 1814
LANCASTR (1975)	2583.148	RDBM MON 8IN DN 20FT E C/L 100TH ST W PROP ON TP LINE & 90FT N C/L AVE K 2IN IP MARKER 3FT UP & 2FT N MKD (BM 1969)	CL 1816

QUAD-YEAR	ELEV	DESCRIPTION (INCLUDE QUAD AND YEAR IN DESCRIPTION)	BM NUMBER
LANCASTR (1975)	2530.560	RDBM MON 8IN DN ON TP LINE 20FT E C/L 100TH ST W & 33FT N C/L AVE J-8 2IN IP MKR 3FT UP 2FT N MKD ( BM1964)	CL 1818
LANCASTR (1975)	2470.683	CS MON 13IN DN IN WELL @ C/L INT AVE J & 100TH ST W MKD (CO SUR 24, 19, 13, 18, R13W, R14W, T7N)	CL 1819
LANCASTR (1975)	2467.180	L&BN CONC FOOTING TOWER 25-5 100FT E C/L 100TH ST W & 500FT N AVE J	CL 1820
LANCASTR (1975)	2454.467	CS MON 16IN DN @ C/L INT 100TH ST W & FUT AVE I-8 MKD (CO SUR 1/4 SEC COR 13, 18, T7N, R13W, R14W) 2IN IP MKR 30IN UP 5FT NE	CL 1822
BASELINE (1973)	2610.433	CS MON IN WELL 8IN DN @ C/L INT AVE M & 70TH ST W MKD (CO SUR 33, 34, 4, 3, T6N, R13W, 1927)	CL 1997
BASELINE (1973)	2561.260	CS MON IN WELL 22IN DN @ C/L INT AVE M & 65TH ST W MKD (1/4 COR 34 3 T6N T7N R13W)	CL 1998
BASELINE (1973)	2501.220	CSBM MON 4IN UP ON SW COR AVE M & 55TH ST W 39FT S & 37FT W C/L INT MKD (BM 104-14 1958)	CL 2000
BASELINE (1973)	2519.711	CSBM MON 4IN UP ON NE COR AVE M & 25TH ST W 34FT N & 60FT E C/L INT MKD (BM 104-5 1958)	CL 2001
BASELINE (1973)	2519.179	CS MON IN WELL 6IN DN @ C/L INT AVE M & 15TH ST W MKD (1/4 COR 33 4 T7N T6N R12W)	CL 2002
BASELINE (1973)	2518.347	CSBM MON 4IN UP ON NE COR AVE M & 15TH ST W 31FT N & 215FT E C/L INT MKD (BM 104-3 1958)	CL 2003
BASELINE (1973)	2522.496	CS MON 21IN DN IN WELL @ C/L INT AVE M & 10TH ST W MKD (SEC COR 3 4 33 34 T7N T6N R12W 1928)	CL 2004
BASELINE (1973)	2528.390	CS MON IN WELL 21IN DN @ C/L INT AVE M & 5TH ST W MKD (1/4 COR 34 3 T7N T6N R12W)	CL 2006
LANCASTR (1975)	2436.453	RDBM MON IN WELL 8IN DN ON SW COR 90TH ST W & AVE D-8 210FT S & 46FT W C/L INT 2IN IP MKR 3FT UP 2FT W	CL 2007
BASELINE (1973)	2532.133	RDBM TAG N CB AVE M 40FT N C/L & 250FT E C/L 5TH ST W IN FRONT OF COUNTY DISPATCH CENTER	CL 2008
BASELINE (1973)	2519.239	CSBM MON IN CONC POST 4IN UP ON NW COR AVE M & 5TH ST E 40FT N & 100FT W C/L INT MKD (BM 121-1 1961)	CL 2009
BASELINE (1973)	2518.361	CS MON 8IN DN IN WELL @ C/L INT AVE M & 5TH ST E MKD (1/4 COR 35 2 T6N T7N R12W)	CL 2010



QUAD-YEAR	ELEV	DESCRIPTION (INCLUDE QUAD AND YEAR IN DESCRIPTION)	BM NUMBER
BASELINE (1973)	2504.093	CSBM MON 4IN UP ON NW COR AVE M & 10TH ST E 72FT CL N & 40FT W C/L INT MKD (BM 121-2 1961)	2011
BASELINE (1973)	2503.910	CS MON IN WELL 8IN DN @ C/L INT AVE M & 10TH ST E MKD (SEC COR 35 36 1 2 R12W T6N T7N)	2012
BASELINE (1973)	2487.151	CSBM MON 4IN UP ON SW COR AVE M & 15TH ST E 40FT CL S & 50FT W C/L INT MKD (BM 121-3 1961)	2013
BASELINE (1973)	2486.152	L&BN CONC FOOTING 4FT BARBED WIRE FENCE @ SE COR AVE M & 15TH ST E 40FT S & 30FT E C/L INT MKD (BM)	2014
BASELINE (1973)	2477.074	CSBM MON 4IN UP ON SW COR AVE M & 20TH ST E 68FT CL W & 40FT S C/L INT MKD (BM 121-4 1961)	2015
BASELINE (1973)	2475.965	L&BN CONC FOOTING 7FT CHAIN LINK FENCE @ NW COR AVE M & 20TH ST E 50FT N & 45FT W C/L INT MKD (BM)	2016
BASELINE (1973)	2470.154	CSBM MON 4IN UP 38FT S C/L AVE M & 229FT W C/L 25TH ST E MKD (BM 121-5 1961) 2IN IP MKR 3FT UP 2FT N	2017
BASELINE (1973)	2469.673	L&BN CONC FOOTING 7FT CHAIN LINK FENCE ON NE COR AVE M & 25TH ST E 40FT N & 500FT E C/L INT MKD (BM)	2018
BASELINE (1973)	2470.881	CSBM MON 4IN UP ON SW COR AVE M & 30TH ST E 38FT CL S & 125FT W C/L INT MKD (BM 121-6 1961) 2IN IP MKR 3FT UP 2FT N	2019
BASELINE (1973)	2471.328	L&BN CONC FOOTING COR FENCE POST @ SE COR AVE M & 30TH ST E 40FT S & 40FT E C/L INT MKD (BM)	2020
BASELINE (1973)	2472.194	CSBM MON 4IN UP 38FT S C/L AVE M & 585FT W 35TH ST E MKD (BM 121-7 1961) 2IN IP MKR 3FT UP 2FT N	2021
BASELINE (1973)	2474.437	L&BN CONC IRRIG STANDPIPE 30FT N C/L AVE M & 30FT W C/L FUT 35TH ST E MKD (BM)	2022
BASELINE (1973)	2473.160	CSBM MON 4IN UP ON SE COR AVE M & 40TH ST E 38FT CL S & 34FT E C/L INT MKD (BM 121-8 1961) 2IN IP MKR 3FT UP 2FT N	2023
BASELINE (1973)	2473.168	L&BN CONC OF 4FT STANDPIPE ON NE COR AVE M & 40TH ST E 30FT N & 28FT E C/L INT MKD (BM)	2024
BASELINE (1973)	2473.278	CSBM MON 4IN UP ON SW COR AVE M & FUT 45TH ST E 37FT S & 90FT W C/L INT MKD (BM 121-9 1961) 2IN IP MKR 3FT UP 2FT N	2025

QUAD-YEAR	ELEV	DESCRIPTION (INCLUDE QUAD AND YEAR IN DESCRIPTION)	BM NUMBER
BASELINE (1973)	2472.386	CS MON IN WELL 10IN DN @ C/L INT AVE M & FUT 45TH ST E MKD (1/4 COR 33 4 T6N T7N R11W)	CL 2026
BASELINE (1973)	2479.746	CSBM MON 6IN UP ON SE COR AVE M & 50TH ST E 95FT S & 36FT E C/L INT MKD (BM 120-2 1961) 2IN IP MKR 3FT UP 2FT W	CL 2028
BASELINE (1973)	2483.066	CSBM MON 4IN UP 32FT N C/L AVE M & 450FT W 55TH ST E MKD (BM 121-10 1961) 2IN IP MKR 3FT UP 2FT W	CL 2029
BASELINE (1973)	2486.953	CSBM MON 4IN UP @ NW COR FUT AVE M & 60TH ST E 30FT N & 42FT W C/L INT MKD (BM 121-11 1961) 2IN IP MKR 3FT UP 2FT S	CL 2030
BASELINE (1973)	2484.457	LACS MON 8IN DN @ FUTURE C/L INT OF AVE M & 65TH ST E MKD(1/4 COR 35 2 T6N T7N R11W) 2IN IP 3FT U 2FT S	CL 2031
BASELINE (1973)	2496.269	CS MON @ C/L INT FUT AVE M & 75TH ST E MKD (1/4 COR 36 1 T6N T7N R11W)	CL 2033
BASELINE (1973)	2499.226	RDBM MON IN WELL 8IN DN ON NW COR FUT AVE M & 80TH ST E 160FT N & 23FT W C/L INT BET PP 1185566E & DEADMAN 2IN IP MKR 3FT UP 2FT W	CL 2034
BASELINE (1973)	2514.666	CS MON 14IN DN @ C/L INT FUT AVE M & 85TH ST E MKD (1/4 COR 31 6 T6N T7N R10W) 2IN IP MKR 3FT UP 2FT E	CL 2035
BASELINE (1973)	2666.006	RDBM TAG CONC COLLAR FIRE HYD @ SE COR AVE M & FUT 75TH ST W 28FT S & 40FT E C/L INT	CL 2057
BASELINE (1973)	2706.621	USC&GS MON IN SE LEG EDISON TOWER 62-3 50FT N C/L AVE M & 800FT E 80TH ST W MKD (A 1045 1960)	CL 2058
BASELINE (1973)	2721.705	RDBM MON IN WELL 8IN DN @ NW COR FUT AVE M & 80TH ST W 20FT N & 15FT W C/L INT 2IN IP MKR 3FT UP 2FT W	CL 2059
BASELINE (1973)	2864.381	CS MON 12IN DN @ FUT C/L INT AVE M & 85TH ST W MKD (1/4 SEC COR 32 5 T6N T7N R13W)	CL 2060
BASELINE (1973)	2756.755	CS MON 12IN DN @ FUT C/L INT AVE L-8 & 90TH ST W MKD (CO SUR 1/4 SEC COR 31, 32, R13W, T7N, 1927)	CL 2062
BASELINE (1973)	2702.202	USC&GS MON FLUSH 20FT S C/L AVE L (DIRT RD) & 0.4MI W 90TH ST W NR FUT 94TH ST W MKD (X 1044 1960)	CL 2063
BASELINE (1973)	2710.843	CS MON 24IN DN @ FUT C/L INT AVE L & 95TH ST W MKD (1/4 COR 30 31 T7N R13W)	CL 2064

QUAD-YEAR	ELEV	DESCRIPTION (INCLUDE QUAD AND YEAR IN DESCRIPTION)	BM NUMBER
BASELINE (1973)	2761.773	CS MON 24IN DN @ FUT C/L INT AVE L & 100TH ST W MKD (SEC COR 25 30 36 31 T7N R13W R14W)	CL 2065
LANCASTR (1975)	2371.903	RD BM TAG E CB 20 FT N C/L N DRIVE TO LA CO WATER DIST YD. 0.3 MI N & 42FT E C/L INT 50TH ST W & AVE K	CL 2079
LANCASTR (1975)	2349.488	2IN IP & CS TAG 3IN UP (LEANING SE) ON NW COR 50TH ST W & AVE J 60FT N & 60FT W C/L INT	CL 2080
LANCASTR (1975)	2352.333	USC&GS MON 3IN UP ON NE COR 60TH ST W & AVE G 72FT N & 49FT E C/L INT MKD (W 1153 1961)	CL 2081
LANCASTR (1975)	2342.639	CSBM MON 4IN UP 42FT S C/L AVE I & 0.5MI W 50TH ST W MKD (BM 102-11B 1962) 2IN IP MKR 3FT UP 2FT N	CL 2082
LANCASTR (1975)	2346.389	CSBM MON E HDWL DRIVE TO MIRA LOMA FACILITY 30FT S C/L AVE I & 1200FT E 60TH ST W MKD (BM 102-11A 1962)	CL 2083
LANCASTR (1975)	2362.511	CS MON IN WELL 14IN DN ON C/L 70TH ST W & 33FT S C/L AVE I MKD (CO SUR SEC COR 9, 10, 15, 16, R13W T7N)	CL 2084
LANCASTR (1975)	2357.395	CS MON IN WELL 21IN DN @ C/L INT 70TH ST W & FUT AVE I-8 MKD (CO SUR 1/4 SEC COR 16, 15, R13W, T7N, RE 62)	CL 2085
LANCASTR (1975)	2355.772	CS MON IN WELL 23IN DN @ C/L INT 70TH ST W & AVE J MKD (CO SUR 15, 16, 21, 22, R13W, T7N)	CL 2086
LANCASTR (1975)	2361.623	CS MON IN WELL 18IN DN @ C/L INT 70TH ST W & FUT AVE J-8 MKD (CO SUR 1/4 COR 21, 22, R13W, T7N RE 62)	CL 2087
LANCASTR (1975)	2399.560	CS MON IN WELL 20IN DN @ C/L INT 70TH ST W & FUT AVE K-8 MKD (1/4 COR 27, 28, R13W, T7N, RE 5869)	CL 2088
LANCASTR (1975)	2439.114	CS MON IN WELL 12IN DN @ C/L INT 70TH ST W & AVE L MKD (CO SUR 33, 34, 27, 28, R13W, T7N, 1927)	CL 2089
LANCASTR (1975)	2511.226	CS MON IN WELL 11IN DN @ C/L INT 70TH ST W & FUT AVE L-8 MKD (CO SUR 1/4 COR 33, 34, R13W, T7N, 1928)	CL 2090
LANCASTR (1975)	2435.844	CS MON IN WELL 17IN DN @ C/L INT AVE I & 95TH ST W MKD (CO SUR 1/4 COR 7, 18, R13W T7N)	CL 2091
LANCASTR (1975)	2426.724	CSBM MON 6IN UP ON SW COR 90TH ST W & AVE G 25FT S & 25FT W C/L INT MKD (BM 119-16 1961)	CL 2094

QUAD-YEAR	ELEV	DESCRIPTION (INCLUDE QUAD AND YEAR IN DESCRIPTION)	BM NUMBER
LANCASTR (1975)	2420.281	L&T CONC STANDPIPE SE COR 90TH ST W & AVE F-8 32FT S & 60FT E C/L INT MKD (BM)	CL 2095
LANCASTR (1975)	2415.321	CS MON IN WELL 18IN DN @ C/L INT 90TH ST W & AVE F-8 MKD (1/4 COR 31 32 T8N R13W)	CL 2096
LANCASTR (1975)	2431.139	CS MON IN WELL 18IN DN @ C/L INT 90TH ST W & AVE E MKD (SEC COR 19 20 29 30 T8N R13W)	CL 2097
LANCASTR (1975)	2437.002	2IN IP 6IN DN DN SW COR 90TH ST W & AVE D-8 50FT S & 50FT W C/L INT	CL 2098
LANCASTR (1975)	2443.709	USC&GS MON FLUSH DN SW COR 90TH ST W & AVE C 80FT W & 27FT S C/L INT MKD (LITTLE BUTTE 1932)	CL 2099
LANCASTR (1975)	2440.624	USGS MON 3IN UP @ NE COR 90TH ST W & AVE B 25FT N & 30FT E C/L INT MKD (1 TWN 1963)	CL 2100
LANCASTR (1975)	2427.581	CS MON 4IN DN @ C/L INT AVE B & FUT 86TH ST W MKD (1/4 COR 5 8 T8N R13W) N EDGE	CL 2101
LANCASTR (1975)	2407.322	CS MON 12IN DN @ C/L INT AVE B & FUT 75TH ST W MKD (1/4 COR 4 9 T8N R13W) W EDGE	CL 2102
LANCASTR (1975)	2382.302	USC&GS MON FLUSH DN SE COR 60TH ST W & FUT AVE C 170FT S & 40FT E C/L INT MKD (P 1154 1961)	CL 2104
LANCASTR (1975)	2359.941	USC&GS MON 4IN UP DN SE COR 60TH ST W & FUT AVE E 25FT S & 40FT E C/L INT MKD (A 1154 1961)	CL 2105
LANCASTR (1975)	2352.800	CO ENG MON 3IN UP ON SE COR 60TH ST W & FUT AVE F-8, 40FT S & 40FT E/O C/L INT MKD (BM 103-12A 1962 RE 5869)	CL 2106
LANCASTR (1975)	2357.212	USC&GS MON 4IN UP ON NE COR 60TH ST W & AVE H 37FT N & 25FT E/O C/L INT MKD (V 1153 1961)	CL 2107
LANCASTR (1975)	2356.221	CS MON IN WELL 12IN DN @ C/L INT 60TH ST W & AVE H MKD (2, 3, 10, 11, T7N, R13W, CO SUR )	CL 2108
LANCASTR (1975)	2468.487	CS MON IN WELL 15IN DN @ C/L INT AVE K & 90TH ST W MKD (CO SUR 19, 20, 29, 30, R13W, T7N, 1926 )	CL 2111
LANCASTR (1975)	2583.323	CS MON IN WELL 8IN DN @ C/L INT AVE K & FUT 100TH ST W MKD (SEC COR 24 25 19 30 R13W R14W T7N RE 5869)	CL 2112
LANCASTR (1975)	2530.730	CS MON 14IN DN @ C/L INT 100TH ST W & AVE J-8 MKD ( 1/4 COR 19, 24, R13W R14W T7N RE5869) 2IN IP MKR 3FT UP 5FT S	CL 2113

QUAD-YEAR	ELEV	DESCRIPTION (INCLUDE QUAD AND YEAR IN DESCRIPTION)	BM NUMBER
LANCASTR (1975)	2402.044	CSBM MON IN SIDE OF RESERVOIR @ NW COR AVE D & 70TH ST W 76FT N & 30FT W C/L INT MKD (BM 119-6 1961)	CL 2129
LANCASTR (1975)	2488.977	CSBM MON 72FT S & 32FT E C/L INT AVE D-8 & 110TH ST W MKD (BM 119-42 1961)	CL 2131
LANCASTR (1975)	2481.324	CS MON (NE EDGE) IN WELL 18IN DN @ C/L INT 110TH ST W & AVE E MKD (CO SUR 23 24 25 26 R14W T8N)	CL 2132
LANCASTR (1975)	2485.274	CSBM MON 6IN UP 117FT S & 30FT W C/L INT 110TH ST W & FUT AVE E MKD (BM 119-43 1961)	CL 2133
LANCASTR (1975)	2494.262	CS MON IN WELL 13IN DN @ C/L INT 110TH ST W & AVE E-8 30FT E PP 1222609E MKD (CO SUR 1/4SEC COR 25 26 T8N R14W)	CL 2134
LANCASTR (1975)	2496.363	CSBM MON 6IN UP 110FT S & 30FT W C/L INT 110TH ST W & AVE E-8 110FT S PP 1222609E MKD (BM 119-44 1961)	CL 2135
LANCASTR (1975)	2516.189	CSBM MON 6IN UP 260FT S & 35FT W C/L INT 110TH ST W & FUT AVE F MKD (BM 119-45 1961)	CL 2137
LANCASTR (1975)	2514.869	CS TRI STA MON 8IN UP 493FT S & 38FT W C/L INT AVE F & 110TH ST W MKD (DEL SUR G-1 ECC 1 1964)	CL 2138
LANCASTR (1975)	2490.811	CSBM MON 6IN UP 240FT S & 30FT W C/L INT 110TH ST W & AVE F-8 92FT N PP 1222581E MKD (BM 119-46 1961)	CL 2140
LANCASTR (1975)	2493.009	CS MON (N EDGE) 14IN DN @ C/L INT 110TH ST W & AVE G MKD (CO SUR 35, 36, 1, 2, R14W, T7N, T8N)	CL 2141
LANCASTR (1975)	2494.373	CS MON (W EDGE) IN WELL 12IN DN @ C/L INT 110TH ST W & AVE G -8 MKD (CO SUR 1/4 COR 1, 2, R14W T7N, RE2177)	CL 2143
LANCASTR (1975)	2499.024	CSBM MON 35FT W C/L 110TH ST W & 365FT S AVE G-8 MKD (BM 119-21 1961)	CL 2144
LANCASTR (1975)	2494.618	CS MON (E EDGE) IN WELL 24IN DN @ C/L INT 110TH ST W & AVE H MKD (SEC COR 1 2 11 12 T7N R14W)	CL 2145
LANCASTR (1975)	2500.017	CS MON (E EDGE) IN WELL 12IN DN @ C/L INT 110TH ST W & AVE H-8 MKD (1/4 COR 11 12 T7N R14W)	CL 2147
LANCASTR (1975)	2504.622	CS MON IN WELL 8IN DN @ C/L INT 110TH ST W & AVE I-8 MKD (1/4 COR 13 14 T7N R14W RE 5869)	CL 2149

QUAD-YEAR	ELEV	DESCRIPTION (INCLUDE QUAD AND YEAR IN DESCRIPTION)	BM NUMBER
LANCASTR (1975)	2535.534	USC&GS TRI STA MON FLUSH ON SW COR AVE J & 110TH ST W 45FT W & 40FT S C/L INT MKD (SUR 1932)	CL 2152
LANCASTR (1975)	2581.323	CS MON IN WELL 17IN DN @ C/L INT 110TH ST W & AVE J-8 MKD (1/4 COR 23 24 T7N R14W RE 5869) USE N EDGE	CL 2154
LANCASTR (1975)	2681.629	CSBM MON 6IN UP ON SW COR AVE K & 110TH ST W 82FT S & 27FT W C/L INT MKD (BM 119-27 1961)	CL 2157
LANCASTR (1975)	2341.410	L&T S END GAS PUMP ISL @ NE COR 90TH ST E & AVE E 75FT N & 80FT E C/L INT	CL 21650
LANCASTR (1975)	2346.758	CS MON FLUSH ON SW COR 90TH ST E & AVE E-8 56FT S & 27FT W C/L INT MKD (BM 116-7 1961)	CL 21660
LANCASTR (1975)	2382.857	CS MON IN WELL 11IN DN @ C/L INT 90TH ST E & AVE G-8 MKD (1/4 SEC COR 5 6 R10W T7N RE 5869) USE N EDGE	CL 21670
LANCASTR (1975)	2400.678	CS MON IN WELL 9IN DN @ C/L INT 90TH ST E & FUT AVE H-8 MKD (1/4 COR 7 8 T7N R10W RE 5869) USE W EDGE	CL 21680
LANCASTR (1975)	2353.229	L&BN 3FT CONC BASE OF VENT PIPE 140FT E & 38FT N C/L INT AVE F & 85TH ST E MKD (BM	CL 21700
LANCASTR (1975)	2338.894	L&T CONC WALK TO HSE @ NW COR 65TH ST E & AVE F 90FT N & 75FT W C/L INT 4FT N OF WOODEN PORCH MKD (BM)	CL 21720
LANCASTR (1975)	2323.441	USC&GS MON 6IN UP @ SW COR AVE E & 60TH ST E 20FT S & 35FT W C/L INT MKD (S 1155 1961)	CL 21730
LANCASTR (1975)	2318.442	CSBM MON ON NW COR AVE E & 50TH ST E 30FT N & 49FT W C/L INT MKD (BM 106-130 1959)	CL 2174
LANCASTR (1975)	2316.879	CSBM MON 2IN UP 27FT S & 15FT E C/L INT AVE E & 40TH ST E MKD (BM 106-132 1959)	CL 2175
LANCASTR (1975)	2312.149	CSBM MON 6IN UP @ SE COR AVE E & 30TH ST E 32FT E & 27FT S C/L INT MKD (BM 106-134 1959)	CL 2176
LANCASTR (1975)	2344.152	L&T N CB AVE G 1FT E BCR @ NE COR AVE G & 30TH ST E 77FT E & 42FT N C/L INT	CL 2177
LANCASTR (1975)	2378.111	2IN IP (SW EDGE) 6IN DN @ NW COR AVE I & 30TH ST E 53FT W & 47FT N C/L INT	CL 2178
LANCASTR (1975)	2381.965	CSBM MON 6IN UP 58FT S C/L AVE I ON C/L PROD 35TH ST E MKD (BM 107-37 1961)	CL 2179

QUAD-YEAR	ELEV	DESCRIPTION (INCLUDE QUAD AND YEAR IN DESCRIPTION)	BM NUMBER
LANCASTR (1975)	2383.190	CSBM MON 6IN UP 12FT E & 25FT S C/L INT AVE I & 45TH ST E MKD (BM 107-35 1961)	CL 21800
LANCASTR (1975)	2387.754	USC&GS MON @ SE COR AVE I & 50TH ST E 94FT E & 27FT S C/L INT 3FT S PP 1122574E MKD (G 1154 1951)	CL 21810
LANCASTR (1975)	2391.570	CSBM MON 145FT W & 23FT N C/L INT AVE I & 55TH ST E MKD (BM 107-33 1961)	CL 21820
LANCASTR (1975)	2396.824	CS BM MON 4IN DN @ NW COR AVE I & 60TH ST E 70FT N & 27FT W C/L INT 3FT W PP 991726E MKD (BM 107-32 1961)	CL 21830
LANCASTR (1975)	2314.230	CSBM MON @ SW COR 25TH ST E (DIRT RD) & AVE E 5FT W & 65FT S C/L INT MKD (BM 106-135 1959)	CL 2184
LANCASTR (1975)	2304.472	CSBM MON 6IN UP 28FT E & 36FT S C/L INT AVE E & FUT 15TH ST E 5FT S PP 1270606E MKD (BM 106-137 1959)	CL 2185
LANCASTR (1975)	2302.452	USC&GS MON 42FT S & 50FT E C/L INT AVE E & 10TH ST E MKD (F 1154 1961)	CL 2186
LANCASTR (1975)	2295.898	USC&GS MON 4IN UP @ NW COR AVE E & DIVISION ST 45FT N & 20FT W C/L INT MKD (E 1154 1961)	CL 2187
LANCASTR (1975)	2296.737	CSBM MON 6IN UP 90FT W & 35FT S C/L INT AVE E & 5TH ST W 4FT S PP 1270563E MKD (BM 106-141 1959)	CL 2188
LANCASTR (1975)	2488.600	CS MON (S EDGE) IN WELL 14IN DN @ C/L INT 90TH ST E & AVE K-8 MKD (CO SURV 1/4 SEC COR 29 30 R10W T7N)	CL 2189
LANCASTR (1975)	2511.836	CS MON IN WELL 11IN DN @ C/L INT 90TH ST E & FUT AVE L-8 MKD (CO CURV 1/4 31 32 R10W T7N)	CL 2190
LANCASTR (1975)	2476.685	L&BN S END CONC PUMP ISL OF GAS STA @ NW COR SIERRA HWY & AVE L 105FT N & 80FT W C/L INT MKD (BM)	CL 2191
LANCASTR (1975)	2375.362	RDBM TAG E CB 1FT N BCR @ NE COR SIERRA HWY & AVE J 75FT N & 40FT E C/L INT	CL 21920
LANCASTR (1975)	2301.260	USC&GS REF MON 7IN UP 188FT W C/L SIERRA HWY & 2175FT N AVE F MKD (OBAN NO 1 1941)	CL 2193
LANCASTR (1975)	2305.848	CS MON IN WELL 8IN DN @ C/L INT AVE D & FUT 15TH ST W MKD (1/4 COR 16 21 R12W T8N)	CL 2194

QUAD-YEAR	ELEV	DESCRIPTION (INCLUDE QUAD AND YEAR IN DESCRIPTION)	BM NUMBER
LANCASTR (1975)	2335.348	2IN IP CONC PL & CS TAG 6IN UP @ SW COR AVE H & DIVISION ST 50FT S & 50FT W C/L INT	CL 21950
LANCASTR (1975)	2374.367	L&T CONC WALK 3FT N & 2FT E OF SE COR BLDG 2201 AVE I 90FT N C/L & 1270FT W 25TH ST E	CL 2196
LANCASTR (1975)	2349.278	CS MON IN WELL 14IN DN @ C/L INT AVE G & FUT 55TH ST E MKD (CO SUR 1/4 SEC COR 3 34 T7N T8N R11W) USE N EDGE	CL 21970
LANCASTR (1975)	2346.713	CS MON IN WELL 15IN DN @ C/L INT AVE G & 50TH ST E MKD (CO SUR 3 4 33 34 T7N T8N R11W) USE S EDGE	CL 21980
LANCASTR (1975)	2348.117	USC&GS MON 2IN UP @ SW COR AVE G & 50TH ST E 25FT W & 35FT S C/L INT MKD (J 1154 1961)	CL 21990
LANCASTR (1975)	2345.842	CS MON IN WELL 18IN DN @ C/L INT AVE G & 40TH ST E MKD (CO SUR 33 32 5 4 R11W T7N T8N) USE S EDGE	CL 22000
LANCASTR (1975)	2318.030	CS MON IN WELL 12IN DN @ C/L INT AVE I & 25TH ST W MKD (1/4 COR 17 8 R12W T7N)	CL 2202A
LANCASTR (1975)	2321.694	CS MON IN WELL 11IN DN @ C/L INT AVE I & 20TH ST W MKD (8 9 17 16 R12W T7N RE5869) N EDGE	CL 22030
LANCASTR (1975)	2324.260	CSBM MON FLUSH IN PARKWAY @ NE COR AVE I & 15TH ST W 51FT N & 44FT E C/L INT MKD (BM 102-2 1957)	CL 22040
LANCASTR (1975)	2329.044	CS MON IN WELL 15IN DN @ C/L INT AVE I & 10TH ST W MKD (CO SUR 9 10 15 16 T7N R12W 1927) USE WEST EDGE	CL 22050
LANCASTR (1975)	2446.765	CS MON IN WELL 8IN DN @ C/L INT AVE L & 20TH ST W MKD (29 28 32 33 T7N R12W RE5869)	CL 2209
LANCASTR (1975)	2448.447	RDBM TAG W CB 1FT N BCR @ SW COR AVE L & 20TH ST W 40FT W & 76FT S C/L INT	CL 2210
LANCASTR (1975)	2379.121	RDBM TAG S CB 2FT W BCR @ SW COR LANCASTER BLVD & 10TH ST E 78FT W & 22FT S C/L INT	CL 22110
LANCASTR (1975)	2423.797	L&SQ SPK N CB @ NE COR AVE K & 4TH ST E 60FT E & 38FT N C/L INT MKD (AV 199)	CL 2212
LANCASTR (1975)	2423.027	CS TAG S CB AVE K 5FT E OF END CB 42FT S & 85FT E C/L INT AVE K & DIVISION ST 2FT N TP K10680Y	CL 2213
LANCASTR (1975)	2355.149	L&T DN C/L PROD OF LANCASTER BLVD FROM W 28FT E C/L INT DIVISION ST 5FT N OF DR TO HIGH SCHOOL	CL 22140



QUAD-YEAR	ELEV	DESCRIPTION (INCLUDE QUAD AND YEAR IN DESCRIPTION)	BM NUMBER
LANCASTR (1975)	2360.652	L&T CB 5FT W BCR @ SW COR DIVISION ST & LANCASTER BLVD TO E (MILLING ST TO W) 30FT S & 72FT W C/L INT	CL 22150
LANCASTR (1975)	2361.111	L&T CONC CB 6FT E BCR @ SE COR DIVISION ST & LANCASTER BLVD TO E (MILLING ST TO W) 31FT S & 61FT E C/L INT	CL 2216
LANCASTR (1975)	2410.350	L&BN W CB 8FT N BCR @ NW COR FIG AVE & AVE K SERVICE RD 50FT N & 15FT W C/L INT MKD (BM)	CL 2217
LANCASTR (1975)	2406.592	L&T N CB 7FT W OF C B @ NE COR 10TH ST W & AVE K 109FT E & 40FT N C/L INT	CL 2218
LANCASTR (1975)	2386.988	CS MON IN WELL 7IN DN @ C/L INT (AVE K & 25TH ST W MKD (CO SUR 1/4 SEC COR 20 29 T7N R12W)	CL 2221
LANCASTR (1975)	2385.014	2IN IP CONC PLUG & CS TAG 4IN UP @ SW COR AVE K & 40TH ST W 50FT W & 50FT S C/L INT	CL 2222
LANCASTR (1975)	2378.161	CS MON (N EDGE) IN WELL 12IN DN @ C/L INT AVE K & 45TH ST W MKD (1/4 COR 24 25 T7N R13W)	CL 2223
LANCASTR (1975)	2313.890	CS MON IN WELL 8IN DN @ C/L INT (AVE A & 20TH ST W TO THE N MKD (KERN CO LA CO 32, 33, 4, 5, R12W T8N, T9N, RE5869)	CL 2224
LANCASTR (1975)	2314.525	CSBM MON @ SW COR AVE A & 20TH ST W 40FT S & 40FT W C/L INT MKD (BM 117-1 1961)	CL 2225
LANCASTR (1975)	2320.248	CS MON (E EDGE) IN WELL 7IN DN @ C/L INT (AVE A & 25TH ST W (PROP) MKD (KERN CO LA CO 1/4 COR 32, 5, R12W, T8N, T9N, RE5869)	CL 2227
LANCASTR (1975)	2324.253	CSBM MON 30FT N C/L AVE A & 0.25MI W OF 25TH ST W (PROP) 30FT W OF POWER LINE MKD (BM 117-3 1961)	CL 2229
LANCASTR (1975)	2328.439	CS MON IN WELL 8IN DN @ C/L INT (AVE A & 30TH ST W MKD (LA & KERN CO 31-32, 6-5, T9N, T8N, R12W RE 5869)	CL 2230
LANCASTR (1975)	2328.706	CSBM MON @ SW COR AVE A & 30TH ST W 43FT S & 43FT W C/L INT MKD (BM 117-4 1961)	CL 2231
LANCASTR (1975)	2337.074	CS MON IN WELL 9IN DN @ C/L INT (AVE A & 35TH ST W PROP MKD (31, 6, T9N, T8N, R12W, RE5869)	CL 2232
LANCASTR (1975)	2337.712	L&BN CONC FOOTING 4FT BARBED WIRE FENCE @ ANCHOR POST 40FT N & 10FT W C/L INT (AVE A & 35TH ST W (PROP) MKD (BM)	CL 2233

QUAD-YEAR	ELEV	DESCRIPTION (INCLUDE QUAD AND YEAR IN DESCRIPTION)	BM NUMBER
LANCASTR (1975)	2344.603	CS MON IN WELL 7IN DN @ C/L INT AVE A & 40TH ST W MKD (36 31 1 6 T9N T8N R13W R12W RE 5869) USE S EDGE	CL 2234
LANCASTR (1975)	2344.451	CSBM MON 8IN UP @ SW COR AVE A & 40TH ST W (PROP) 71FT W & 40FT S C/L INT MKD (BM 117-6 1961)	CL 2235
LANCASTR (1975)	2351.919	CS MON IN WELL 7IN DN @ C/L INT AVE A & 45TH ST W MKD (36 1 T9N T8N R13W RE 5869) USE S EDGE	CL 2236
LANCASTR (1975)	2352.583	L&T E EDGE DRWY TO HSE @ NW COR AVE A & 45TH ST W 147FT W & 67FT N C/L INT MKD (BM)	CL 2237
LANCASTR (1975)	2357.568	CSBM MON 8IN UP 35FT S C/L AVE A & 0.2MI W 45TH ST W 32FT E PP 955226E MKD (BM 117-7 1961)	CL 2238
LANCASTR (1975)	2362.365	CS MON IN WELL 9IN DN @ C/L INT AVE A & 50TH ST W MKD (35 36 2 1 T8N T9N R13W RE 5869) E EDGE	CL 2239
LANCASTR (1975)	2362.947	CSBM MON 8IN UP @ SW COR AVE A & 50TH ST W 40FT W & 44FT S C/L INT MKD (BM 117-8 1961)	CL 2240A
LANCASTR (1975)	2371.575	CS MON IN WELL 9IN DN @ C/L INT AVE A & 55TH ST W MKD (35 2 R13W T8N T9N RE 5869) USE S EDGE	CL 2241C
LANCASTR (1975)	2372.110	CSBM MON 8IN UP @ SW COR AVE A & 55TH ST W (PROP) 30FT S & 50FT W C/L INT MKD (BM 117-9 1961)	CL 2242D
LANCASTR (1975)	2380.213	USGS MON 8IN UP @ SW COR AVE A & 60TH ST W 30FT S & 36FT W C/L INT MKD (LINT CORNERS 1929)	CL 2243D
LANCASTR (1975)	2380.758	CSBM MON 5IN UP @ SE COR AVE A & 60TH ST W 64FT S & 31FT E C/L INT MKD (BM 117-10A 1961)	CL 2244D
LANCASTR (1975)	2380.441	CS MON (S EDGE) IN WELL 14IN DN @ C/L INT 60TH ST W & AVE A-8 MKD (1/4 COR 3 2 T8N R13W)	CL 2245D
LANCASTR (1975)	2381.032	2IN IP 6IN UP @ SE COR AVE A-8 & 60TH ST W 50FT S & 50FT E/O C/L INT (S EDGE)	CL 2246D
LANCASTR (1975)	2367.905	RD BM TAG 4FT N DR @ NE COR ELM AVE & AVE J 84FT N & 17FT E C/L INT	CL 2247D
LANCASTR (1975)	2340.247	L&BN S CB SERVICE RD 8FT W BCR @ SW COR AVE J & 23RD ST W 47FT W & 71FT S C/L INT MKD (BM)	CL 2250
LANCASTR (1975)	2339.772	CS MON IN WELL 10IN DN @ C/L INT AVE J & 30TH ST W MKD (19 20 17 18 T7N R12W RE 5869) N EDGE	CL 2251

QUAD-YEAR	ELEV	DESCRIPTION (INCLUDE QUAD AND YEAR IN DESCRIPTION)	BM NUMBER
LANCASTR (1975)	2340.530	CS MON (N EDGE) IN WELL 12IN DN @ C/L INT AVE J & 35TH ST W MKD (1/4 COR 18 19 T7N R12W RE 5869)	CL 2252
LANCASTR (1975)	2343.367	L&T N CB 8FT W BCR @ NW COR LANCASTER BLVD & 10TH ST W 27FT N & 60FT W C/L INT	CL 22550
LANCASTR (1975)	2350.936	L&BN S CB 3FT W BCR @ SW COR KETTERING ST & DIVISION ST 56FT W & 20FT S C/L INT MKD (BM)	CL 22560
LANCASTR (1975)	2340.683	CS TAG W CB 2FT S BCR @ SW COR SIERRA HWY & JACKMAN ST 37FT S & 30FT W C/L INT	CL 22590
LANCASTR (1975)	2362.418	CS MON (S EDGE) IN WELL 12IN DN @ C/L INT AVE G & PROP 65TH ST W MKD (CO SUR 1/4 COR 34, 3, R13W, T8N, T7N)	CL 2270
LANCASTR (1975)	2371.273	CS MON IN WELL 18IN DN @ C/L INT AVE G & 70TH ST W MKD (CO SUR 33, 34, 4, 3, R13W, T8N, T7N)	CL 2271
LANCASTR (1975)	2373.949	CSBM MON 6IN UP @ NW COR AVE G & 70TH ST W 28FT N & 31FT W C/L INT MKD (BM 119-12 1961)	CL 2272
LANCASTR (1975)	2384.617	CS MON (S EDGE) IN WELL 14IN DN @ C/L INT 75TH ST W & AVE G MKD (CO SUR 1/4 COR 33, 4, R13W, T8N, T7N)	CL 2273
LANCASTR (1975)	2387.347	CSBM MON 8IN UP 27FT N C/L AVE G & 259FT W OF 75TH ST W MKD (BM 119-13 1961)	CL 2274
LANCASTR (1975)	2398.681	CS MON (S EDGE) IN WELL 18IN DN @ C/L INT 80 TH ST W & AVE G MKD (CO SUR 33, 32, 5, 4, T7N, T8N R13W)	CL 2275
LANCASTR (1975)	2401.301	CSBM MON @ NW COR 80TH ST W & AVE G 96FT W & 25FT N C/L INT MKD (BM 119-14 1961)	CL 2276
LANCASTR (1975)	2411.324	CS MON (N EDGE) IN WELL 14IN DN @ C/L INT AVE G & 85TH ST W (PROP) MKD (CO SUR 1/4 COR 32, 5, T7N, T8N R13W)	CL 2277
LANCASTR (1975)	2414.279	CSBM MON 6IN UP 230FT W & 25FT N C/L INT AVE G & 85TH ST W (PROP) MKD (BM 119-15 1961)	CL 2278
LANCASTR (1975)	2442.604	CSBM MON 6IN UP 315FT W & 25FT N C/L INT AVE G & PROP 95TH ST W MKD (119-17 1961)	CL 2280
LANCASTR (1975)	2450.127	CS MON (N EDGE) 6IN DN @ C/L INT AVE G & 100TH ST W (PROP) MKD (36, 31, 1, 6, T8N T7N R13W R14W, RE 5869)	CL 2281
LANCASTR (1975)	2451.956	CSBM MON 8IN UP 25FT N & 180FT W C/L INT AVE G & 100TH ST W (PROP) MKD (BM 119-18 1961)	CL 2282

QUAD-YEAR	ELEV	DESCRIPTION (INCLUDE QUAD AND YEAR IN DESCRIPTION)	BM NUMBER
LANCASTR (1975)	2459.980	CS MON (S EDGE) IN WELL 12IN DN @ C/L INT AVE G & 105TH ST W (PROP) MKD (CO SUR 1/4 COR 36, 1, R14W, T8N, T7N)	CL 2283
LANCASTR (1975)	2464.943	CSBM MON 6IN UP 25FT N & 395FT W C/L INT AVE G & 105TH ST W (PROP) 85FT E PP 430227E MKD (BM 119-19 1961)	CL 2284
LANCASTR (1975)	2359.125	CS MON 12IN DN IN WELL @ C/L INT 30TH ST W & AVE J-8 MKD (CO SUR 1/4 SEC COR 19 20 R12W T7N) N EDGE	CL 2286
LANCASTR (1975)	2301.218	CS MON (W EDGE) IN WELL 24IN DN @ C/L INT AVE F & PROP 10TH ST W MKD (CO SUR 28, 27, 33, 34, T8N, R12W )	CL 2287
LANCASTR (1975)	2303.613	RDBM TAG 2FT E OF W EDGE S HDWL 1.06 25FT S C/L AVE F & 472FT W C/L PROP 10TH ST W	CL 2288
LANCASTR (1975)	2305.134	CSBM MON 8IN UP @ SW COR AVE F & PROP 15TH ST W 42FT W & 40FT S C/L INT MKD (CO SUR BM AVA 14 RE63 )	CL 2290
LANCASTR (1975)	2313.082	CSBM MON @ SE COR AVE F & 25TH ST W 40FT E & 38FT S C/L INT MKD (CO SUR BM AVA 12, RE63)	CL 2293
LANCASTR (1975)	2317.025	CS MON 6IN DN IN WELL @ C/L INT AVE F & 30TH ST W (USE W EDGE) MKD (30, 29, 31, 32, T8N, R12W, RE 5869)	CL 2295
LANCASTR (1975)	2321.762	CSBM MON FL @ SW COR AVE F & 35TH ST W, 40FT W & 39FT S C/L INT MKD AVA 10 CO SUR BM RE63	CL 2296
LANCASTR (1975)	2321.166	BOLT IN CONC 18IN DN IN WELL @ C/L INT AVE F & 35TH ST W	CL 2297
LANCASTR (1975)	2324.376	CS MON (SW COR) IN WELL 8IN DN ON C/L AVE F MI W 35TH ST W @ NE COR FOX AIRFIELD RE5869	CL 2298
LANCASTR (1975)	2325.649	CS MON (N EDGE) IN WELL 18IN DN @ C/L INT AVE F & 40TH ST W MKD (CO SUR 25, 36, 30, 31, R12W, R13W, T8N )	CL 2299
LANCASTR (1975)	2326.081	CSBM MON @ SW COR AVE F & 40TH ST W 34FT S & 34FT W C/L INT MKD (BM 103-7 1957)	CL 2300
LANCASTR (1975)	2332.165	CSBM MON FL ON C/L 45TH ST W 40FT S C/L AVE F MKD (CO SUR BM AVA 8 RE 63)	CL 2301
LANCASTR (1975)	2337.747	CS MON 10IN DN 40FT S & 40FT W C/L INT AVE F & 50TH ST W 36FT W/O W GATE POST TO FOX AIRFIELD MKD ( CO SURV AVA 7 1959 RE 63)	CL 2302

QUAD-YEAR	ELEV	DESCRIPTION (INCLUDE QUAD AND YEAR IN DESCRIPTION)	BM NUMBER
LANCASTR (1975)	2338.554	CSBM MON FL 42FT S & 41FT W C/L INT AVE F & 50TH ST W 37FT W/O GATE POST TO FOX AIRFIELD MKD (BM 103-9A 1962)	CL 2303
LANCASTR (1975)	2344.902	CS MON @ SE COR AVE F & 55TH ST W (PROP) 40FT S & 40FT E C/L INT MKD (CO SUR AVA 6 RE 63)	CL 2304
LANCASTR (1975)	2437.760	L&BN CONC SADDLE OF PIPE @ OLD PUMP HSE ON NE COR 90TH ST W & AVE A-8 40FT N & 53FT E C/L INT MKD (BM)	CL 23160
LANCASTR (1975)	2431.969	CSBM MON 12IN UP ON SE COR AVE A & 90TH ST W 90FT S & 21FT E C/L INT MKD (BM 117-18 1961)	CL 23170
LANCASTR (1975)	2430.346	MON IN WELL 8IN DN @ C/L INT AVE A & 90TH ST W MKD (KERN CO L.A. CO 5 6 31 32 T8N T9N R13W)	CL 23180
LANCASTR (1975)	2443.475	CSBM MON 4IN UP ON SE COR AVE A & 95TH ST W 27FT S & 75FT E C/L INT MKD (BM 117-17 1961)	CL 23190
LANCASTR (1975)	2441.947	CS MON IN WELL 14IN DN @ C/L INT AVE A & 95TH ST W MKD (CO SUR KERN CO L.A. CO 31 6 T8N T9N R13W)	CL 23200
LANCASTR (1975)	2458.022	MON IN WELL 12IN DN @ C/L INT AVE A & 100TH ST W MKD (KERN CO L.A. CO 36 31 1 6 T8N T9N R13W R14W)	CL 23220
LANCASTR (1975)	2472.867	CSBM MON 6IN UP ON SE COR AVE A & 105TH ST W 28FT S & 252FT E C/L INT MKD (BM 117-19 1961)	CL 2323
LANCASTR (1975)	2472.100	CS MON IN WELL 16IN DN @ C/L INT AVE A & 105TH ST W MKD (CO SUR 1/4 COR KERN CO L.A. 36 1 T8N T9N R14W)	CL 2324A
LANCASTR (1975)	2485.640	CSBM MON FLUSH ON SE COR AVE A & 110TH ST W 28FT S & 75FT E C/L INT MKD (BM 117-20 1961)	CL 2325
LANCASTR (1975)	2484.013	CS MON IN WELL 24IN DN @ C/L INT AVE A & 110TH ST W MKD (CO SUR 35 36 2 1 T8N T9N R14W KERN CO L.A. CO) USE S EDGE	CL 2326
LANCASTR (1975)	2487.035	CSBM MON 6IN UP 250FT N & 30FT W C/L INT AVE A-8 & 110TH ST W MKD (BM 119-36 1961)	CL 2327
LANCASTR (1975)	2485.957	CS MON IN WELL 11IN DN @ C/L INT AVE A-8 & 110TH ST W MKD (1/4 COR 2 1 T8N R14W RE 5869) USE S EDGE	CL 2328
LANCASTR (1975)	2482.780	CS MON IN WELL 19IN DN @ C/L INT 110TH ST W & AVE B MKD (CO SUR 2 1 11 12 T8N R14W) USE E EDGE	CL 2329

QUAD-YEAR	ELEV	DESCRIPTION (INCLUDE QUAD AND YEAR IN DESCRIPTION)	BM NUMBER
LANCASTR (1975)	2485.051	CSBM MON 4IN UP ON NE COR AVE B & 110TH ST W 28FT N & 55FT E C/L INT MKD (BM 119-37 1961)	CL 2330
LANCASTR (1975)	2484.255	CS MON IN WELL 15IN DN @ C/L INT 110TH ST W & AVE B-8 MKD (CO SUR 1/4 SEC COR 11 12 T8N R14W) USE S EDGE	CL 2331
LANCASTR (1975)	2483.434	CS MON IN WELL 19IN DN @ C/L INT 110TH ST W & AVE C MKD (CO SUR 11 12 13 14 T8N R14W) S EDGE	CL 2333
LANCASTR (1975)	2486.149	CSBM MON 4IN UP @ SE COR 110TH ST W & AVE C 85FT S & 27FT E C/L INT MKD (BM 119-39 1961)	CL 2334
LANCASTR (1975)	2482.647	CS MON IN WELL 14IN DN @ C/L INT 110TH ST W & AVE C-8 MKD (CO SUR 1/4 SEC COR 14 13 T8N R14W) USE E EDGE	CL 2335
LANCASTR (1975)	2485.601	CSBM MON 6IN UP ON SW COR 110TH ST W & AVE C-8 95FT S & 25FT W C/L INT MKD (BM 119-40 1961)	CL 2336
LANCASTR (1975)	2457.243	CS MON IN WELL 2IN DN @ C/L INT 30TH ST E & FUT AVE L-8 MKD (1/4 COR 31 32 T7N R11W)	CL 2361
LANCASTR (1975)	2444.120	CS MON IN WELL 12IN DN @ C/L INT 30TH ST E & FUT AVE L MKD (30 29 31 32 T7N R11W)	CL 2362
LANCASTR (1975)	2445.727	L&BN CONC FOOTING WATER TANK ON NW COR 30TH ST E & FUT AVE L 35FT N & 30FT W C/L INT MKD (BM)	CL 2363
LANCASTR (1975)	2432.405	CS MON IN WELL 6IN DN @ C/L INT 30TH ST E & FUT AVE K-8 MKD (1/4 SEC COR 30 29 T7N R11W)	CL 2364
LANCASTR (1975)	2421.347	CS MON IN WELL 12IN DN @ C/L INT AVE K & FUT 35TH ST E MKD (CO SUR 1/4 SEC COR 20 29 T7N R11W RE 62) USE W EDGE	CL 2367C
LANCASTR (1975)	2427.024	CS MON IN WELL 15IN DN @ C/L INT AVE K & 40TH ST E MKD (CO SUR 20 21 28 29 R11W T7N 1926) USE NE EDGE	CL 2368C
LANCASTR (1975)	2430.204	CS MON IN WELL 17IN DN @ C/L INT AVE K & 45TH ST E MKD (CO SUR 1/4 COR 21 28 T7N RE 329) USE E EDGE	CL 2369C
LANCASTR (1975)	2433.733	CS MON IN WELL 12IN DN @ C/L INT AVE K & 50TH ST E MKD (CO SUR 21 22 27 28 T7N R11W 1929) S EDGE	CL 2370C
LANCASTR (1975)	2434.599	CS BM MON FL ON NE COR AVE K & 50TH ST E 88FT N & 37FT E C/L INT MKD (BM 120-6 1961)	CL 2371C
LANCASTR (1975)	2434.705	1 1/2IN IP & SPK IN WELL 18IN DN @ C/L INT AVE K & 55TH ST E USE SPK	CL 2372C

QUAD-YEAR	ELEV	DESCRIPTION (INCLUDE QUAD AND YEAR IN DESCRIPTION)	BM NUMBER
LANCASTR (1975)	2441.048	CS MON IN WELL 18IN DN @ C/L INT AVE K & 60TH ST E MKD (CO SUR 22 23 26 27 T7N R11 W 1927)	CL 23730
LANCASTR (1975)	2443.346	L&BN CONC SLAB 75FT N & 90FT W C/L INT AVE K & 65TH ST E MKD (BM)	CL 23740
LANCASTR (1975)	2444.690	L&BN IN SW COR OF CONC FOUNDATION ON NE COR AVE K & 70TH ST E 75FT N & 69FT E/O C/L INT MKD (BM)	CL 23750
LANCASTR (1975)	2432.439	L&BN CONC SLAB 75FT N & 120FT W C/L INT 70TH ST E & AVE J-8 MKD (BM)	CL 23760
LANCASTR (1975)	2418.335	RDBM MON IN WELL 8IN DN ON SW COR AVE J & 70TH ST E 40TH S & 55FT W C/L INT 2IN IP MKR 3FT UP 2FT S MKD (196)	CL 23770
LANCASTR (1975)	2408.115	2IN IP & CS TAG IN WELL 14IN DN @ C/L INT 70TH ST E & AVE I-8 ( USE NW EDGE)	CL 23780
LANCASTR (1975)	2326.497	CSBM MON 6IN UP ON NE COR FUT AVE E-8 & 50TH ST E 82FT N & 35FT E C/L INT MKD (BM 120-17 1961)	CL 24460
LANCASTR (1975)	2333.318	USC&GS MON 4IN UP ON NE COR 50TH ST E & AVE F 55FT E & 20FT N C/L INT MKD (K 1154 1961)	CL 24480
LANCASTR (1975)	2339.944	CSBM MON IN CONC 3IN UP ON NW COR FUT AVE F-8 & 50TH ST E 260FT N & 30FT W C/L INT MKD (BM 120- 15 1961)	CL 24500
LANCASTR (1975)	2339.035	CS MON (S EDGE) IN WELL 24IN DN @ C/L INT FUT AVE F-8 & 50TH ST E MKD (1/4 COR 33 34 R11W T8N)	CL 24510
LANCASTR (1975)	2316.782	CSBM MON 6IN UP @ SE COR AVE F & 30TH ST W 40FT E & 39FT S/O C/L INT MKD (CO SUR BM RE 63 AVA 11)	CL 2452
LANCASTR (1975)	2317.582	PM NE RIM 2IN IP WITH CONC PLUG & CS TAG 3IN UP ON SE COR 30TH ST W & AVE F-8 50FT S & 50FT E C/L INT	CL 2454
LANCASTR (1975)	2317.119	PM N RIM 2IN IP WITH CONC PLUG & CS TAG 6IN DN ON NW COR 30TH ST W & FUT AVE G 50FT N & 50FT W C/L INT	CL 2455
LANCASTR (1975)	2314.017	CS MON IN WELL 14IN DN @ C/L INT 30TH ST W & AVE H MKD (CO SUR 5, 6, 7, 8, R12W, T7N)	CL 2459
LANCASTR (1975)	2315.182	PM NW RIM 2IN IP CONC PL & CS TAG FLUSH ON SE COR 30TH ST W & AVE H 63FT S & 63FT E C/L INT	CL 2460
LANCASTR (1975)	2317.967	L&T W END S HDWL BRIDGE NO. 53-406 20 FT S/O C/L AVE I & 100 FT E/O C/L 30TH ST W	CL 2463

QUAD-YEAR	ELEV	DESCRIPTION (INCLUDE QUAD AND YEAR IN DESCRIPTION)	BM NUMBER
LANCASTR (1975)	2367.260	CSBM MON 6IN UP 22FT E/O C/L 70TH ST W & 310FT S C/L FUT AVE F-8 MKD (BM 119-11 1961) 2IN IP 2FT UP 2FT W	CL 2464
LANCASTR (1975)	2367.590	PM N RIM 1 1/2IN IP WITH CONC PLUG & BRAD FLUSH ON SW COR 70TH ST W & FUT AVE F-8 50FT S & 50FT W C/L INT	CL 2465
LANCASTR (1975)	2368.397	PM S RIM 1 1/2IN IP WITH CONC PLUG & BRAD FLUSH ON NE COR 70TH ST W & FUT AVE F-8 50FT N & 50FT E C/L INT	CL 2466
LANCASTR (1975)	2372.134	CSBM MON 4IN UP ON SW COR 70TH ST W & AVE F 66FT S & 34FT W C/L INT MKD (BM 119-10 1961) 2IN IP 3FT UP 2FT E	CL 2467
LANCASTR (1975)	2379.737	PM NE RIM 1 1/2IN IP WITH CONC PLUG & BRAD 3IN UP ON NE COR AVE F & FUT 75TH ST W 50FT N & 50FT E C/L INT	CL 2468
LANCASTR (1975)	2387.484	CS MON IN WELL 12IN DN @ C/L INT AVE F & 80TH ST W MKD (SEC COR 28 29 32 33 R13W T8N)	CL 2470
LANCASTR (1975)	2388.715	PM W RIM 1 1/2IN IP WITH CONC PLUG & BRAD 2IN UP ON NW COR AVE F & 80TH ST W 50FT N & 50FT W C/L INT	CL 2471
LANCASTR (1975)	2388.991	CS MON IN WELL 8IN DN @ C/L INT 80TH ST W & AVE E-8 MKD (1/4 COR 29 28 R13W T8N)	CL 2472
LANCASTR (1975)	2387.642	PM S RIM 1 1/2IN IP CONC PLUG & BRAD FLUSH ON NE COR 80TH ST W & AVE E-8 50FT N & 50FT E C/L INT	CL 2473
LANCASTR (1975)	2404.266	CS MON IN WELL 8IN DN @ C/L INT AVE E & 80TH ST W MKD (SEC COR 20 21 28 29 R13W T8N)	CL 2474
LANCASTR (1975)	2416.744	CS MON IN WELL 10IN DN @ C/L INT AVE D-8 & 80TH ST W MKD (1/4 COR 20 21 R13W T8N)	CL 2475
LANCASTR (1975)	2366.692	L&T N CB 6FT E BCR @ NE COR AVE J & FIG AVE 40FT N & 40FT E C/L INT	CL 27120
LANCASTR (1975)	2365.036	L&BRAD 10FT S BCR @ SW COR AVE J & HARDWOOD AVE 76FT S & 20FT W C/L INT (RDBM TAG MISSING) INT	CL 27130
BASELINE (1973)	2491.252	2IN IP (SE EDGE CONC PLUG & CS TAG 2IN DN @ NW COR 70TH ST E & PROP AVE M 50FT N & 50FT W C/L INT	CL 2760
BASELINE (1973)	2520.884	CS MON IN WELL 21IN DN @ C/L INT AVE M & 20TH ST W MKD (CO SUR 32 33 4 5 T6N T7N R12W 1928)	CL 3196



QUAD-YEAR	ELEV	DESCRIPTION (INCLUDE QUAD AND YEAR IN DESCRIPTION)	BM NUMBER
BASELINE (1973)	2531.268	CSBM MON N CB AVE M 40FT N C/L & 173FT E C/L FUT CL 5TH ST W MKD (BM 104-1A 1967)	3197
BASELINE (1973)	2471.604	CS MON IN WELL 8IN DN @ C/L INT AVE M & 40TH ST E MKD (SEC COR 32 33 5 4 T7N T6N R11W)	3198
BASELINE (1973)	2485.840	CS MON IN WELL 8IN DN @ C/L INT FUT AVE M & 60TH ST E MKD (SEC COR 34 35 3 2 T7N T6N R11W)	3199
BASELINE (1973)	2491.724	CS MON IN WELL 10IN DN @ C/L INT 70TH ST E & FUT AVE M MKD ( 35 36 2 1 T6N T7N R11W RE 5869) R11W)	3200
LANCASTR (1975)	2419.467	MON IN WELL 16IN DN @ C/L INT AVE A & 85TH ST W MKD (KERN CO L.A. CO 5 32 T8N T9N R13W)	3201
LANCASTR (1975)	2421.167	L&T E EDGE DRWY TO HSE ON NE COR AVE A & 85TH ST W 55FT N & 180FT E C/L INT MKD (BM)	3202
LANCASTR (1975)	2411.994	MON IN WELL 17IN DN @ C/L INT AVE A & 80TH ST W MKD (KERN CO L.A. CO 4 5 32 33 T8N T9N R13W)	3203
LANCASTR (1975)	2413.223	CSBM MON 6IN UP ON SE COR AVE A & 80TH ST W 26FT S & 110FT E C/L INT MKD (BM 117-14 1961)	3204
LANCASTR (1975)	2403.618	MON IN WELL 26IN DN @ C/L INT AVE A & 75TH ST W MKD (KERN CO L.A. CO 33 4 T8N T9N R13W)	3205
LANCASTR (1975)	2406.367	CSBM MON 6IN UP ON POLE LINE 100FT S C/L INT AVE A & 75TH ST W MKD (BM 117-13 1961)	3206
LANCASTR (1975)	2395.738	MON IN WELL 20IN DN @ C/L INT AVE A & 70TH ST W MKD (KERN CO L.A. CO 3 4 33 34 T8N T9N R13W) USE W EDGE	3207
LANCASTR (1975)	2399.201	CSBM MON 8IN UP ON SW COR AVE A & 70TH ST W 115FT S & 30FT W C/L INT MKD (BM 117-12 1961)	3208
LANCASTR (1975)	2388.581	CSBM MON 4IN UP ON SW COR AVE A & 65TH ST W 30FT S & 94FT W C/L INT MKD (BM 117-11 1961)	3209
LANCASTR (1975)	2386.950	CS MON IN WELL 10IN DN @ C/L INT AVE A & 65TH ST W MKD ( 3 34 T8N T9N R13W RE 5869)	3210
LANCASTR (1975)	2319.676	CSBM MON 6IN UP 33FT S C/L AVE A & 275FT E PROP 25TH ST W MKD (BM 117-2B 1967)	3211
LANCASTR (1975)	2389.269	CS MON IN WELL 8IN DN @ C/L INT 30TH ST E & LANCASTER BLVD MKD (CO SUR 1/4 COR 18 17 T7N R11W 1928 ) USE N EDGE	3213

QUAD-YEAR	ELEV	DESCRIPTION (INCLUDE QUAD AND YEAR IN DESCRIPTION)	BM NUMBER
LANCASTR (1975)	2389.987	RDBM MON IN WELL 90FT S & 35FT E C/L INT 30TH ST E & LANCASTER BLVD (1968)	CL 32140
LANCASTR (1975)	2399.735	L&T IN CONC RET WALL @ NW COR AVE J & 30TH ST E 30FT N & 32FT W/O C/L INT	CL 32150
LANCASTR (1975)	2401.088	RDBM MON IN WELL 70FT S & 33FT E C/L INT AVE J & 30TH ST E MKD (1968)	CL 32160
LANCASTR (1975)	2408.294	CS MON (N EDGE) IN WELL 14IN DN @ C/L INT 30TH ST E & AVE J-8 MKD (1/4 COR 19 20 T7N R11W)	CL 32170
LANCASTR (1975)	2410.143	2IN IP (E EDGE) & CS TAG 3IN UP @ SW COR 30TH ST E & AVE J-8 50FT S & 50FT W C/L INT	CL 32180
LANCASTR (1975)	2434.304	L&BN IN TOP STANDPIPE 33FT W C/L 30TH ST E & 205FT N AVE K-8 MKD (BM)	CL 3219
LANCASTR (1975)	2433.863	CS MON (S EDGE) IN WELL 8IN DN @ C/L INT AVE K & FUT 15TH ST E MKD (1/4 COR 24 25 T7N R12W RE5869)	CL 3220
LANCASTR (1975)	2437.113	CSBM MON 2IN UP 97FT E & 32FT S C/L INT 15TH ST E & AVE K MKD (BM 105-11 1958)	CL 3221
LANCASTR (1975)	2428.072	2IN IP (N EDGE) & CE TAG 2IN UP @ SW COR AVE K & 20TH ST E 50FT S & 50FT W C/L INT	CL 3222
LANCASTR (1975)	2426.972	CS MON (S EDGE) IN WELL 15IN DN @ C/L INT AVE K & 20TH ST E MKD (SEC COR 19 24 25 30 T7N R12W R11W)	CL 3223
LANCASTR (1975)	2419.002	2IN IP (S EDGE) & CS TAG 3IN UP 50FT N & 50FT W C/L INT 25TH ST E & AVE K	CL 3224
LANCASTR (1975)	2418.231	CS MON IN WELL 9IN DN @ C/L INT AVE K & 25TH ST E MKD (1/4 COR 19 30 T7N R11W RE 5869)	CL 3225
LANCASTR (1975)	2421.726	RD BM IN WELL 25FT N & 315FT E C/L INT AVE K & 35TH ST E MKD (1968)	CL 32260
LANCASTR (1975)	2428.224	L&BN IN CONC FOOTING OF FENCE @ SE COR AVE K & 40TH ST E 60FT S & 61FT E C/L INT MKD (BM)	CL 32270
LANCASTR (1975)	2430.978	RDBM MON IN WELL 24FT N C/L AVE K & 303FT E FUT 45TH ST E 5FT W PP NO 536333E) MKD 1968	CL 32280
LANCASTR (1975)	2435.937	RDBM MON IN WELL 51FT W & 24FT N C/L INT AVE K & 55TH ST E 5FT W PP NO 938251E MKD (1968)	CL 32290
LANCASTR (1975)	2442.467	RDBM MON IN WELL 24FT N & 40FT W C/L INT AVE K & FUT 65TH ST E 4FT S 36IN STANDPIPE MKD (1968)	CL 32310

QUAD-YEAR	ELEV	DESCRIPTION (INCLUDE QUAD AND YEAR IN DESCRIPTION)	BM NUMBER
LANCASTR (1975)	2447.955	CS MON IN WELL 15IN DN @ C/L INT AVE K & FUT 75TH ST E MKD (CO SUR 1/4 COR 24 25 T7N R11W RE 329) N EDGE	CL 32330
LANCASTR (1975)	2447.903	RDBM MON IN WELL 25FT N & 138FT E C/L INT AVE K & FUT 75TH ST E 5FT W PP NO K 10483Y MKD (1968)	CL 32340
LANCASTR (1975)	2453.636	CS MON (S EDGE) IN WELL 16IN DN @ C/L INT AVE K & 80TH ST E MKD (CO SUR 24 25 19 30 T7N R11W R10W)	CL 32350
LANCASTR (1975)	2455.868	RDBM MON IN WELL 27FT N C/L AVE K & 174FT E 80TH ST E MKD (1961)	CL 32360
LANCASTR (1975)	2469.950	L&T E SIDE CONC BASE VENT PIPE 33FT N C/L AVE K & 0.5MI E 80TH ST E OPP ENT TO RANCH 11FT E PP 1309682E	CL 32370
LANCASTR (1975)	2470.958	RDBM MON IN WELL 25FT N C/L AVE K & 0.5MI E 80TH ST E 5FT W PP NO K10463Y MKD (1968)	CL 32380
LANCASTR (1975)	2349.848	L&BN CONC CB OF PARKING LOT ON SE COR AVE I & 60TH ST W 48FT S & 66FT E C/L INT MKD (BM)	CL 3239
LANCASTR (1975)	2351.696	CS MON IN WELL 16IN DN @ C/L INT 60TH ST W & PROP AVE H-8 MKD (1/4 COR 10, 11, T7N R13W CO SUR RE 62)	CL 3240
LANCASTR (1975)	2335.755	CS MON IN WELL 18IN DN @ C/L INT 60TH ST E & AVE F MKD (CO SUR 26 27 34 35 T8N R11W) W EDGE	CL 32430
LANCASTR (1975)	2449.648	X E EDGE 2IN IP 2IN UP ON SE COR AVE D & 95TH ST W 37FT S & 4FT E C/L INT	CL 3244
LANCASTR (1975)	2324.095	CHIS X SE COR BOLT OF GAS RISER ON NE COR AVE D & 30TH ST W 40FT N & 60FT E C/L INT	CL 3245
LANCASTR (1975)	2366.099	CSBM MON FLUSH 65FT N & 34FT E C/L INT AVE I & 15TH ST E MKD (BM 105-17 1958 RE5869)	CL 3246
LANCASTR (1975)	2375.548	RDBM TAG N CB AVE I 3FT E OF END 40FT N & 5FT E C/L INT AVE I & PROP 25TH ST E	CL 3247
LANCASTR (1975)	2381.565	CS MON (W EDGE) IN WELL 10IN DN @ C/L INT AVE I & 40TH ST E MKD (8 9 17 16 T7N R11W)	CL 32490
LANCASTR (1975)	2386.373	CS MON (E EDGE) IN WELL @ C/L INT AVE I & 50TH ST E MKD (9 10 16 15 T7N R11W)	CL 32500
LANCASTR (1975)	2397.734	CS MON (E EDGE) IN WELL 6IN DN @ C/L INT AVE I & 70TH ST E MKD (SEC COR 11 12 14 13 T7N R11W)	CL 32520

QUAD-YEAR	ELEV	DESCRIPTION (INCLUDE QUAD AND YEAR IN DESCRIPTION)	BM NUMBER
LANCASTR (1975)	2370.523	CS MON (E EDGE) @ C/L INT AVE F & 70TH ST W MKD (SEC COR 28 27 33 34 T8N R13W)	CL 3253
LANCASTR (1975)	2379.415	CS MON (S EDGE) IN WELL 6IN DN @ C/L INT 75TH ST W & AVE F MKD (1/4 COR 28 33 T8N R13W)	CL 3254
LANCASTR (1975)	2418.375	USGS MON 3IN UP ON C/L AVE E-14 40FT W C/L 90TH ST W MKD (R 42 1929 RESET 1958)	CL 3255
LANCASTR (1975)	2409.334	2IN IP (E EDGE) & CS TAG FL ON SE COR 70TH ST E & FUT AVE I-8 45FT E & 52FT S C/L INT	CL 3256
LANCASTR (1975)	2417.580	CS MON IN WELL 12IN DN @ C/L INT 70TH ST E & AVE J MKD (14 13 23 24 T7N R11W) USE W EDGE	CL 3257
LANCASTR (1975)	2432.599	2IN IP & CS TAG 3IN UP ON SE COR 70TH ST E & FUT AVE J-8 48FT S & 45FT E C/L INT USE N EDGE	CL 3258
LANCASTR (1975)	2459.691	2IN IP (E EDGE) 3IN UP @ NW COR 70TH ST E & FUT AVE K-8 50FT N & 50FT W/O C/L INT (LYING WEST)	CL 3259
LANCASTR (1975)	2458.045	CS MON IN WELL 18IN DN @ C/L INT 70TH ST E & FUT AVE K-8 MKD (CO SUR 1/4 COR 26 25 T7N R11W 1929) USE N EDGE	CL 3260
LANCASTR (1975)	2480.954	CS MON IN WELL 12IN DN @ C/L INT 70TH ST E & FUT AVE L-8 MKD (CO SUR 1/4 COR 35 36 T7N R11W RE 63)	CL 3263
LANCASTR (1975)	2484.844	2IN IP (N EDGE) & CS TAG FLUSH @ SE COR 70TH ST E & FUT AVE L-8 40FT S & 40FT E C/L INT	CL 3264
LANCASTR (1975)	2316.524	RDBM MON IN WELL 8IN DN ON SW COR 30TH ST W & PROP AVE G-8 63FT W & 57FT S C/L INT 2IN IP 3FT UP 2 FT W MKD (1968)	CL 3266
LANCASTR (1975)	2316.747	RDBM MON IN WELL 8IN DN ON NW COR 30TH ST W & PROP AVE G-8 63FT W & 57FT N C/L INT 2IN IP 3FT UP 2 FT W MKD (1968)	CL 3267
LANCASTR (1975)	2352.267	RDBM MON IN WELL ON SW COR 60TH ST E & AVE G 34FT W & 25FT S C/L INT MKD (1968)	CL 3268
LANCASTR (1975)	2371.009	RD BM MON IN WELL ON SW COR 60TH ST E & AVE H 30FT W & 24FT S C/L INT 3FT W PP NO 538332E MKD (1968)	CL 3269
LANCASTR (1975)	2398.891	CSBM MON 2IN UP ON NW COR 50TH ST E & LANCASTER BLVD 157FT N & 48FT W C/L INT MKD (BM 120-9A 1966)	CL 3270

QUAD-YEAR	ELEV	DESCRIPTION (INCLUDE QUAD AND YEAR IN DESCRIPTION)	BM NUMBER
LANCASTR (1975)	2397.629	CS MON (W EDGE) IN WELL 22IN DN @ C/L INT 50TH ST E & LANCASTER BLVD MKD (1/4 COR 16 15 T7N R11W)	CL 32710
LANCASTR (1975)	2414.685	CS MON (E EDGE) IN WELL 21IN DN @ C/L INT 50TH ST E & AVE J MKD (SEC COR 16 15 21 22 T7N R11W)	CL 32720
LANCASTR (1975)	2417.503	CSBM MON 24IN UP ON SE COR 50TH ST E & AVE J 127FT S & 48FT E C/L INT MKD (BM 120-8 1961)	CL 32730
LANCASTR (1975)	2424.975	2IN IP & SPK IN WELL 8IN DN @ C/L INT 50TH ST E & FUT AVE J-8	CL 32740
LANCASTR (1975)	2426.124	CSBM MON DN 6IN ON SW COR 50TH ST E & FUT AVE J-8 114FT S & 40FT W/O C/L INT MKD (BM 120-7 1961)	CL 32750
LANCASTR (1975)	2446.984	CSBM MON 4IN UP ON SE COR 50TH ST E & FUT AVE K-8 79FT S & 36FT E C/L INT MKD (BM 120-5 1961)	CL 32770
LANCASTR (1975)	2453.942	RDBM MON ON NW COR 50TH ST E & AVE L 81FT N & 40FT W C/L INT 6FT S PP 800540E	CL 32780
LANCASTR (1975)	2454.512	CS MON (W EDGE) IN WELL 15IN DN @ C/L INT 50TH ST E & AVE L MKD (SEC COR 28 27 33 34 T7N R11W)	CL 32790
LANCASTR (1975)	2464.905	CS MON (N EDGE) IN WELL 28IN DN @ C/L INT 50TH ST E & FUT AVE L-8 MKD (1/4 COR 33 34 T7N R11W)	CL 3280A
LANCASTR (1975)	2467.266	CSBM MON 8IN UP ON SE COR 50TH ST E & FUT AVE L-8 40FT S & 32FT E C/L INT MKD (BM 120-3 1961)	CL 3281
LANCASTR (1975)	2520.118	CS MON IN WELL 12IN DN @ C/L INT AVE K & 95TH ST W MKD (1/4 COR 19 30 T7N R13W)	CL 3282
LANCASTR (1975)	2349.572	RDBM MON IN WELL ON SW COR AVE G & FUT 55TH ST E 45FT W & 23FT S C/L INT 6FT W PP NO 1786549E MKD (1968)	CL 32830
LANCASTR (1975)	2346.362	CS MON IN WELL 22IN DN @ C/L INT AVE G & FUT 45TH ST E MKD (CO SUR 1/4 SEC COR 33 4 T7N T8N R11W) E EDGE	CL 32840
LANCASTR (1975)	2348.135	2IN IP & CS TAG 6IN UP ON SW COR AVE G & FUT 45TH ST E 50FT W & 50FT S/O C/L INT (USE CTR)	CL 32850
LANCASTR (1975)	2345.990	RDBM MON ON NW COR AVE G & 40TH ST E 30FT W & 55FT N C/L INT MKD (1966)	CL 32860
LANCASTR (1975)	2346.034	CS MON (W EDGE) IN WELL 8IN DN @ C/L INT AVE G & FUT 35TH ST E MKD (1/4 COR 32 5 T7N T8N R11W RE 5869)	CL 32870

QUAD-YEAR	ELEV	DESCRIPTION (INCLUDE QUAD AND YEAR IN DESCRIPTION)	BM NUMBER
LANCASTR (1975)	2345.979	CHIS X ON S EDGE 2IN IP WITH CS TAG 6IN UP ON SW CL COR AVE G & FUT 35TH ST E 50FT S & 50FT W/O C/L INT	32880
LANCASTR (1975)	2339.721	CS MON IN WELL 24IN DN @ C/L INT AVE G & 25TH ST CL E MKD (CO SUR 1/4 COR 31 6 T7N T8N R11W)	3289
LANCASTR (1975)	2341.461	CHIS X ON E EDGE 2IN IP WITH CS TAG 4IN UP ON SW CL COR AVE G & 25TH ST E 50FT S & 50FT W/O C/L INT	3290
LANCASTR (1975)	2334.908	CS MON N EDGE 28IN DN @ C/L INT AVE G & 20TH ST CL E MKD (CO SUR 36 31 1 6 T7N T8N R11W R12W)	3291
LANCASTR (1975)	2337.711	2IN IP & CS TAG 6IN UP ON SW COR 20TH ST E & AVE CL G 50FT S & 50FT W/O C/L INT	3292
LANCASTR (1975)	2333.039	CHIS X S EDGE 2IN IP CONC PLUG & CS TAG 6IN UP CL ON SE COR AVE G & FUT 15TH ST E 50FT S & 50FT E/O C/L INT )	3293
LANCASTR (1975)	2331.800	CS MON (E EDGE) 17IN DN @ C/L INT AVE G & FUT CL 15TH ST E MKD (1/4 COR 36 1 T7N T8N R12W RE 5869)	3294
LANCASTR (1975)	2330.225	2IN IP CONC PLUG & CS TAG 6IN UP ON SW COR AVE G CL & 10TH ST E 50FT S & 50FT W/O C/L INT	3296
LANCASTR (1975)	2328.429	2IN IP CONC PLUG & NAIL 50FT N & 50FT E/O C/L INT CL AVE G & 5TH ST E USE PM NE EDGE	3297
LANCASTR (1975)	2380.561	L&BN CONC COLLAR OF FIRE HYD @ SW COR AVE K & CL 45TH ST W 36FT S & 60FT W C/L INT MKD (RD)	3299
LANCASTR (1975)	2387.370	L&T 1FT W BCR @ NW COR AVE K & 30TH ST W 40FT N CL & 67FT W C/L INT	3300
LANCASTR (1975)	2387.186	CS MON IN WELL 6IN DN @ C/L INT AVE K & 20TH ST CL W MKD (20 21 28 29 T7N R12W RE 5869) N EDGE	3301
LANCASTR (1975)	2326.468	CS MON (S EDGE) IN WELL 10IN DN @ C/L INT 50TH CL ST E & FUT AVE E-8 MKD (27 28 T8N R11W)	33020
LANCASTR (1975)	2332.864	CS MON (W EDGE) IN WELL 10IN DN @ C/L INT 50TH CL ST E & AVE F MKD (SEC COR 33 34 27 28 T8N R11W)	33030
LANCASTR (1975)	2358.491	CS MON 9IN DN IN WELL @ C/L INT 20TH ST W & AVE CL J-8 MKD (1/4 SEC COR 20 21 T7N R12W RE 5869) W EDGE	3305
LANCASTR (1975)	2331.564	RDBM TAG IN CB @ END CULDESAC DN SW COR 20TH ST CL W & LANCASTER BLVD 63FT S & 68FT W C/L INT	33070

QUAD-YEAR	ELEV	DESCRIPTION (INCLUDE QUAD AND YEAR IN DESCRIPTION)	BM NUMBER
LANCASTR (1975)	2331.653	CS MON (E EDGE) IN WELL 6IN DN @ C/L INT 20TH ST W & LANCASTER BLVD MKD (1/4 COR 16 17 T7N R12W RE 5869)	CL 3308
LANCASTR (1975)	2326.661	CS MON (W EDGE) IN WELL 10IN DN @ C/L INT AVE I & 40TH ST W MKD (12, 7, 13, 18, T7N, R12W, R13W RE5869)	CL 3309
LANCASTR (1975)	2316.362	1-1/2IN IP 8IN DN ON SE COR 30TH ST W & FUT AVE E-8, 60FT S & 60 FT E/O C/L INT	CL 3311
LANCASTR (1975)	2316.202	L&BN CONC APRON OF GARAGE 160FT E C/L 30TH ST W & 250FT N C/L FUT AVE E-8 MKD (BM)	CL 3312
LANCASTR (1975)	2315.339	RD BM MON IN WELL MKD (1966) 8 IN DN ON SE COR 30TH ST W & AVE E 78FT S & 78 FT E/O C/L INT 2IN IP 3FT UP 2FT E	CL 3313
LANCASTR (1975)	2314.797	1-1/2IN IP 8IN DN ON SW COR 30TH ST W & FUT AVE D-8, 51FT S & 51FT W/O C/L INT	CL 3314
LANCASTR (1975)	2314.670	1 1/2 IN IP 15 IN DN ON NE COR 30TH ST W & FUT AVE D-8 55FT N & 55FT E/O C/L INT	CL 3315
LANCASTR (1975)	2326.758	2IN IP 6IN UP 50FT E/O C/L 30TH ST W ON C/L FUT AVE C-8	CL 3316
LANCASTR (1975)	2328.016	2IN IP 6IN UP ON SE COR AVE C & 30TH ST W 50FT S & 50FT E C/L INT	CL 3317
LANCASTR (1975)	2326.622	1 1/2 IP 12IN DN ON SW COR AVE C & 30TH ST W 50FT S & 50FT W C/L INT	CL 3318
LANCASTR (1975)	2328.010	2IN IP 4IN UP ON SW COR AVE A-8 & 30TH ST W 40FT S & 50FT W C/L INT	CL 3322
LANCASTR (1975)	2644.890	RDBM MON IN WELL ON NW COR AVE K & FUT 105TH ST W 47FT N & 45FT W C/L INT	CL 3323
LANCASTR (1975)	2644.118	CS MON (E EDGE) IN WELL 10IN DN @ C/L INT AVE K & FUT 105TH ST W MKD (1/4 COR 24 25 T7N R14W)	CL 3324
LANCASTR (1975)	2377.801	RDBM MON IN WELL 149FT W & 31FT S C/L INT AVE K & FUT 65TH ST W	CL 3325
LANCASTR (1975)	2376.761	CS MON (N EDGE) IN WELL 8IN DN @ C/L INT AVE K & FUT 65TH ST W MKD (1/4 COR 22 27 T7N R13W)	CL 3326
LANCASTR (1975)	2386.804	CS MON (S EDGE) IN WELL 8IN DN @ C/L INT AVE K & 60TH ST W MKD (SEC COR 22 23 26 27 T7N R13W)	CL 3327

QUAD-YEAR	ELEV	DESCRIPTION (INCLUDE QUAD AND YEAR IN DESCRIPTION)	BM NUMBER
LANCASTR (1975)	2388.121	RDBM TAG NE COR CONC BASE OF FIRE HYD @ SE COR AVE K & 60TH ST W 75FT S & 50FT E C/L INT	CL 3328
LANCASTR (1975)	2387.055	X ON S EDGE OF 2IN IP WITH CE TAG 2IN UP ON NW COR AVE K & FUT 55TH ST W 50FT N & 50FT W C/L INT	CL 3329
LANCASTR (1975)	2385.016	CS MON (N EDGE) IN WELL 17IN DN @ C/L INT AVE K & FUT 55TH ST W MKD (1/4 COR 23 26 T7N R13W)	CL 3330
LANCASTR (1975)	2544.953	L&BN CONC & ROCK HDWL ON SE COR 90TH ST W & AVE K-8, 117FT S & 28FT E/O C/L INT MKD (BM)	CL 3332
LANCASTR (1975)	2640.536	USC&GS MON FLUSH ON NE COR 90TH ST W & AVE L 60FT N & 25 FT E/O C/L INT MKD (BM Y 1044 1960)	CL 3333
LANCASTR (1975)	2351.062	R D MON IN WELL 8IN DN @ C/L INT SIERRA HWY & LANCASTER BLVD MKD (1960)	CL 3337C
LANCASTR (1975)	2583.764	LA CS BM MON 24IN UP 34FT E C/L INT 110TH ST W & 8FT N C/L FUT AVE J-8 MKD (BM 119-26 1961) 3FT UP 2FT SW	CL 3632
LANCASTR (1975)	2537.040	USC&GS REF MON 2IN UP 41FT S & 107FT W C/L INT 110TH ST W & AVE J MKD(SUR 2 NO 5 1968)	CL 3635
LANCASTR (1975)	2487.654	CSBM 6IN UP 87FT S/O C/L AVE D & 30FT W/O C/L 110TH ST W MKD (BM 119-41 1961) 2IN IP 3FT UP 2FT E	CL 3636
LANCASTR (1975)	2337.006	LA CS MON IN WELL 6IN DN @ C/L INT AVE E & 85TH ST E MKD (1/4 COR 19 30 T8N R10W RE 5869) USE E EDGE	CL 3640C
LANCASTR (1975)	2337.426	LACS BM MON 3IN UP 55FT N & 5FT W/O C/L INT AVE E & 85TH ST E MKD (BM 106-123 1959)	CL 3641C
LANCASTR (1975)	2334.873	LACS BM MON FL 25FT S & 27FT E C/L INT AVE E & 80TH ST E MKD (BM 106-124 1959)	CL 3642C
LANCASTR (1975)	2333.359	LA CS MON IN WELL 14IN DN @ C/L INT AVE E & 80TH ST E MKD (CO SUR 24 19 25 30 T8N R10W R11W) N EDGE	CL 3643C
LANCASTR (1975)	2332.159	LA CS BM MON 12IN UP 61FT S & 20FT E C/L INT AVE E & 75TH ST E MKD (BM 106 125 1959)	CL 3644C
LANCASTR (1975)	2330.509	LA CS MON IN WELL 12IN DN @ C/L INT AVE E & 75TH ST E MKD (24 25 T8N R11W RE 5869)USE N EDGE	CL 3645C
LANCASTR (1975)	2328.604	LACS BM MON FL 65FT S & 18FT E C/L INT AVE E & 70TH ST E MKD (BM 106-126 1959)	CL 3646C



QUAD-YEAR	ELEV	DESCRIPTION (INCLUDE QUAD AND YEAR IN DESCRIPTION)	BM NUMBER
LANCASTR (1975)	2326.593	LA CS MON IN WELL 20IN DN @ C/L INT AVE E & 70TH ST E MKD (CO SUR 23 24 26 27 T8N R11W) USE W EDGE	CL 36470
LANCASTR (1975)	2327.117	LA CS BM MON 12IN UP 45FT N & 20FT E C/L INT AVE E & 20FT E C/L INT AVE E & 65TH ST E MKD (BM 106 127 1959)	CL 36480
LANCASTR (1975)	2325.293	LACS MON IN WELL 18IN DN @ C/L INT AVE E & 65TH ST E MKD (CO SUR 1/4 SEC COR 23 18 T8N R11W) USE SE EDGE	CL 36490
LANCASTR (1975)	2315.817	2IN IP PLUG & CS TAG 4IN UP 50FT N & 50FT W C/L INT AVE E & 45TH ST E (PROP)	CL 3650
LANCASTR (1975)	2308.138	LACS MON IN WELL 10IN DN ON C/L INT AVE E & 20TH ST E MKD (CO SUR 24 19 25 30 T8N R11W R12W 1925) N EDGE	CL 3651
LANCASTR (1975)	2309.352	LACS BM MON FL 43FT S & 210FT W C/L INT AVE E & 20TH ST E (PROP) MKD (BM 106-136A 1966)	CL 3652
LANCASTR (1975)	2331.588	LACS MON IN WELL 10IN DN @ C/L INT AVE F & 45TH ST W (PROP) MKD (T8N, R13W, 25, 36, RE5869)	CL 3653
LANCASTR (1975)	2344.781	LACS MON IN WELL 8IN DN @ C/L INT AVE F & 55TH ST W PROP MKD (1/4 COR 26, 35, R13W, T8N, RE5869)	CL 3654
LANCASTR (1975)	2312.691	LACS MON IN WELL 8IN DN @ C/L INT AVE F & 25TH ST W MKD (29, 32, R12W, T8N, RE 5869) USE E EDGE	CL 3655
LANCASTR (1975)	2304.538	LACS MON IN WELL 8IN DN @ C/L INT AVE F & 15TH ST W PROP MKD (1/4 COR 28, 33, T8N, R12W)	CL 3656
LANCASTR (1975)	2357.681	2IN IP & LACS TAG 6IN UP, 55FT S & 40FT E C/L INT AVE I & 65TH ST W PROP	CL 3658
LANCASTR (1975)	2317.466	USC & GS MON @ E END OF BRIDGE NO. 53-406, 112FT E & 21 FT N/O C/L INT AVE I & 30TH ST W MKD (X 1219 1971)	CL 3659
LANCASTR (1975)	2403.306	RDBM TAG IN N SIDE CONC BASE OLD WATER WELL 63FT N & 24FT W C/L INT AVE I & 75TH ST E	CL 36610
LANCASTR (1975)	2381.540	L & T 2FT N BCR INTO RETURN 66FT S & 30FT E C/L INT AVE J & DIVISION ST	CL 36620
LANCASTR (1975)	2419.176	RDBM MON IN WELL 65FT N & 28FT E C/L INT 30TH ST E & AVE K MKD(BM 1972)	CL 3663
LANCASTR (1975)	2442.104	RDBM TAG IN TOP OF CONC & RUBBLE WALL 37FT N & 117FT E C/L INT AVE K & 60TH ST E	CL 36640

QUAD-YEAR	ELEV	DESCRIPTION (INCLUDE QUAD AND YEAR IN DESCRIPTION)	BM NUMBER
LANCASTR (1975)	2404.541	CSBM MON FL 42FT N & 168FT W C/L INT 10TH ST W & AVE K MKD (BM 105-6 1958)	CL 3709
LANCASTR (1975)	2327.319	LACS MON FL @ C/L INT AVE B-8 & 30TH ST W MKD (1/4 COR 7, 8, T8N, R12W, RE5869) 53FT E/O CTR OF PAVING	CL 3710
LANCASTR (1975)	2329.247	LACS MON IN WELL 18IN DN @ C/L INT AVE B & 30TH ST W MKD (SEC COR 5, 6, 7, 8, T8N, R12W, RE5869)	CL 3711
LANCASTR (1975)	2355.361	LACS MON IN WELL 6IN DN @ C/L INT 60TH ST W & PROP AVE E-8 MKD (1/4 COR 27, 26, T8N, R13W RE5869 )	CL 3712
LANCASTR (1975)	2375.885	LACS MON IN WELL 8IN DN @ C/L INT 60TH ST W & AVE D-8 MKD(1/4 COR 22, 23, R13W, T8N, RE5869)	CL 3713
LANCASTR (1975)	2470.493	2IN IP W/CS TAG 4IN UP 50FT S & 50FT E C/L INT 70TH ST E & FUT AVE L USE S EDGE	CL 3714
LANCASTR (1975)	2335.042	LACS MON IN WELL 8IN DN @ C/L INT 70TH ST E & FUT AVE E-8 MKD (1/4 COR 25 26 T8N R11W RE 5869)USE E EDGE	CL 3717C
LANCASTR (1975)	2336.043	CHIS X ON E EDGE 2IN IP W/CONC PLUG & CS TAG 6IN UP 33FT S & 34FT W C/L INT 70TH ST E & AVE E-8	CL 3718C
LANCASTR (1975)	2352.290	CHIS X ON N EDGE 2IN IP W/CONC PLUG & CS TAG 4IN UP 25FT N & 25FT E C/L INT 70TH ST E & AVE F-8	CL 3719C
LANCASTR (1975)	2357.292	CS MON IN WELL 19IN DN @ C/L INT 70TH ST E & AVE G MKD (1 2 35 36 T7N T8N R11W) N EDGE	CL 3721C
LANCASTR (1975)	2358.345	CHIS X ON E EDGE 2IN IP W/CONC PLUG & CS TAG 5IN UP 38FT S & 38FT W C/L INT 70TH ST E & AVE G	CL 3722C
LANCASTR (1975)	2367.219	CHIZ X ON N EDGE 2IN IP W/CONC PLUG & CE TAG 50FT S & 50FT W C/L INT 70TH ST E & AVE G-8	CL 3724C
LANCASTR (1975)	2378.522	L & LACS TAG IN SW COR OF CONC WK 53FT N & 51FT E C/L INT 70TH ST E & AVE H	CL 3725C
LANCASTR (1975)	2376.370	LA CS MON IN WELL 17IN DN @ C/L INT 70TH ST E & AVE H MKD (CO SUR 11 12 2 1 T7N R11W) W EDGE	CL 3726C
LANCASTR (1975)	2388.419	LACS MON IN WELL 6IN DN @ C/L INT 70TH ST E & AVE H-8 MKD(1/4 COR 11 12 T7N R11W) USE W EDGE	CL 3727C
LANCASTR (1975)	2389.778	L & T IN S SIDE OF BOTTOM CONC STEP TO FRONT ENT OF CHURCH 101FT S & 101FT E C/L INT 70TH ST E & AVE H-8	CL 3728C

QUAD-YEAR	ELEV	DESCRIPTION (INCLUDE QUAD AND YEAR IN DESCRIPTION)	BM NUMBER
LANCASTR (1975)	2402.197	LACS MON IN WELL 9IN DN @ C/L INT AVE F & 85TH ST W MKD(1/4 COR 29/32 T8N R13W) USE E EDGE	CL 3729
LANCASTR (1975)	2355.296	CS MON IN WELL 18IN DN @ C/L INT AVE G & 65TH ST E MKD (CO SUR 1/4 SEC COR 24 25 T7N T8N R11W) S EDGE	CL 3730C
LANCASTR (1975)	2355.799	RDBM MON IN WELL 30FT S & 15FT W C/L INT AVE G & 65TH ST E MKD (1972)	CL 3731C
LANCASTR (1975)	2362.353	CHIS X IN E EDGE 2IN IP W/CS TAG 2IN UP 50FT N & 50FT W C/L INT AVE G & 75TH ST E	CL 3732C
LANCASTR (1975)	2361.523	RDBM MON IN WELL 65FT N & 15FT W C/L INT AVE G & 75TH ST E 10FT S PP NO 1354798E MKD (1972)	CL 3733D
LANCASTR (1975)	2366.684	CS MON IN WELL 12IN DN @ C/L INT AVE G & FUT 80TH ST E MKD (CO SUR 1 6 31 36 T7N T8N R10W R11W) S EDGE	CL 3734D
LANCASTR (1975)	2366.272	1.5IN IP W/BR 14IN DN 50FT S & 50FT E C/L INT AVE G & FUT 80TH ST E	CL 3735D
LANCASTR (1975)	2369.999	CS MON IN WELL 14IN DN @ C/L INT AVE G & FUT 85TH ST E MKD (CO SUR 1/4 SEC COR 1 36 T7N T8N R10W) N EDGE	CL 3736D
LANCASTR (1975)	2371.681	2IN IP W/CS TAG 2IN UP 50FT S & 50FT E C/L INT AVE G & 85TH ST E USE N EDGE	CL 3737D
LANCASTR (1975)	2357.214	RDBM TAG IN NW COR CONC BLOCK ON NE COR 50TH ST E & AVE G-8 40FT N & 65FT E C/L INT	CL 3738D
LANCASTR (1975)	2357.141	LACS BM MON 4IN UP 65FT S & 30FT E C/L INT 50TH ST E & AVE G-8 MKD(BM 120-13 1961)	CL 3739D
LANCASTR (1975)	2364.748	LACS MON 9IN DN @ C/L INT 50TH ST E & AVE H MKD(4-3/9-10 T7N R11W) USE W EDGE	CL 3740D
LANCASTR (1975)	2366.469	USC&GS MON 6IN DN 27FT S & 33FT E/O C/L INT 50TH ST E & AVE H MKD (H-1154 1961)	CL 3741D
LANCASTR (1975)	2377.081	LACS BM MON FL 38FT N & 25FT W C/L INT 50TH ST E & AVE H-8 MKD(BM 120-11 1961)	CL 3742D
LANCASTR (1975)	2376.267	LACS MON 12IN DN @ C/L INT 50TH ST E & AVE H-8 MKD (1/4 COR 9 10 T7N R11W)USE S EDGE	CL 3743D
LANCASTR (1975)	2859.969	1.5IN IP W/CONC PLUG & BR 10IN DN @ BC 37FT N/O JOHNSON RD & 218FT W C/L PROD 110TH ST W 94FT E PP NO 1897439E USE S EDGE	CL 4055

QUAD-YEAR	ELEV	DESCRIPTION (INCLUDE QUAD AND YEAR IN DESCRIPTION)	BM NUMBER
BASELINE (1973)	2901.016	USC&GS MON FL ON JOHNSON RD 0.25MI W/O 110TH ST W 29FT S/O C/L MKD (V 1044 1960)	CL 4198
BASELINE (1973)	2766.366	RD MON IN HH 21FT S & 28FT E/O FUT INT AVE L & 100TH ST W.	CL 4199
BASELINE (1973)	2963.128	SCDWR MON N/W COR BRIDGE 333.76-90W OVER CALIF AQUEDUCT 420FT N & 165FT E/O C/L AVE M & 90TH ST W MKD (STATE OF CALIF DEPT OF WATER RESORCES- 333.8A 1971)	CL 4200
BASELINE (1973)	2563.869	L&BR CONC CB 2FT W/O BCR @ N/W COR AVE M & 65TH ST W 40FT N & 70FT W/O C/L INT	CL 4201
BASELINE (1973)	2513.135	L&T CONC CB 2FT N/O BCR @ N/E COR AVE M & 60TH ST W 80FT N & 40FT E/O C/L INT	CL 4202
BASELINE (1973)	2523.216	SPK IN CONC CB 2FT W/O BCR & N/E COR AVE M & 10TH ST W 42FT N & 75FT E/O C/L INT	CL 4203
BASELINE (1973)	2479.424	L&BR IN CONC FTG OF 4FT BARBWIRE FN ON S/W COR AVE M & 50TH ST E. 50FT W & 40FT S/O C/L INT	CL 4204
BASELINE (1973)	2482.972	CS MON UP 4IN ON C/L INT AVE M & 55TH ST E MKD (1/4 SEC COR 34-3 T7N T6N R11W) 5FT S/O W.P. UP	CL 4205
BASELINE (1973)	2529.993	L&RD TAG S/E COR AVE M & SIERRA HWY 42FT S & 81 FT E/O C/L INT 1FT E/O BCR	CL 4218
BASELINE (1973)	2529.343	USC&GS MON IN W END CULV NO 013, 272FT E/O C/L SIERRA HWY & 50FT S/O AVE M MKD (S 12-19 1971)	CL 4219
LANCASTR (1975)	2498.155	1 1/2IN IP CONC PL & BR, 12IN DN, @ SE COR 110TH ST W & AVE I, 45FT S & 52FT E C/L INT	CL 4353
LANCASTR (1975)	2456.356	RDBM MON IN WELL 8IN DN, 149FT E & 34FT N C/L INT AVE I & 100TH ST W MKD ((BM 1974)	CL 4354
LANCASTR (1975)	2335.617	CS MON IN WELL 11IN DN @ C/L INT AVE I & 50TH ST W MKD (11 12 13 14 T7N R13W RE 5869) USE S EDGE	CL 4355
LANCASTR (1975)	2325.226	RDBM MON IN WELL 6IN DN, 167FT E & 48FT N C/L INT AVE I & 40TH ST W MKD ( BM 1974)	CL 4357
LANCASTR (1975)	2676.152	RDBM MON DN 6IN IN WELL MKD (BM 1974) 50FT N & 60FT E/O C/L INT AVE K & 110TH ST W 2FT N/O WITNESS POST	CL 4358

QUAD-YEAR	ELEV	DESCRIPTION (INCLUDE QUAD AND YEAR IN DESCRIPTION)	BM NUMBER
LANCASTR (1975)	2399.299	RDBM MON DN 6IN IN WELL MKD (BM 1974) 50FT S & 50FT E/O C/L INT 80TH ST W & AVE K 2FT S/O WITNESS POST	CL 4359
LANCASTR (1975)	2473.298	CALIF DIV HWYS N & TAG IN T BAR FL. 0.5MI E & 30FT S/O C/L INT AVE D & 110TH ST W 35FT W/O S LY DIRT RD.	CL 4365
LANCASTR (1975)	2473.202	CALIF DIV HWYS N & TAG IN T BAR FL 0.5 MI E & 30 FT S/O C/L INT AVE D & 110TH ST W 30FT E/O S LY DIRT RD.	CL 4366
LANCASTR (1975)	2354.457	RDBM MON DN 5IN IN WELL 61FT S/O C/L AVE D & 43FT E/O C/L 45TH ST W, 111FT SE OF PP 1450334E 87 FT SW PP 1450333 E	CL 4367
LANCASTR (1975)	2473.192	2IN IP CONC PLUG & CS TAG 4IN UP @ NW COR AVE J & 100TH ST W 40FT N & 40FT W/O C/L INT	CL 4368
LANCASTR (1975)	2456.801	2IN IP CON PLUG & CS TAG 3IN UP @ SW COR AVE I-8 & 100TH ST W 50FT S & 50FT W/O C/L INT	CL 4369
LANCASTR (1975)	2493.619	2IN IP CON PLUG & CS TAG 5IN UP 50FT S & 50FT E/O C/L INT 110 TH ST W & AVE G USE PM IN E EDGE	CL 4370
LANCASTR (1975)	2442.191	LACS TAG IN CONC BASE STANDPIPE 64FT N & 11FT W C/L INT AVE G & PROP 95TH ST W	CL 4371
LANCASTR (1975)	2364.444	CHIS X IN 2IN IP WOOD PLUG & N 3IN UP 30FT N C/L INT AVE G & 65TH ST W	CL 4372
LANCASTR (1975)	2338.495	2IN IP CONC PLUG & LACS TAG 2IN UP, 50FT N & 50 FT W C/L INT AVE F & 50TH ST W	CL 4373
LANCASTR (1975)	2335.267	RDBM TAG IN N EDGE WK @ SW COR BRIDGE OVER ANTELOPE VALLEY FRWY, 18FT S C/L AVE F	CL 4374
LANCASTR (1975)	2308.344	CS MON IN WELL 9IN DN @ C/L INT AVE F & 20TH ST W MKD (29, 28, 32, 33, T8N, R12W, RE5869)	CL 4375
LANCASTR (1975)	2444.063	2IN IP UP 2IN CONC PLUG & LA CO ENG TAG 50FT S & 50FT E/O C/L INT 90TH ST W & AVE C-8	CL 4376
LANCASTR (1975)	2444.593	2IN IP FL, CONC PLUG & LA CO ENG TAG 50FT N & 50 FT W/O C/L INT 90TH ST W & AVE C-8	CL 4377
LANCASTR (1975)	2443.372	2IN IP UP 3IN CONC PLUG & LA CO ENG TAG 50FT N & 50FT W/O C/L INT 90TH ST W & AVE C	CL 4378
LANCASTR (1975)	2470.234	L&T IN 14IN DIAM CONC BASE TO VENT PIPE 36FT N & 45FT E/O C/L INT 80TH ST W & AVE D-8	CL 4379

QUAD-YEAR	ELEV	DESCRIPTION (INCLUDE QUAD AND YEAR IN DESCRIPTION)	BM NUMBER
LANCASTR (1975)	2644.046	CS MON FL @ C/L INT 90TH ST W & AVE L MKD (29, 30, 31, 32, T7N, R13W, RE7078)	CL 4380
LANCASTR (1975)	2539.004	2IN IP CONC PL & CS TAG FL @ NE COR 90TH ST W & AVE K-8, 50FT N & 63FT E/O C/L INT (USE X IN N EDGE ) IP LNING S LY	CL 4381
LANCASTR (1975)	2307.401	CS MON IN WELL 10IN DN ON C/L AVE A, 0.1 MI W/O SIERRA HWY MKD (1/4 COR 33, 4, T8N, T9N, R12W RE5869, 1965)	CL 4382
LANCASTR (1975)	2354.978	RDBM MON IN WELL 11IN DN 55FT N & 55FT E/O C/L INT AVE E-8 PROP & 60TH ST W MKD (LA CO RD DEPT BM 1974) 2IN IP WITNESS POST 2FT E	CL 4384
LANCASTR (1975)	2459.548	L&T NR BCR @ NE COR 50TH ST W & AVE L-8, 68FT N & 42FT E C/L INT	CL 4385
LANCASTR (1975)	2435.095	RD BM TAG IN NW COR CONC SLAB @ SW COR AVE L & 50TH ST W, 52 FT S & 105 FT W C/L INT (LEAD MKD 74)	CL 4386
LANCASTR (1975)	2437.981	RD BM TAG NW COR CONC SLAB 62 FT S & 259 FT E C/L INT AVE L & 50TH ST W (LEAD MKD 74)	CL 4387
LANCASTR (1975)	2413.059	L&T IN FOOTING FENCE COR @ SE COR 50TH ST W & AVE K-8, 30FT S & 50FT E C/L INT	CL 4388
LANCASTR (1975)	2348.878	RD BM TAG IN FTG FENCE COR ON NW COR AVE J & 50TH ST W 38FT N & 60FT W C/L INT (LEAD MKD 74)	CL 4389
LANCASTR (1975)	2339.740	CS MON IN WELL 6IN DN @ C/L INT 50TH ST W & FUT AVE I-8 MKD (1/4 COR 13, 14, T7N, R13W, RE5869)	CL 4390
LANCASTR (1975)	2433.690	RD BM TAG 1FT W BCR @ NW COR AVE L & 35TH ST W 42FT N & 67FT W C/L INT	CL 4391
LANCASTR (1975)	2428.456	L&T 1FT S BCR @ SE COR AVE L & 45TH ST W 79FT S & 32FT E/O C/L INT	CL 4392
LANCASTR (1975)	2343.796	2 IN IP CONC PLUG & CS TAG 4IN UP @ NE COR AVE J & 40TH ST W 50FT N & 50FT E C/L INT	CL 4393
LANCASTR (1975)	2329.835	1 1/2 IN IP CONC PLUG & BRAD 2IN DN @ SW COR 40TH ST W & AVE I-8, 60FT S & 60FT W/O C/L INT	CL 4394
LANCASTR (1975)	2327.969	1 1/2IN IP CONC PLUG & BRAD 9IN DN @ NE COR 40TH ST W & AVE I-8, 63FT N & 63FT E/O C/L INT	CL 4395
LANCASTR (1975)	2326.371	1 1/2 IN IP CONC PLUG & BR 8IN DN 60FT N & 60FT E/O C/L INT 30TH ST W & FUT AVE A-8	CL 4396

QUAD-YEAR	ELEV	DESCRIPTION (INCLUDE QUAD AND YEAR IN DESCRIPTION)	BM	NUMBER
LANCASTR (1975)	2330.110	2IN IP CONC PLUG & CS TAG IN WELL 12IN DN 24FT E/O C/L INT AVE B & 30TH ST W (TO THE S)	CL	4397
LANCASTR (1975)	2328.140	2IN IP CONC PLUG & CE TAG UP 6IN, 50FT S & 40FT E/O C/L INT 30TH ST W & AVE B-8 93FT E/O CTR OF PAVING	CL	4398
LANCASTR (1975)	2324.952	CS MON 14IN DN 20FT E/O CTR PAVING ON 30TH ST W ON C/L FUT AVE C-8 MKD (CO SUR 1/4 COR 13- 17, T8N, R12W, RE 329)	CL	4399
LANCASTR (1975)	2315.421	1 1/2 IN IP CONC PL & BR DN 12IN 51FT S & 51FT W/O C/L INT AVE E & 30 TH ST W	CL	4400
LANCASTR (1975)	2317.575	CS MON IN WELL 8IN DN @ C/L INT 30TH ST W & AVE F-8 MKD (1/4 COR 31, 32, T8N, R12W, RE5869)	CL	4401
LANCASTR (1975)	2317.983	CS MON IN WELL 7IN DN @ C/L INT 30TH ST W & AVE G MKD (5, 6, 31, 32, T7N, T8N, R12W, RE5869)	CL	4402
LANCASTR (1975)	2313.449	CS MON IN WELL 6IN DN @ C/L INT 30TH ST W & AVE H-8 MKD (1/4 COR 7, 8, T7N, R12W, RE 7028)	CL	4403
LANCASTR (1975)	2313.318	2IN IP CONC PLUG & CS TAG 3IN UP @ SE COR 30TH ST W & AVE H-8 (USE CH X)	CL	4404
LANCASTR (1975)	2354.127	RD BM MON IN WELL 32 FT N & 187 FT E/O C/L INT AVE J & 60TH ST W MKD (1974)	CL	4405
LANCASTR (1975)	2353.807	2IN IP CONC PLUG & CS TAG UP 5IN @ SW COR AVE J & 55TH ST W (FUT) 50FT S & 50FT W/O C/L INT (USE X IN SE EDGE)	CL	4406
LANCASTR (1975)	2348.588	2IN IP WD PLUG & N 4IN UP 30FT N & 30FT W/O C/L INT AVE J & 45TH ST W (TO THE N)	CL	4407
LANCASTR (1975)	2304.207	USC & GS MON 91FT E/O C/L SIERRA HWY & 1450FT S/O AVE F MKD (Y-56 RESET 1971)	CL	4408
LANCASTR (1975)	2326.158	CS MON IN WELL 8IN DN @ C/L INT AVE G & 5TH ST E MKD (1/4 COR 35 2 T7N T8N R12W RE 7078)	CL	4409
LANCASTR (1975)	2329.529	CS MON IN WELL 10IN DN @ C/L INT AVE G & 10TH ST E MKD (35 36 2 1 T7N T8N R12W RE 5869)	CL	4410
LANCASTR (1975)	2295.568	CS MON IN WELL 7IN DN @ C/L INT AVE E & DIVISION ST MKD (22 23 26 27 T8N R12W RE 7078)	CL	4411
LANCASTR (1975)	2321.793	RD BM MON IN WELL 5IN DN 28FT S & 290FT E/O C/L INT AVE E & 55TH ST E MKD (1974)	CL	4412D

QUAD-YEAR	ELEV	DESCRIPTION (INCLUDE QUAD AND YEAR IN DESCRIPTION)	BM NUMBER
LANCASTR (1975)	2320.804	1 1/2 IN IP CONC PLUG & NAIL (PT UP) UP 6IN 50 FT N & 50FT W/O C/L INT AVE E-8 & 30TH ST E	CL 4413
LANCASTR (1975)	2362.381	2 1/2 IN IP CONC PL & NAIL 2PT UP 1IN UP 50FT S & 50FT W/O C/L INT 30TH ST E & AVE H (USE NAIL)	CL 4414
LANCASTR (1975)	2379.045	L&T 1FT N/O BCR @ NE COR 30TH ST E & AVE I 78FT N & 42FT E/O C/L INT	CL 4415
LANCASTR (1975)	2379.155	L&T 1FT E/O BCR @ N/E COR 30TH ST E & AVE I 42FT N & 78FT E/O C/L INT	CL 4416
LANCASTR (1975)	2801.430	CS BM 6IN UP 0.5 MI S & 61FT W C/L INT 110TH ST W & AVE K 5FT W/O PP 503791E MKD (119-28A 1972)	CL 4417
LANCASTR (1975)	2785.219	CALIF DIV OF HWY MON 4IN UP 0.35 MI S & 53FT W C/L INT 110TH ST W & AVE K MKD (DEL SUR G10 1972)	CL 4418
LANCASTR (1975)	2584.919	CS BM MON 4IN UP 64FT S & 58FT W C/L INT 110TH ST W & AVE J-8 MKD (119-26A 1972)	CL 4419
LANCASTR (1975)	2504.863	CS BM 4IN UP 348FT S & 56FT E C/L INT 110TH ST W & AVE I-8 MKD (119-24A)	CL 4420
LANCASTR (1975)	2489.677	1 1/2 IP CONC PL & BRAD 6IN DN 53FT W C/L INT 110TH ST W & AVE F-8 USE NW EDGE	CL 4421
LANCASTR (1975)	2485.707	CS MON IN WELL 10IN DN @ C/L INT 110TH ST W & AVE D-8 MKD (1/4 COR 23 24 T8N R14W RE 7078) USE NE EDGE	CL 4422
LANCASTR (1975)	2485.246	RDBM MON IN WELL 4IN DN 170FT N & 41FT W C/L INT 110TH ST W & AVE B-8 MKD 1974	CL 4423
LANCASTR (1975)	2416.178	L&T IN W CB 20TH ST W 65FT S & 42FT W C/L INT AVE K-8	CL 4424
LANCASTR (1975)	2363.527	LACS MON @ C/L INT AVE I & 15TH ST E MKD ( 1/4 COR T7N R12W 12 13 RE 5869) 12IN DN	CL 4425A
LANCASTR (1975)	2371.903	RDBM MON 52FT E/O & 52FT S/O C/L INT AVE I & 20TH ST E MKD (1974)	CL 4426
LANCASTR (1975)	2436.338	RDBM MON IN WELL 4IN DN 83FT N & 28FT W C/L INT AVE A-8 & 90TH ST W	CL 4427C
LANCASTR (1975)	2384.383	2IN IP CONC PL & NAIL 8IN UP 40FT N & 40FT W/O C/L INT AVE C-8 & 60TH ST W	CL 4428
LANCASTR (1975)	2381.740	CS MON @ C/L INT AVE C & 60TH ST W IN WELL MKD ( T8N R13W 10 11 15 14 RE 329)	CL 4429



QUAD-YEAR	ELEV	DESCRIPTION (INCLUDE QUAD AND YEAR IN DESCRIPTION)	BM NUMBER
LANCASTR (1975)	2382.394	CS MON IN WELL @ C/L INT 60TH ST W & AVE B-8 MKD (T8N R13W 20 21 1/4 SEC COR 1928) USE E EDGE	CL 4430A
LANCASTR (1975)	2344.130	L&T 1FT W BCR @ NW COR 20TH ST W & AVE J 40FT N & 79FT W C/L INT	CL 4431A
LANCASTR (1975)	2344.471	RD BM TAG 1FT E BCR @ SE COR 20TH ST W & AVE J 40FT S & 76FT E C/L INT (LEAD MKD 74)	CL 4432
LANCASTR (1975)	2354.250	L&T IN S CB AVE J ON C/L PROD 12TH ST W 42FT S C/L INT	CL 4433D
LANCASTR (1975)	2391.016	CS TAG 2FT W BCR @ NW COR AVE J & 5TH ST E 40FT N & 63FT W C/L INT	CL 4434D
LANCASTR (1975)	2396.258	L&T IN S CB AVE J C/L PROD HAMSTEAD AVE 42FT S C/L INT	CL 4435D
LANCASTR (1975)	2358.638	L&T @ MCR NW COR 20TH ST W & AVE J-8 58FT N & 56FT W C/L INT	CL 4436
LANCASTR (1975)	2411.613	RD BM TAG @ MCR SW COR 30TH ST W & AVE K-8 44FT S & 52FT W C/L INT (LEAD MKD 74)	CL 4437
LANCASTR (1975)	2410.468	CS MON 8IN DN IN WELL @ C/L INT 30TH ST W & AVE K-8 MKD (1/4 COR 29 30 T7N R12W RE 7078) S EDGE	CL 4438
LANCASTR (1975)	2387.868	L&T @ MCR NE COR 30TH ST W & AVE K 50FT N & 54FT E C/L INT	CL 4439
LANCASTR (1975)	2391.255	L&T 1FT W BCR @ NE COR AVE K & 17TH ST W 42FT N & 37FT E C/L INT	CL 4440A
LANCASTR (1975)	2394.592	RD BM TAG 1FT W BCR @ SW COR AVE K & 15TH ST W 42FT S & 68FT W C/L INT (LEAD MKD 74)	CL 4441
LANCASTR (1975)	2395.035	RD BM TAG 1FT E BCR @ NE COR AVE K & 15TH ST W 42FT N & 68FT E C/L INT (LEAD MKD 74)	CL 4442
LANCASTR (1975)	2359.936	L&T N CB 42FT N & 80FT E/O C/L INT AVE I & 10TH ST E	CL 4443D
LANCASTR (1975)	2344.163	RDBM TAG IN E CB 40FT S/O SE BCR 105FT S & 42FT E C/L INT 10TH ST W & LANCASTER BLVD (LEAD MKD 74)	CL 4445D
LANCASTR (1975)	2334.377	RD BM TAG @ MCR NE COR 10TH ST W & JACKMAN ST 30FT N & 49FT E C/L INT (LEAD MKD 74)	CL 4447D
LANCASTR (1975)	2366.613	L&T CONC CB 51FT S & 27FT W/O C/L INT SIERRA HWY & OLDFIELD ST (16FT S/O BCR)	CL 4448D

QUAD-YEAR	ELEV	DESCRIPTION (INCLUDE QUAD AND YEAR IN DESCRIPTION)	BM NUMBER
LANCASTR (1975)	2366.335	L&T CONC CB 17FT S & 28FT E/O C/L INT SIERRA HWY & OLDFIELD ST (16FT S/G BER)	CL 44490
LANCASTR (1975)	2345.756	L& BRAD CONC CB 30FT E & 25FT S C/L INT SIERRA HWY & KETTERING ST	CL 44500
LANCASTR (1975)	2340.408	L&T E EDGE GUTTER 30FT E C/L SIERRA HWY ON C/L PROD JACKMAN ST	CL 44510
LANCASTR (1975)	2355.835	L&BRAD @ MCR OF NW COR SIERRA HWY & MILLING ST 26FT N & 34FT W C/L INT	CL 44520
LANCASTR (1975)	2356.430	L&T WK 24FT N & 38FT E C/L INT SIERRA HWY & MILLING ST	CL 44530
LANCASTR (1975)	2317.659	RDBM TAG NR N END CONC HDWL 25FT E/O C/L SIERRA HWY & 0.3MI S/O AVE G	CL 44550
LANCASTR (1975)	2365.516	L&T IN BOTTOM STEP TO HSE # 108 @ SW COR DIVISION ST & NEWGROVE ST 24FT S & 114FT W/O C/L INT MKD (BM)	CL 44590
LANCASTR (1975)	2313.975	CS MON IN WELL 10IN DN @ C/L INT DIVISION ST & AVE F-8 MKD (1/4 COR 34 35 T8N R12W RE 5869)	CL 4460
LANCASTR (1975)	2305.809	RD BM MON IN WELL 5IN DN 220FT N & 32FT W C/L INT DIVISION ST & AVE F MKD (1974)	CL 4461
LANCASTR (1975)	2302.380	2IN IP CONC PL & CS TAG 5IN UP 50FT S & 50FT W C/L INT DIVISION ST & AVE E-8	CL 4462
LANCASTR (1975)	2350.246	CS MON IN WELL 9IN DN @ C/L INT AVE F & 85TH ST E MKD (30 31 T8N R10W RE 5869) W EDGE	CL 44640
BASELINE (1975)	2477.425	RD MON IN WELL 50FT N & 50FT E C/L INT 50TH ST E & AVE M	CL 4465
LANCASTR (1975)	2445.997	RDBM TAG @ 48IN DIAM CONC BASE OF BREATHER PIPE 67FT N & 124FT W C/L INT 50TH ST E & AVE K-8	CL 44660
LANCASTR (1975)	2344.354	RD BM TAG IN PARKING LOT CB 161FT N & 72FT W C/L INT 60TH ST E & AVE F-8 LEAD MKD (74)	CL 44670
LANCASTR (1975)	2459.654	RD BM TAG IN FTG FENCE COR 690FT S & 41FT W C/L INT 30TH ST E & AVE L-8 MKD (74)	CL 4469
LANCASTR (1975)	2419.903	LA CC CONTROL SYSTEM MON FL 33FT N & 60FT W C/L INT AVE K & 30TH ST E MKD (LANCASTER EAST 1972 RM2 RE 7078)	CL 44700

QUAD-YEAR	ELEV	DESCRIPTION (INCLUDE QUAD AND YEAR IN DESCRIPTION)	BM NUMBER
LANCASTR (1975)	2443.463	CS MON FL 43FT N & 42FT E C/L INT AVE K & 70TH ST E MKD (LA CO CONTROL MON LANCASTER EAST RM 1 1972 RE 7078)	CL 4471D
LANCASTR (1975)	2473.881	RD MON IN WELL 31FT N & 91FT W C/L INT 90TH ST E & AVE K MKD (1974)	CL 4472A
LANCASTR (1975)	2384.298	L&BN IN CONC WELL BASE 190FT E/O & 78FT N/O C/L INT AVE I & 35TH ST E MKD (74)	CL 4473D
LANCASTR (1975)	2392.801	RD BM MON IN WELL DN 8IN 50FT E & 34FT N INT AVE I & 55TH ST E 2IN IP MARKER 2FT N MKD (1974)	CL 4474D
LANCASTR (1975)	2469.492	RDBM MON IN WELL 372FT N & 35FT W/O C/L INT 70TH ST E & AVE L MKD (1974)	CL 4475A
LANCASTR (1975)	2365.916	RD BM MON IN WELL 184FT N & 30FT W C/L INT 70TH ST E & AVE G-8 MKD (1974)	CL 4476D
LANCASTR (1975)	2350.895	RDBM MON IN WELL 24FT N & 31FT W C/L INT 70TH ST E & AVE F-8 MKD (1974)	CL 4477D
LANCASTR (1975)	2524.177	RDBM MON IN WELL 333FT N & 36FT E C/L INT AVE M & 90TH ST E MKD (1974)	CL 4479
LANCASTR (1975)	2498.624	RDBM MON IN WELL 212FT N & 35FT E C/L INT AVE L & 90TH ST E MKD (1974)	CL 4480
LANCASTR (1975)	2453.767	RDBM MON IN WELL 204FT N & 34FT W C/L INT 90TH ST E & AVE J-8 MKD (1974)	CL 4481D
LANCASTR (1975)	2459.803	2IN IP CONC PL & N 4IN UP 40FT E C/L INT 100TH ST W & AVE H-8	CL 4482
LANCASTR (1975)	2456.752	CS MON 12IN DN @ C/L INT 100TH ST W & AVE H-8 MKD (CO SURV 1/4 SEC COR 7 12 T7N R13W R14W)	CL 4483
LANCASTR (1975)	2458.467	CS MON 14IN DN @ C/L INT 100TH ST W & AVE H MKD (CO SURV 1 6 12 7 T7N R13 W R14W)	CL 4484
LANCASTR (1975)	2464.832	2IN IP WOOD PL & N 6IN UP 40FT N & 40FT W C/L INT 100TH ST W & AVE H	CL 4485
LANCASTR (1975)	2462.873	CS TAG IN CONC COLLAR STAND PIPE 32FT S & 33FT E C/L INT 100TH ST W & AVE G-8	CL 4486
LANCASTR (1975)	2459.507	CS MON 10IN DN @ C/L INT 100TH ST W & AVE G-8 MKD (CO SURV 1/4 COR 1 6 T7N R13W R14W RE 62)	CL 4487
LANCASTR (1975)	2460.743	CSBM MON 4IN UP ON SW COR AVE A & 100TH ST W 36FT W & 28FT S/O C/L INT MKD (BM 117-18A 1976)	CL 4546D

QUAD-YEAR	ELEV	DESCRIPTION (INCLUDE QUAD AND YEAR IN DESCRIPTION)	BM NUMBER
LANCASTR (1975)	2386.407	CS MON DN 7IN @ C/L INT AVE B & 65TH ST W MKD (3 10 T8N R13W) USE S EDGE	CL 45470
LANCASTR (1975)	2330.296	USC&GS MON IN S CB 48FT E/O BCR 38FT S & 128FT E/O C/L INT AVE I & 10TH ST W MKD (W 1219 1971)	CL 45480
LANCASTR (1975)	2360.749	RDBM TAG S CB 42FT S/O C/L AVE J & 106FT E/O C/L 10TH ST W @ SE COR AVE J & 10TH ST W	CL 45490
LANCASTR (1975)	2372.482	RDBM TAG IN S CB OLDFIELD ST 2FT W BCR @ SW COR DIVISION ST & OLDFIELD ST 20FT S & 70FT W/O C/L INT	CL 45500
LANCASTR (1975)	2422.619	RDBM TAG IN N CB @ BCR OF NW COR DIVISION ST & AVE K 42FT N & 74FT W/O C/L INT	CL 4551A
LANCASTR (1975)	2368.371	RD MON IN WELL ON W SIDE 30TH ST E @ SE COR RD BARROW PIT 54FT W & 25FT S/O C/L INT AVE H-8 TO E & 30TH ST E	CL 45700
LANCASTR (1975)	2347.518	RDBM MON IN WELL @ SE COR AVE F & 80TH ST E PROP 47FT E & 46FT S/O C/L INT MKD (1977)	CL 45710